



WHO / UNICEF

**Joint Monitoring Programme
for Water Supply and Sanitation**

Coverage Estimates

Improved Drinking Water

Updated in June 2006

Benin

Urban and Rural Wa

DHS	###	
WATER	Urban	Rural
Eau courante dans le logement	18,6	0,5
Eau courante ailleurs	37,8	6,5
Robinet public	2,3	8,1
Forage/pompe	4,8	21,9
Puits protégé	7,5	9,4
Puits non-protégé	21,5	21,3
Source	0	0,2
Rivière/Mare/Marigot	4,3	21,8
Eau de pluie citerne	2,8	8
Autre eau de pluie	0,2	2,1
Autre	0	0
ND	0,1	0,1
Total	100	100
ratio protected wells/ all wells	0,26	0,31
Access to improved drinking water sources	74%	57%
% House connections	19%	1%

Benin DHS 1996, page 18

DHS	2001	
WATER	Urban	Rural
Eau courante dans le logement	26,9	1,6
Eau courante ailleurs	35,7	10,4
Robinet public	4,9	18,1
Forage	4,9	16
Puit protégé	5	5,5
Eau de pluie dans la citerne	0,5	7,7
Autre eau de pluie	0,2	0,3
Puit non protégé	16,6	24,2
Source	0	2,5
Rivière	5,2	13,7
Camion citerne	0	0,1
TOTAL	99,9	100,1
Ratio of protected wells		
All Wells		
Estimation of protected wells		
Access to improved drinking water sources	78%	60%
% House connections	27%	2%

Source: Bénin, Enquête Démographique et de Santé, 2001.

CENSUS	2002	
WATER	Urban	Rural
Eau courante	21,6	1,4
Société des eaux, ailleurs (achetée aux revendeurs)	39,8	8,1
Fontaine	1,1	9,2
Pompe village	5,4	22,9
Citerne	0,9	3,6
Puits protégé	7,3	9,1
Puits non-protégé	18,6	25,5
Rivière	4,7	19,5
Autre	0,5	0,8
TOTAL	99,9	100,1
Access to improved drinking water sources	76%	54%
% House connections	22%	1%

Source: Recensement général de la population et des habitations, 2002

Water - Benin

CENSUS 1992	
(Population in thousands)	
WATER	Urban
Private Connection & Shared Tap	353
Public Standpipe	78
Borehole	75
Rainwater	47
Well	382
Surface Water (River & Pond)	162
Other	649
TOTAL URBAN POPULATION	1746
Total Urban Population Served Excl. Well	553
Total Well	382
% of protected wcl estimated 26% on basis of protected/unp ratio DHS96	99
% of Total Urban Population Served Excl. Well	32%
% of Total Urban Population Served Incl. 100% Well	54%
Access to improved drinking water sources	37%
% House connections	20%

Source: 1992 Census as recorded in Global Water Supply and Sanitation Assessment 2000. Water Supply and Sanitation Sector Questionnaire - 1999.

CENSUS 1992	
(Population in thousands)	
WATER	Rural
Private Connection & Shared Tap	31
Public Standpipe	107
Borehole	618
Rainwater	144
Well	1093
Surface Water (River & Pond)	891
Other	272
TOTAL RURAL POPULATION	3156
Total Rural Population Served Excl. Well	900
Total Well	1093
% of protected wcl estimated 24% on basis of protected/unp ratio DHS96	335
% of Total Rural Population Served Excl. Well	29%
% of Total Rural Population Served Incl. 100% Well	63%
Access to improved drinking water sources	39%
% House connections	1%

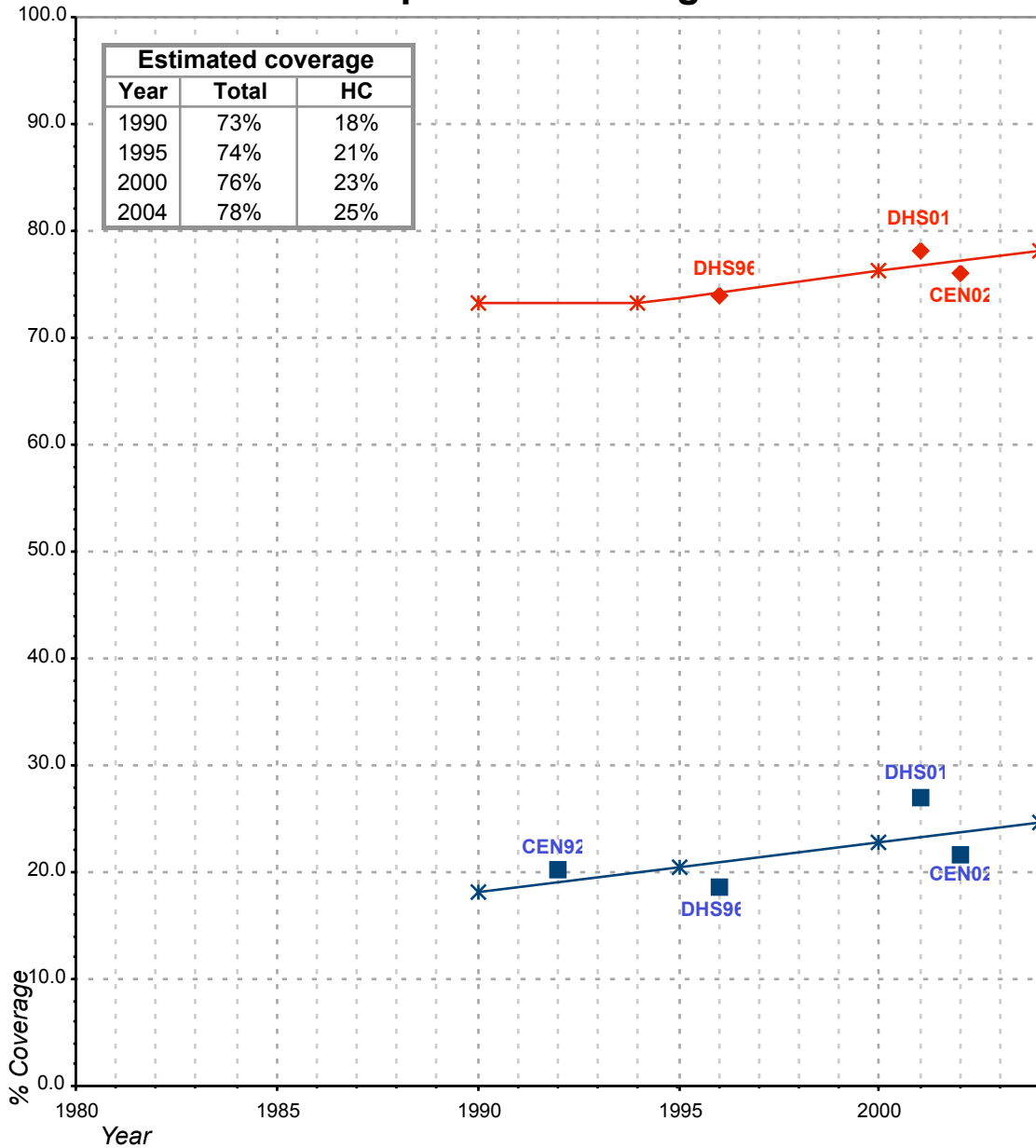
FORM-6/WHO 1999		
(Population in thousands)		
WATER	Urban	Rural
Population served with household connection	1136	0
Population without household connection but with reasonable access to a public water point	0	2000
Total population served	1136	2000
Total population unserved	1202	1848
Total population	2338	3848
Access to improved drinking water sources	49%	52%
% House connections	49%	0%

Source: Global Water Supply and Sanitation Assessment 2000. Water Supply and Sanitation Sector Questionnaire - 1999. (Form 6 sent to WHO)

Large proportion (almost 20%) uses "other" water sources => unclear

Benin			DRINKING WATER							
			URBAN				RURAL			
			HC		Total		HC		Total	
Source	Code	Year	Used for estimates	Not used for estimates	Used for estimates	Not used for estimates	Used for estimates	Not used for estimates	Used for estimates	Not used for estimates
The International Drinking Water Supply and Sanitation Decade. Review of National Baseline Data (as at December 1980). WHO 1984	WHO80	1980		10.0		26.0				15.0
The International Drinking Water Supply and Sanitation Decade. Review of Mid-Decade Progress (as at December 1985). WHO 1987.	WHO85	1985		45.0		80.0				34.0
The International Drinking Water Supply and Sanitation Decade. Review of National Progress (as at December 1988). WHO 1990.	WHO88	1988		56.0		66.0				46.0
The International Drinking Water Supply and Sanitation Decade. End of Decade Review (as at December 1990). WHO1992.	WHO90	1990		40.0		73.0				43.0
1992 census as recorded in the Global Water Supply and Sanitation Assessment 2000. Water Supply and Sanitation Sector Questionnaire - 1999. (Form 4 sent to WHO)	CEN92	1992	20.2			37.3	1.0			39.1
Water Supply and Sanitation Sector Monitoring Report - 1996. Sector Status as of 31 December 1994. WHO/UNICEF 1996.	JMP96	1993				41.0				53.0
Demographic and Health Survey 1996	DHS96	1996	18.6		74.0		0.5		56.5	
Global Water Supply and Sanitation Assessment 2000. Water Supply and Sanitation Sector Questionnaire - 1999. (Form 6 sent to WHO)	JMP99	1999		49.0		49.0		0.0		52.0
Bénin, Enquête Démographique et de Santé, 2001.	DHS01	2001	26.9		78.1		1.6		59.6	
Recensement général de la population et des habitations, 2002	CEN02	2002	21.6		76.1		1.4		54.3	

Benin - urban - Access to improved drinking water sources



Total improved access

Household connections (HC)

◆ Used for estimates

■ Used for estimates

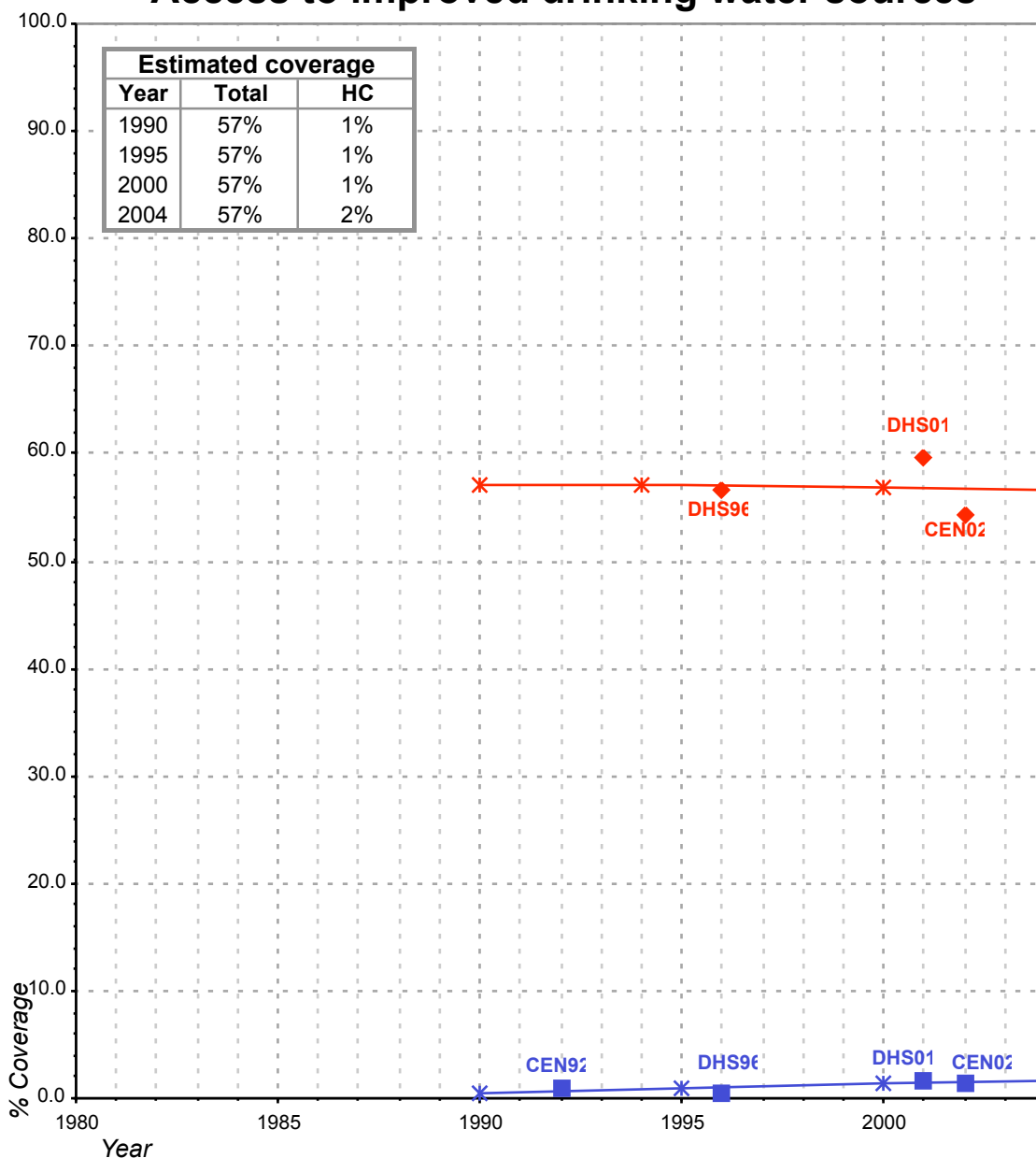
✱ Estimates

✱ Estimates

Total access : The census information of 1992 has not been used because it has a large category (37% the water source is not defined). For this reason the only two surveys available are the DHS which have been used to determine the estimate.

Household connections :

Benin - rural - Access to improved drinking water sources



Total improved access

- ◆ Used for estimates
- ✱ Estimates

Household connections (HC)

- Used for estimates
- ✱ Estimates

Total access : The census information of 1992 has not been used because it has a large category (37% the water source is not defined). For this reason the only two surveys available are the DHS96 and DHS01 which have been used to determine the estimate.

Household connections :