



**WHO / UNICEF**

**Joint Monitoring Programme  
for Water Supply and Sanitation**

Coverage Estimates

**Improved Drinking Water**

Updated in June 2006

---

**Burkina Faso**

---

## Burkina Faso - urban water

Survey								
<b>DHS</b>	<b>1993</b>		<b>MICS</b>	<b>1996</b>		<b>DHS</b>	<b>1999</b>	
	Urban	Rural		Urban	Rural		Urban	Rural
<b>WATER</b>			<b>Water</b>			<b>Water</b>		
Private Tap	26	0,8	Running Water	18,5	0,4	Robinet dans le logement	25	0,1
Public Tap	40,2	4	Standpipe	39	3	Robinet public	47,7	2,0
Public Well*	22,9	89,8	Borehole or Protected Well	8,6	34	Puits traditionnel dans cours*	7,3	4,7
Vendor	8,4	0,2	Unprotected Well	31,2	55,5	Puits traditionnel public*	5,4	46,1
Reservoir/River	1,2	4,8	Pond	0	7,1	Forage {bore hole}	8,2	41,2
Other & Not Defined	1,2	0,4	Tanker, Vendor	2,5	0	Source/riviere/fleuve	0	4,7
			Other	0,2	0	Mare/lac/barrage	0	1,3
						Vendeur d'eau	5,7	0,1
						Autre	0,6	0
<b>TOTAL</b>	<b>100</b>	<b>100</b>	<b>TOTAL</b>	<b>100</b>	<b>100</b>	<b>TOTAL</b>	<b>100</b>	<b>100</b>
All Well	22,9	89,8						
*Estimated protected wells based on urban well ratio of urban MICS96	4,9	34,1	% protected well/ all wells based on the assumption that there are mainly wells in urban areas					
				0,22	0,38			
Improved Drinking Water Excluding Well	66	5				Estimation de source basée sur DHS03		1,2
Improved Drinking Water Including 100% Well & Spring	89	95				Estimation des puits protégés, basée sur MICS96 et DHS03	7,5	45,7
						Estimated 50% of protected springs	0,0	0,6
<b>Access to improved drinking water sources (incl. % Well)</b>	<b>71%</b>	<b>39%</b>	<b>Access to improved drinking water sources</b>	<b>66%</b>	<b>37%</b>	<b>Access to improved drinking water sources</b>	<b>80%</b>	<b>48%</b>
% House connections	26%	1%				% House connections	25%	0%

Source: Burkina-Faso Demographic and Health Survey 1993.

Source: Implementation of Mid-Decade Goals for Burkina-Faso Children by 1996: Analysis and Evaluation, General Statistics Office and Burkina-Faso Committee for Protection and Care of Children. Ouagadougou, 1997.

Source: Burkina-Faso Demographic and Health Survey 1998/9.

DHS 2003			WHS 2003		
WATER	Urban	Rural	WATER	Urban	Rural
Robinet dans le logement	16,9	0	Piped water through house connection or yard	13,1	0,3
Robinet dans la cour	15,7	0	Public standpipe	64,0	23,1
Fontaine publique	56	3,9	Protected tube well or bore hole	4,7	28,1
Puits protégé dans logement	2,7	15,7	Protected dug well or protected spring	9,2	11,5
Puits protégé cour/parcelle	0,9	0,3	Rainwater (into tank or cistern )	0,0	0,1
Puits public protégé	1,7	32,1	Unprotected dug well or spring	8,8	34,6
Puits ouvert dans logement	1,5	1,7	Water taken directly from pond-water or stream	0,0	0,2
Puits ouvert cour/parcelle	1,5	1,8	Tanker-truck, vendor	0,2	2,1
Puits public ouvert	2,2	26,9	TOTAL	100,0	100,0
Source	0	1,3	Ratio of protected /all wells and springs	0,61	0,53
Fleuve/rivière	0	3,6			
Mare/lac	0,4	12			
Barrage	0	0,4			
Camion citerne	0	0			
Autre	0,3	0,1			
ND	0,1	0,1			
TOTAL	99,9	99,9			
Ratio de puits protégés	0,50	0,61			
Ratio de sources/Source,fleuve,rivière	#DIV/0!	0,27			
Estimated 50% of protected springs	0,0	0,7			
<b>Access to improved drinking water sources</b>	<b>94%</b>	<b>53%</b>	<b>Access to improved drinking water sources</b>	<b>91%</b>	<b>63%</b>
<b>% House connections</b>	<b>33%</b>	<b>0%</b>	<b>% House connections</b>	<b>13%</b>	<b>0%</b>

Source: Burkina Faso Demographic and Health Survey 2003.

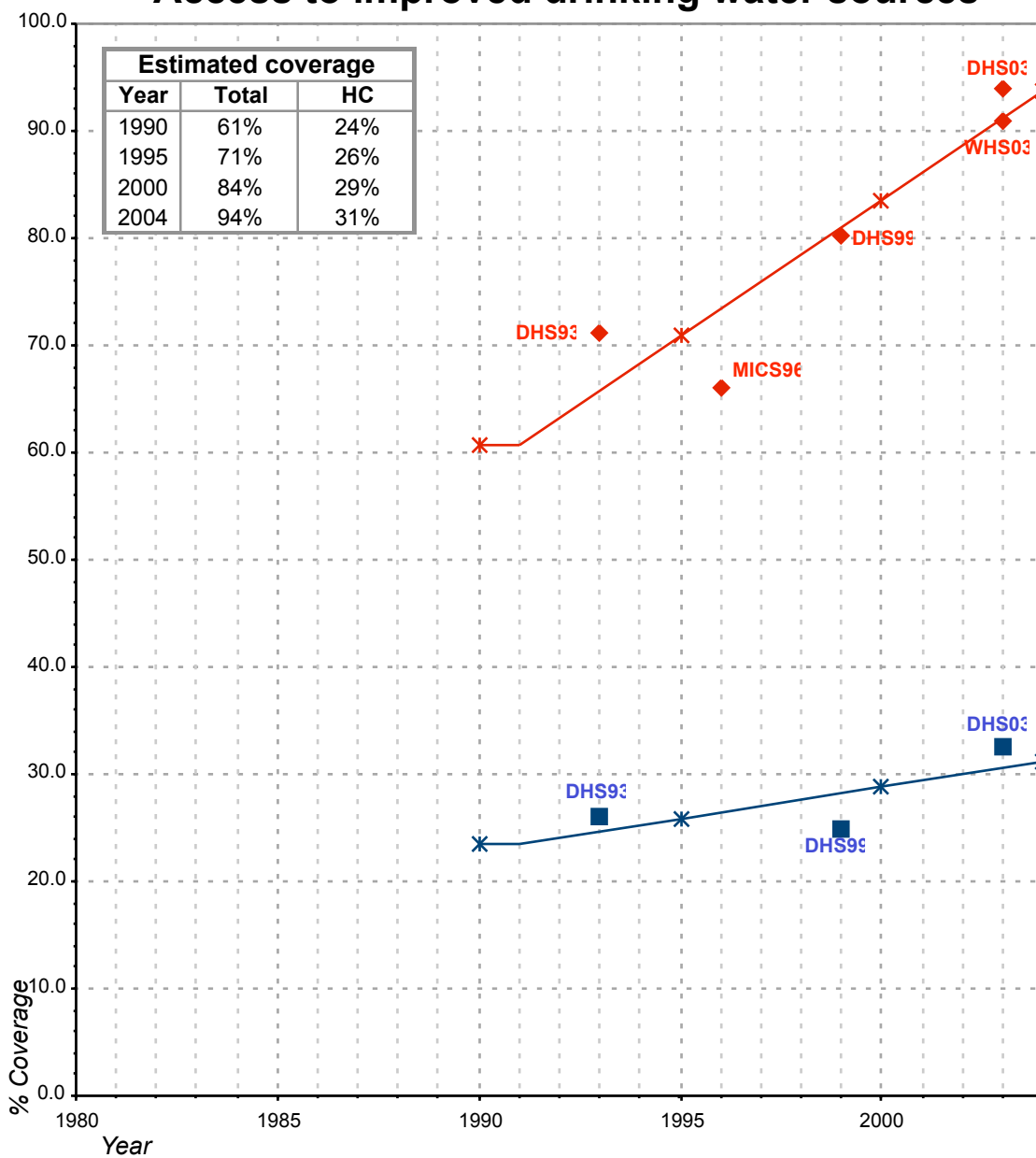
Source: World Health Survey, WHO, 2003.

Estimate		
FORM-6/WHO	1999	
Water	Urban	Rural
Population served with household connection	276	16
Population without household connection but with reasonable access to a public water point	1 563	6 926
<b>Total population served</b>	<b>1 839</b>	<b>6 942</b>
Total population unserved	40	868
<b>Total population</b>	<b>1 879</b>	<b>7 810</b>
<b>Access to improved drinking water sources</b>	<b>98%</b>	<b>89%</b>
<b>% House connections</b>	<b>15%</b>	<b>0%</b>

Source: Global Water Supply and Sanitation Assessment 2000. Water Supply and Sanitation Questionnaire - 1999. Form 6 sent to WHO.

Burkina Faso			DRINKING WATER							
			URBAN				RURAL			
			HC		Total		HC		Total	
Source	Code	Year	Used for estimates	Not used for estimates	Used for estimates	Not used for estimates	Used for estimates	Not used for estimates	Used for estimates	Not used for estimates
The International Drinking Water Supply and Sanitation Decade. Review of Mid-Decade Progress (as at December 1985). WHO 1987.	WHO85	1985				43.0				69.0
The International Drinking Water Supply and Sanitation Decade. Review of National Progress (as at December 1988). WHO 1990.	WHO88	1988				44.0				72.0
The International Drinking Water Supply and Sanitation Decade. End of Decade Review (as at December 1990). WHO1992.	WHO90	1990								70.0
Water Supply and Sanitation Sector Monitoring Report 1993 (Sector Status as of 31 December 1991)	JMP93	1991				78.0				78.0
Burkina-Faso Demographic and Health Survey 1993.	DHS93	1993	26.0		71.1		0.8		38.9	
Water Supply and Sanitation Sector Monitoring Report - 1996. Sector Status as of 31 December 1994. WHO/UNICEF 1996.	JMP96	1994								
Implementation of Mid-Decade Goals for Burkina-Faso Children by 1995: Analysis and Evaluation, General Statistics Office and Burkina-Faso Committee for Protection and Care of Children	MICS96	1996			66.1				37.4	
Global Water Supply and Sanitation Assessment 2000. Water Supply and Sanitation Sector Questionnaire - 1999. (Form 6 sent to WHO)	JMP99	1999		14.7		98.0		0.2		89.0
Burkina-Faso Demographic and Health Survey 1998/9.	DHS99	1999	25.0		80.2		0.1		48.4	
Burkina Faso Demographic and Health Survey 2003.	DHS03	2003	32.6		93.9		0.0		52.7	
World Health Survey, WHO, 2003.	WHS03	2003		13.0	91.0		0.3			63.1

# Burkina Faso - urban - Access to improved drinking water sources



**Total improved access**

◆ Used for estimates

✱ Estimates

**Household connections (HC)**

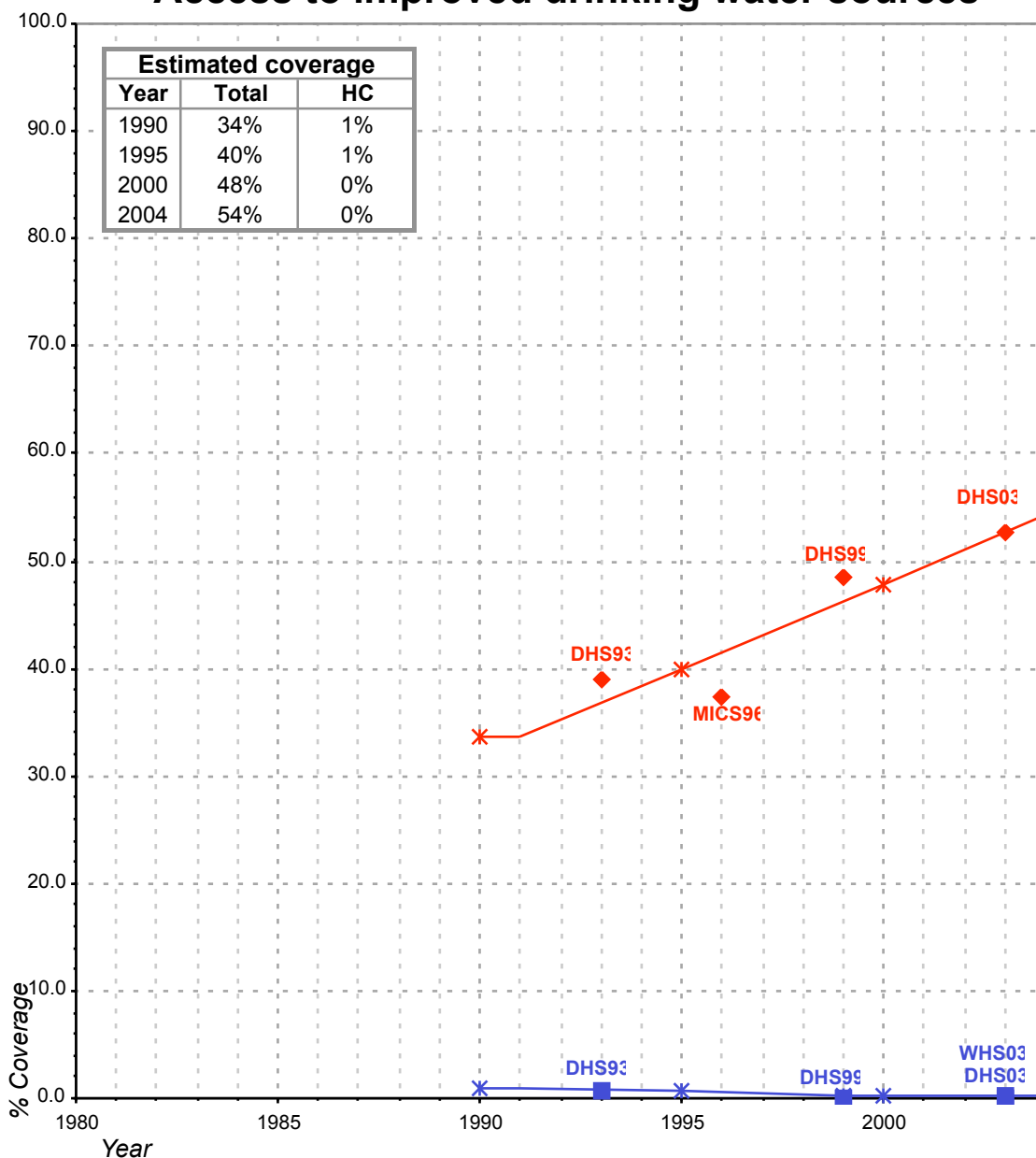
■ Used for estimates

✱ Estimates

**Total access :**

**Household connections :** WHS has not been used for water, because coverage of the categories d the other surveys.

# Burkina Faso - rural - Access to improved drinking water sources



### Total improved access

- ◆ Used for estimates
- ✱ Estimates

### Household connections (HC)

- Used for estimates
- ✱ Estimates

**Total access** : WHS has not been used for water, because coverage of the categories do not match surveys.

**Household connections** :