



WHO / UNICEF

**Joint Monitoring Programme
for Water Supply and Sanitation**

Coverage Estimates

Improved Drinking Water

Updated in June 2006

Congo

Estimate

FORM-6/WHO	1999	
(Population in thousands)		
WATER	Urban	Rural
Population served with household connection	946'880.00	56'384.00
connection but with reasonable access to a public water point	213'405.00	144'069.00
Total population served	1'160'285.00	200'453.00
Total population unserved		
Total population	1'620'639.00	1'181'815.00
Population with safe drinking water	72%	17%
% House connections	58%	5%

Source: Global Water Supply and Sanitation Assessment 2000. Water Supply and Sanitation Sector Questionnaire - 1999. (Form 6)

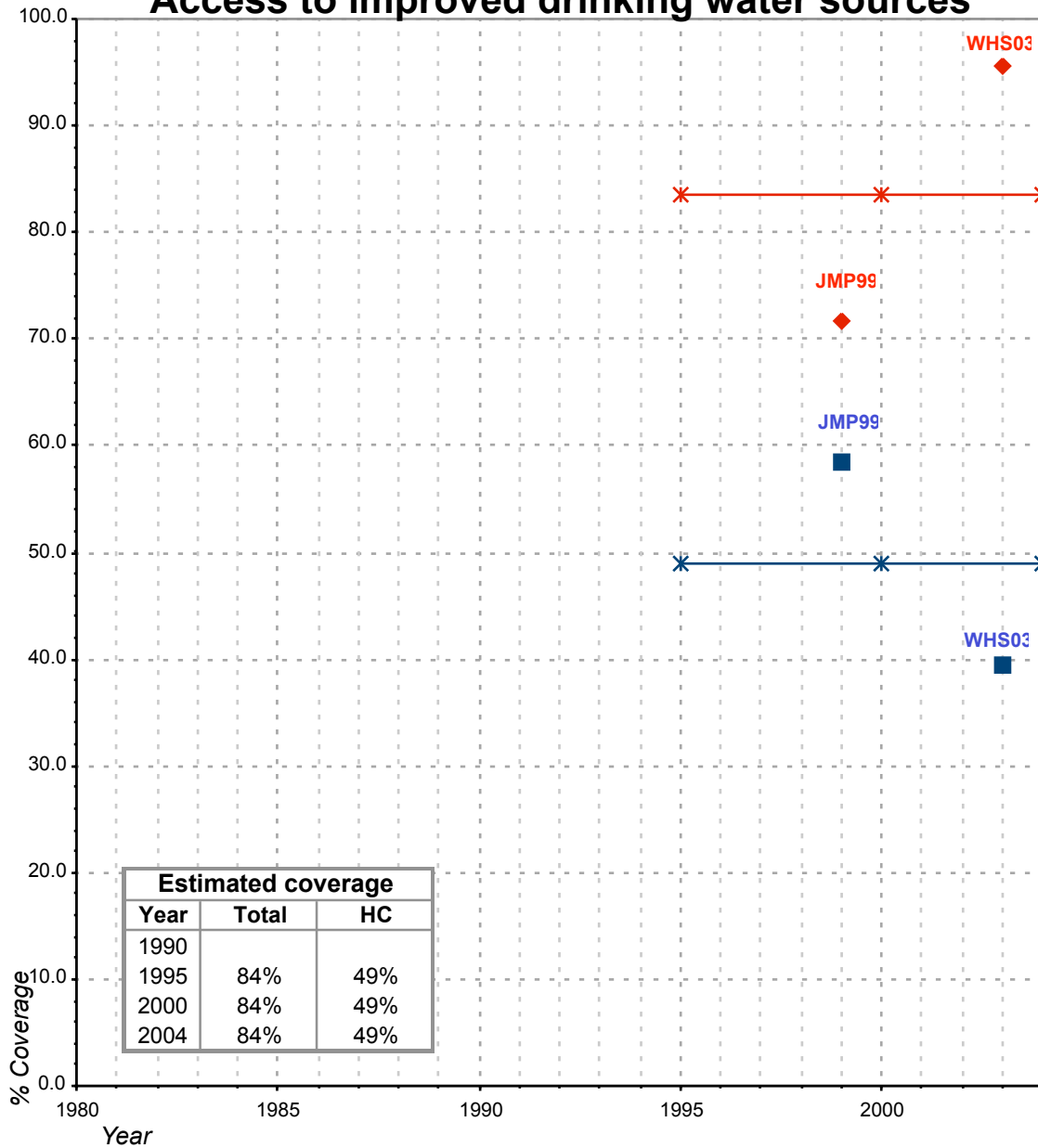
Survey

WHS	2003	
WATER	Urban	Rural
Piped water through house connection or yard	39.5	2.6
Public standpipe	35.3	5.1
Protected tube well or bore hole	3.4	2.7
Protected dug well or protected spring	16.2	25.1
Rainwater (into tank or cistern)	1.3	1.9
Unprotected dug well or spring	3.2	38.3
Water taken directly from pond-water or stream	0.0	0.2
Tanker-truck, vendor	1.1	24.1
TOTAL	100.0	100.0
Ratio of protected /all wells and springs	0.86	0.42
Access to improved drinking water sources	96%	37%
% House connections	39%	3%

Source: World Health Survey, WHO, 2003.

Congo			DRINKING WATER							
			URBAN				RURAL			
			HC		Total		HC		Total	
Source	Code	Year	Used for estimates	Not used for estimates	Used for estimates	Not used for estimates	Used for estimates	Not used for estimates	Used for estimates	Not used for estimates
The International Drinking Water Supply and Sanitation Decade. Review of National Progress (as at December 1983). WHO 1986.	WHO83	1983		34.0		42.0				7.0
The International Drinking Water Supply and Sanitation Decade. Review of National Progress (as at December 1988). WHO 1990.	WHO88	1988				92.0				2.0
Global Water Supply and Sanitation Assessment 2000. Water Supply and Sanitation Sector Questionnaire - 1999. (Form 6 sent to WHO)	JMP99	1999	58.4		71.6		4.8		17.0	
World Health Survey, WHO, 2003.	WHS03	2003	39.5		95.6		2.6		37.4	

Congo - urban - Access to improved drinking water sources



Total improved access

Household connections (HC)

◆ Used for estimates

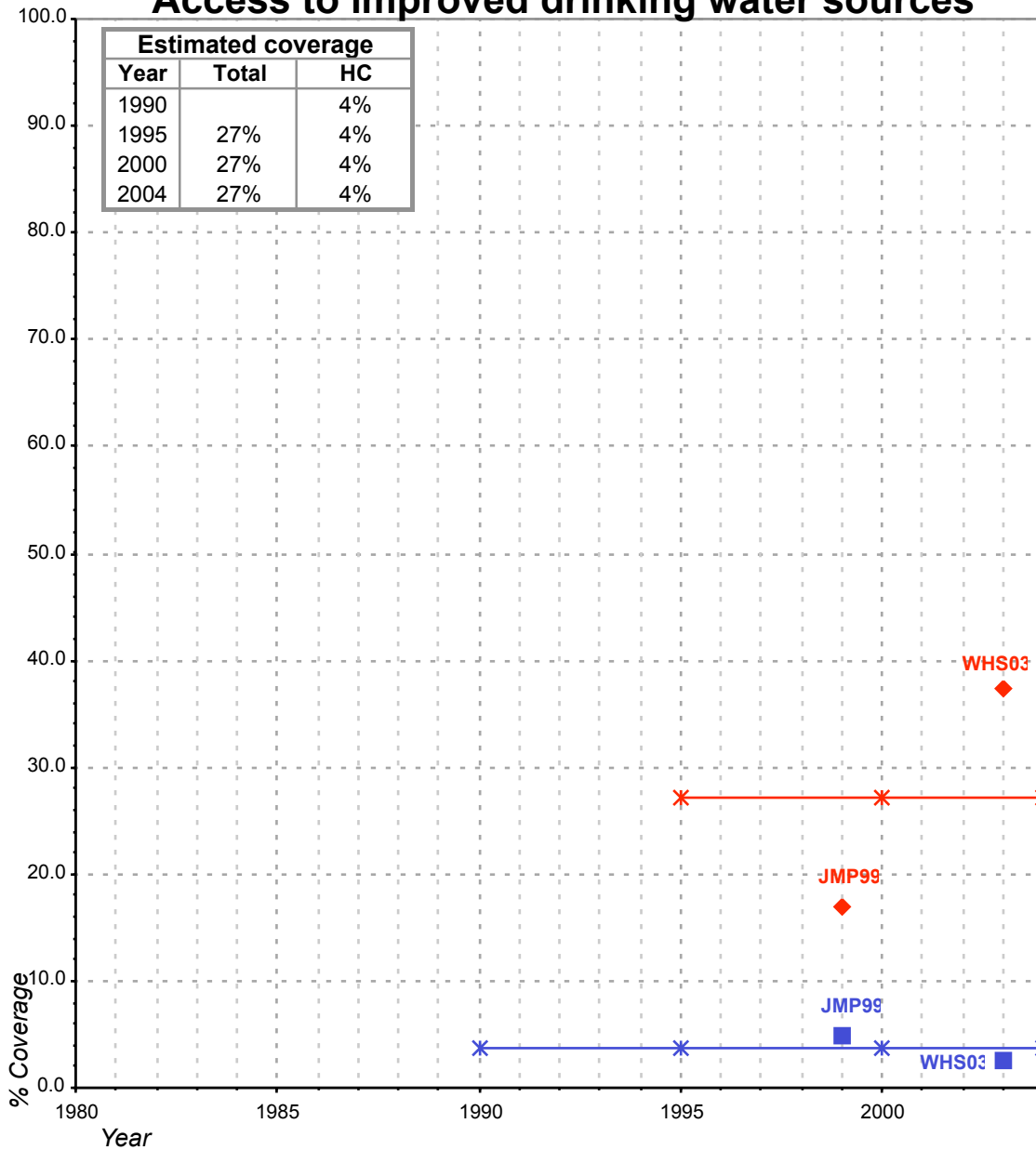
■ Used for estimates

✱ Estimates

✱ Estimates

Total access :
Household connections :

Congo - rural - Access to improved drinking water sources



Total improved access

Household connections (HC)

◆ Used for estimates

■ Used for estimates

✱ Estimates

✱ Estimates

Total access :
Household connections :