



WHO / UNICEF

**Joint Monitoring Programme
for Water Supply and Sanitation**

Coverage Estimates
Improved Sanitation

Updated in June 2006

Cape Verde

IDSR 1998		
WATER	Urban	Rural
Con casa de banho e retrete	32	11.4
so casa de banho	29.3	7.9
so retrete	3.1	1.3
So case de banho nem retrete	35.6	79.4
TOTAL	100	100
Access to improved sanitation	61%	19%
% House connections	32%	11%

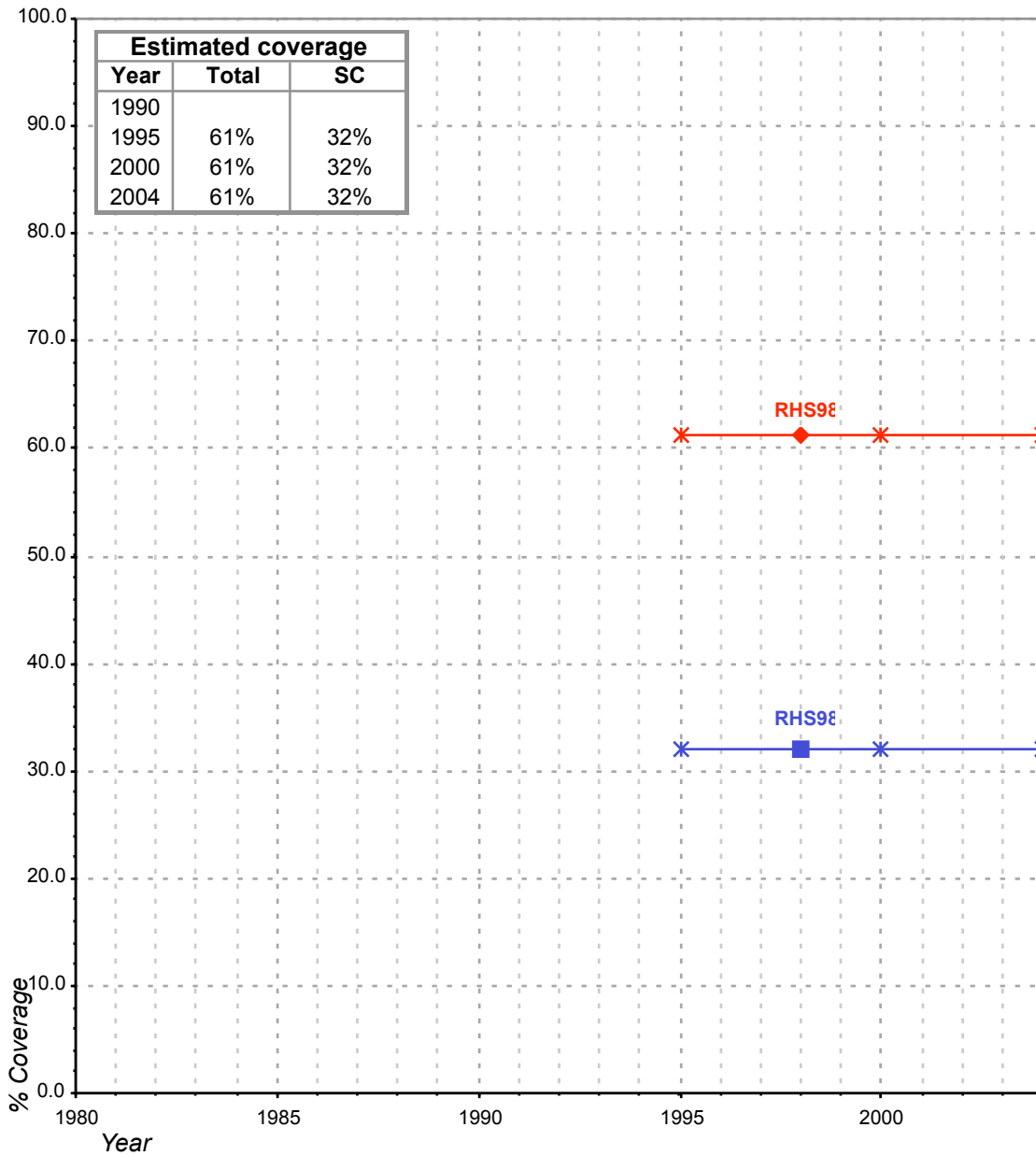
Source: Inquerito Demografico e de Saude Reproductiva, 1998

Estimate		
FORM6/WHO	1999	
(Population in thousands)		
SANITATION	Urban	Rural
Population served with household connections to conventional sewers	112.43	37.61
Population without household connections but served with adequate, private or shared on-site system	63.72	24.81
Total population served	176.15	62.42
Total population unserved	9.96	134.50
Total population	186.11	196.92
Population with adequate sanitation	95%	32%
% House connections	60%	19%

Source: Global Water Supply and Sanitation Assessment 2000. Water Supply and Sanitation Sector Questionnaire - 1999. (Form 6 sent to WHO)

Cap Verde			SANITATION							
			URBAN				RURAL			
			HC		Total		HC		Total	
Source	Code	Year	Used for estimates	Not used for estimates	Used for estimates	Not used for estimates	Used for estimates	Not used for estimates	Used for estimates	Not used for estimates
The International Drinking Water Supply and Sanitation Decade. Review of National Progress (as at December 1983). WHO 1986.	WHO83	1983		19.0		49.0				8.0
The International Drinking Water Supply and Sanitation Decade. Review of Mid-Decade Progress (as at December 1985). WHO 1987.	WHO85	1985		13.0		32.0				9.0
The International Drinking Water Supply and Sanitation Decade. Review of National Progress (as at December 1988). WHO 1990.	WHO88	1988		13.0		35.0				
Water Supply and Sanitation Sector Monitoring Report - 1996. Sector Status as of 31 December 1994. WHO/UNICEF 1996.	JMP96	1993				40.0				10.0
Inquerito Demografico e de Saude Reproductiva, relatorio Preliminar, 1998	RHS98	1998	32.0		61.3		11.4		19.3	
Global Water Supply and Sanitation Assessment 2000. Water Supply and Sanitation Sector Questionnaire - 1999. (Form 6 sent to WHO)	JMP99	1999		60.4		94.6		19.1		31.7

Cap Verde - urban - Access to improved sanitation coverage



Total improved access

Sewerage connections (SC)

◆ Used for estimates

■ Used for estimates

✱ Estimates

✱ Estimates

Total access :

Sewerage connections :

Cap Verde - rural - Access to improved sanitation coverage

