



**WHO / UNICEF**

**Joint Monitoring Programme  
for Water Supply and Sanitation**

Coverage Estimates

**Improved Drinking Water**

Updated in June 2006

---

**Ecuador**

---



## Urban and Rural Water - Ecuador

WHS 2003		
WATER	Urban	Rural
Piped water through house connection or yard	92,1	68,3
Public standpipe	1,1	2,1
Protected tube well or bore hole	1,7	14,4
Protected dug well or protected spring	1,4	4,2
Rainwater (into tank or cistern )	0,2	0,7
Unprotected dug well or spring	0,5	3,8
Water taken directly from pond-water or stream	0,1	4,5
Tanker-truck, vendor	3,0	2,0
<b>TOTAL</b>	<b>100,0</b>	<b>100,0</b>
Ratio of protected /all wells and springs	0,86	0,83
<b>Access to improved drinking water sources</b>	<b>96%</b>	<b>90%</b>
<b>% House connections</b>	<b>92%</b>	<b>68%</b>

Source: World Health Survey, WHO, 2003.

Census 1990		
(Population in thousands)		
WATER	Urban	Rural
Household Connection	3 898	1 329
Shared Water Point	245	350
Well	246	1 093
Distributing vehicle	880	312
Other	77	1 218
<b>Well</b>	<b>4 143</b>	<b>1 679</b>
<b>TOTAL</b>	<b>5 346</b>	<b>4 302</b>
Estimation of protected wells based on WHS03	211	909
Improved drinking water Excluding Well Water	77%	39%
Improved drinking water including all Wells	82%	64%
<b>Access to improved drinking water sources (incl 50% well)</b>	<b>81%</b>	<b>60%</b>
<b>% House connections</b>	<b>73%</b>	<b>31%</b>

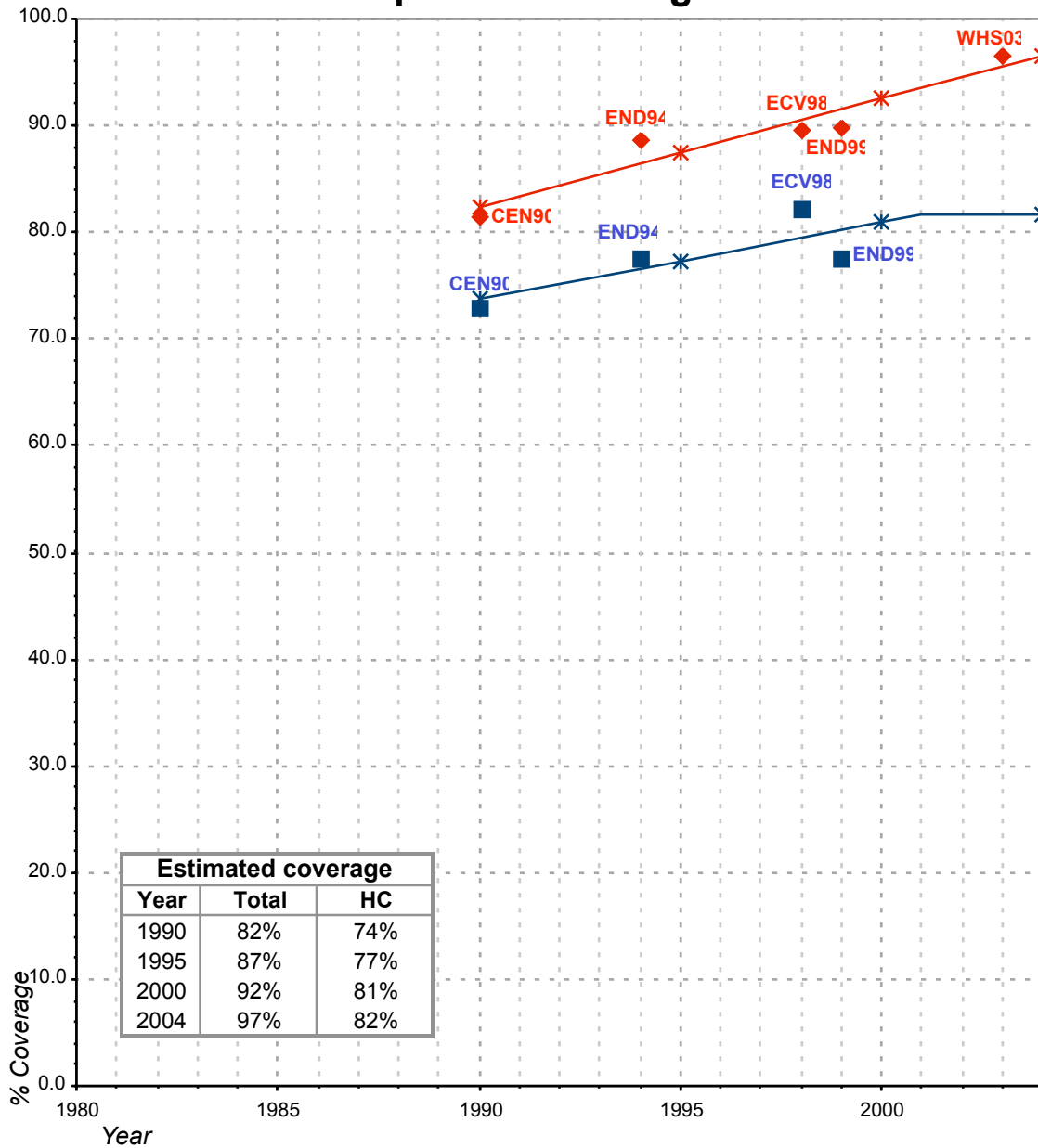
Source; 1990 census as recorded in the Global Water Supply and Sanitation Assessment 2000. Water Supply and Sanitation Sector Questionnaire - 1999.

Estimate 1999		
FORM-6/WHO 1999		
(Population in thousands)		
WATER	Urban	Rural
Population served with household connection	5 872	1 907
Population without household connection but with reasonable access to a public water point	348	428
<b>Total population served</b>	<b>6 220</b>	<b>2 335</b>
Total population unserved	1 415	2 205
<b>Total population</b>	<b>7 635</b>	<b>4 540</b>
<b>Access to improved drinking water sources</b>	<b>81%</b>	<b>51%</b>
<b>% House connections</b>	<b>77%</b>	<b>42%</b>

Source; Global Water Supply and Sanitation Assessment 2000. Water Supply and Sanitation Sector Questionnaire - 1999. (Form 6 sent to WHO)

Ecuador			DRINKING WATER							
			URBAN				RURAL			
			HC		Total		HC		Total	
Source	Code	Year	Used for estimates	Not used for estimates	Used for estimates	Not used for estimates	Used for estimates	Not used for estimates	Used for estimates	Not used for estimates
The International Drinking Water Supply and Sanitation Decade. Review of National Baseline Data (as at December 1980). WHO 1984	WHO 80	1980		47.0		82.0				16.0
The International Drinking Water Supply and Sanitation Decade. Review of National Progress (as at December 1983). WHO 1986.	WHO 83	1983		59.0		98.0				21.0
The International Drinking Water Supply and Sanitation Decade. Review of Mid-Decade Progress (as at December 1985). WHO 1987.	WHO 85	1985		76.0		81.0				31.0
Ecuador Demographic and Health Survey,1987	DHS87	1987								
The International Drinking Water Supply and Sanitation Decade. Review of National Progress (as at December 1988). WHO 1990.	WHO88	1988		72.0		75.0				37.0
The International Drinking Water Supply and Sanitation Decade. End of Decade Review (as at December 1990). WHO1992.	WHO90	1990		60.0		63.0				44.0
1990 census as recorded in the Global Water Supply and Sanitation Assessment 2000. Water Supply and Sanitation Sector Questionnaire - 1999. (Form 4 sent to WHO)	CEN90	1990	72.9		81.4		30.9		60.2	
Water Supply and Sanitation Sector Monitoring Report 1993 (Sector Status as of 31 December 1991)	JMP93	1991				63.0				38.0
Water Supply and Sanitation Sector Monitoring Report - 1996. Sector Status as of 31 December 1994. WHO/UNICEF 1996.	JMP96	1993				82.0				34.0
ENDEMAIN-94, CEPAR/USAID/CDC/UNFPA	END94	1994	77.5		88.7		36.1		73.9	
Desigualdades en el acceso, uso y gasto con el agua potable en America Latina y el Caribe, Ecuador, PAHO, Feb 2001, based on ECV 1998	ECV98	1998	82.1		89.7		50.5		73.5	
Ecuador, CEPAR, ENDEMAIN-99	END99	1999	77.5		89.8		35.4		75.1	
Global Water Supply and Sanitation Assessment 2000. Water Supply and Sanitation Sector Questionnaire - 1999. (Form 6 sent to WHO)	JMP99	1998		76.9		81.0		42.0		51.0
World Health Survey, WHO, 2003.	WHS03	2003		93.3	96.4			71.3	89.7	

# Ecuador - urban - Access to improved drinking water sources



**Total improved access**

◆ Used for estimates

✱ Estimates

**Household connections (HC)**

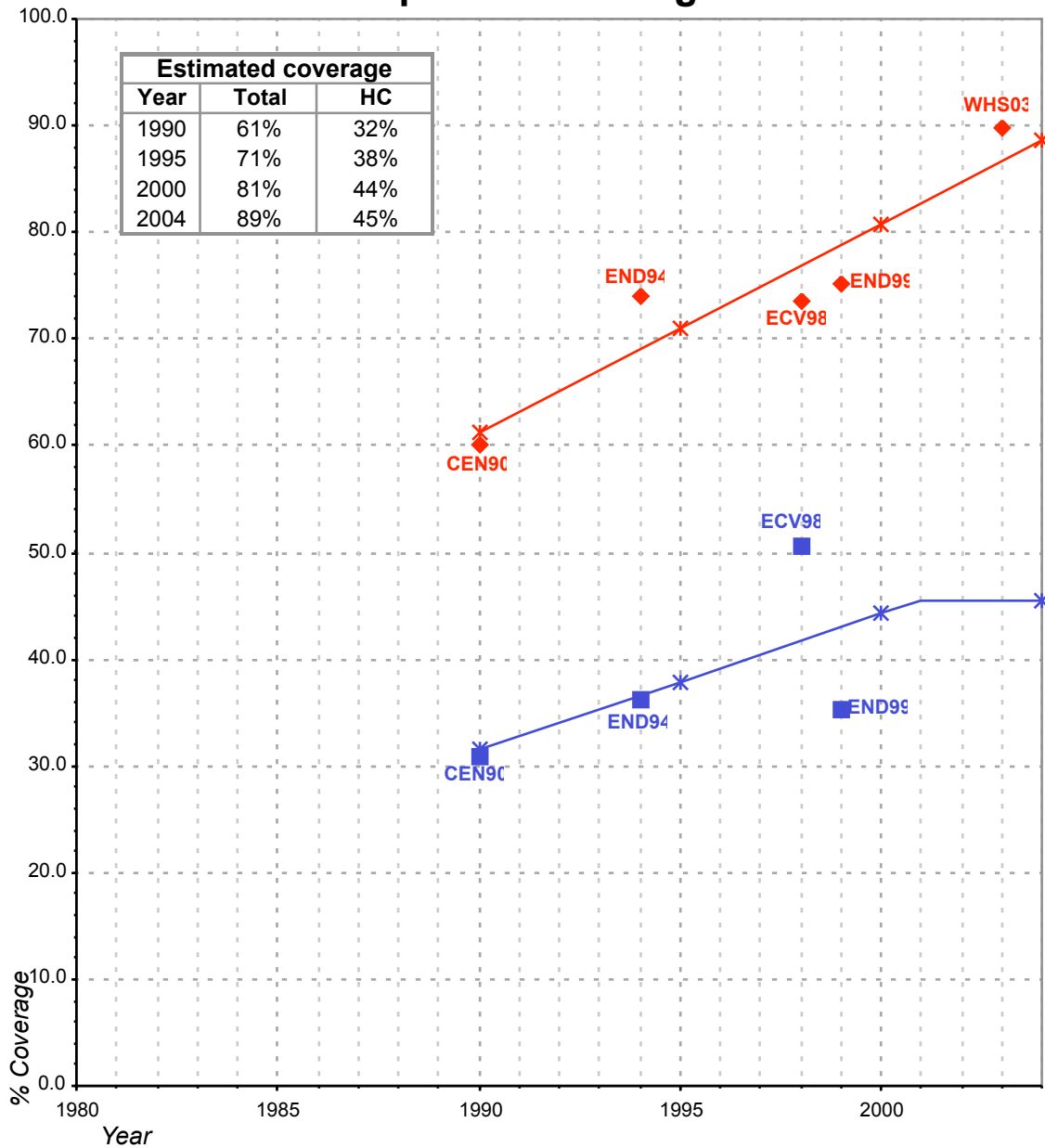
■ Used for estimates

✱ Estimates

**Total access :**

**Household connections :** WHS has not been used because of a too excessive value compared surveys.

# Ecuador - rural - Access to improved drinking water sources



### Total improved access

- ◆ Used for estimates
- ✱ Estimates

### Household connections (HC)

- Used for estimates
- ✱ Estimates

**Total access :**

**Household connections :** WHS has not been used because of a too excessive value compared surveys.