



WHO / UNICEF

**Joint Monitoring Programme
for Water Supply and Sanitation**

Coverage Estimates
Improved Sanitation

Updated in June 2006

Ghana

d Rural Sanitation - Ghana

Survey

LS Survey 1988			
SANITATION	Urban	Rural	Total
Flush toilet*	13,0	0,9	4,8
Pit latrine	41,2	64,8	57,2
Pan/ Bucket	25,6	7,3	13,2
No toilet	10,5	24,6	20,0
Other	9,7	2,5	4,8
TOTAL	100,0	100,1	100,0
* Flush corrected for proportion shared on basis of DHS 1993	8,6	0,5	
*** Estimation of "VIP latrines", based on DHS88	6,7	1,6	
Estimation of Ventilated improved pit latrine not shared, based on WHS03	1,1	0,3	
Estimation of "Traditional Pit Latrine" and "Bucket/pan" improved and private, based on WHS03	9,4	8,7	
Access to improved sanitation	19%	10%	

Source: Ghana Living standards Survey, 1988

DHS 1988		
SANITATION	Urban	Rural
Domestic Connection*	17,5	1,2
Pit	32,6	58,9
KVIP (Kumasi Ventilated Improved Pit)	6,4	1,5
Other	0,2	0,4
No Facilities	14,9	31,2
Pan	28,4	6,8
TOTAL	100,0	100,0
* "Domestic connection" corrected for proportion shared on basis of DHS 1993	11,5	0,7
<i>Proportion VIP</i>	<i>0,16</i>	<i>0,02</i>
Estimation of Ventilated improved pit latrine not shared, based on WHS03	1,0	0,3
Estimation of "Traditional Pit Latrine" and "Bucket/pan" improved and private, based on WHS03	8,6	7,9
Access to improved sanitation	21%	9%

Source: DHS Ghana, 1988

DHS 1993		
SANITATION	Urban	Rural
Own Flush Toilet	10,3	0,5
Shared Flush Toilet	5,3	0,4
Traditional Pit Latrine	29,2	59,5
VIP	27,8	7,2
Bucket/Pan	19,2	1,7
No Facilities/Bush	8,3	30,6
TOTAL	100	100
<i>proportion shared flush toilet</i>	<i>0,34</i>	<i>0,44</i>
Estimation of Ventilated improved pit latrine not shared, based on WHS03	4,5	1,6
Estimation of "Traditional Pit Latrine" and "Bucket/pan" improved and private, based on WHS03	6,8	7,3
Access to improved sanitation	22%	9%
Estimation of private sewerage connections	7%	0%

Source: DHS Ghana, 1993

MICS 1995			
SANITATION	Urban	Rural	Total
VIP/KVIP Latrine	15	8	11
Pan/bucket latrine	22	1	9
Water Closet *	21	2	9
Pit latrine	8	52	36
Septic tank	29	3	13
No Facilities	5	34	23
TOTAL	100	100	101
* "Water closet and septic tank" corrected for proportion shared on basis of an average of DHS 1993 and DHS98 ratios	27,2	2,5	
Estimation of Ventilated improved pit latrine not shared, based on WHS03	2,4	1,8	
Estimation of "Traditional Pit Latrine" and "Bucket/pan" improved and private, based on WHS03	4,2	6,4	
Access to improved sanitation	34%	11%	
Estimation of private sewerage connections	11%	2%	

Estimate

DHS 1998		
SANITATION	Urban	Rural
Own flush toilet	10,5	1,2
Traditional pit toilet	21,7	50,8
Ventilated improved pit toilet	36,9	18,2
Share flush toilet	7,8	0,9
Bucket/pan	13,7	2,3
No facility/bush	9,4	26,6
<i>proportion shared flush toilet</i>	0,57	0,57
TOTAL	100	100
Estimation of Ventilated improved pit latrine not shared, based on WHS03	6,0	4,0
Estimation of "Traditional Pit Latrine" and "Bucket/pan" improved and private, based on WHS03	5,0	6,4
Access to improved sanitation	21%	12%
Estimation of private sewerage connections	8%	1%

Source: Ghana Demographic and Health Survey 1998.

DHS 2003		
SANITATION	Urban	Rural
Flush toilet	21,2	1,7
Ventilated improved pit latrine	40,8	13,5
Traditional pit toilet	26,7	54
No facility, bush, field	6,7	30,6
Bucket, pan	4,5	0,2
Missing	0,1	0,1
TOTAL	100	100
* "Flush toilet" corrected for proportion shared on basis of WHS03	15,2	1,6
Estimation of Ventilated improved pit latrine not shared, based on WHS03	6,6	3,0
Estimation of "Traditional Pit Latrine" and "Bucket/pan" improved and private, based on WHS03	4,4	6,5
Access to private improved sanitation	26%	11%
Estimation of private sewerage connections	11%	1%

Source: Ghana Demographic and Health Survey 2003.

WHS 2003		
SANITATION	Urban	Rural
Private domestic connection to sewage system	14,1	2,9
Shared domestic connection to sewage system	1,3	0,0
Private flush to septic tank	5,6	0,4
Shared flush to septic tank	6,4	0,3
Private pour flush latrine	0,2	0,0
Shared pour flush latrine	0,8	0,0
Private covered dry latrine (with privacy)	7,0	6,7
Shared covered dry latrine (with privacy)	36,0	23,6
Uncovered dry latrine (without privacy)	6,7	25,3
Bucket latrine (where fresh excreta are manually removed)	4,2	0,6
No facilities (open defecation)	10,9	36,6
Other	6,9	3,6
TOTAL	100,0	100,0
Ratio of private among covered dry latrine (with privacy)	0,16	0,22
Ratio of private covered latrine among dry latrines	0,14	0,12
Ratio of private among flush	0,72	0,92
Ratio of private sewerage connection among flush	0,52	0,81
Ratio of sewerage among private flush	0,72	0,88
% Private improved sanitation	27%	10%
% Private sewerage connections	14%	3%

Source: World Health Survey, WHO, 2003.

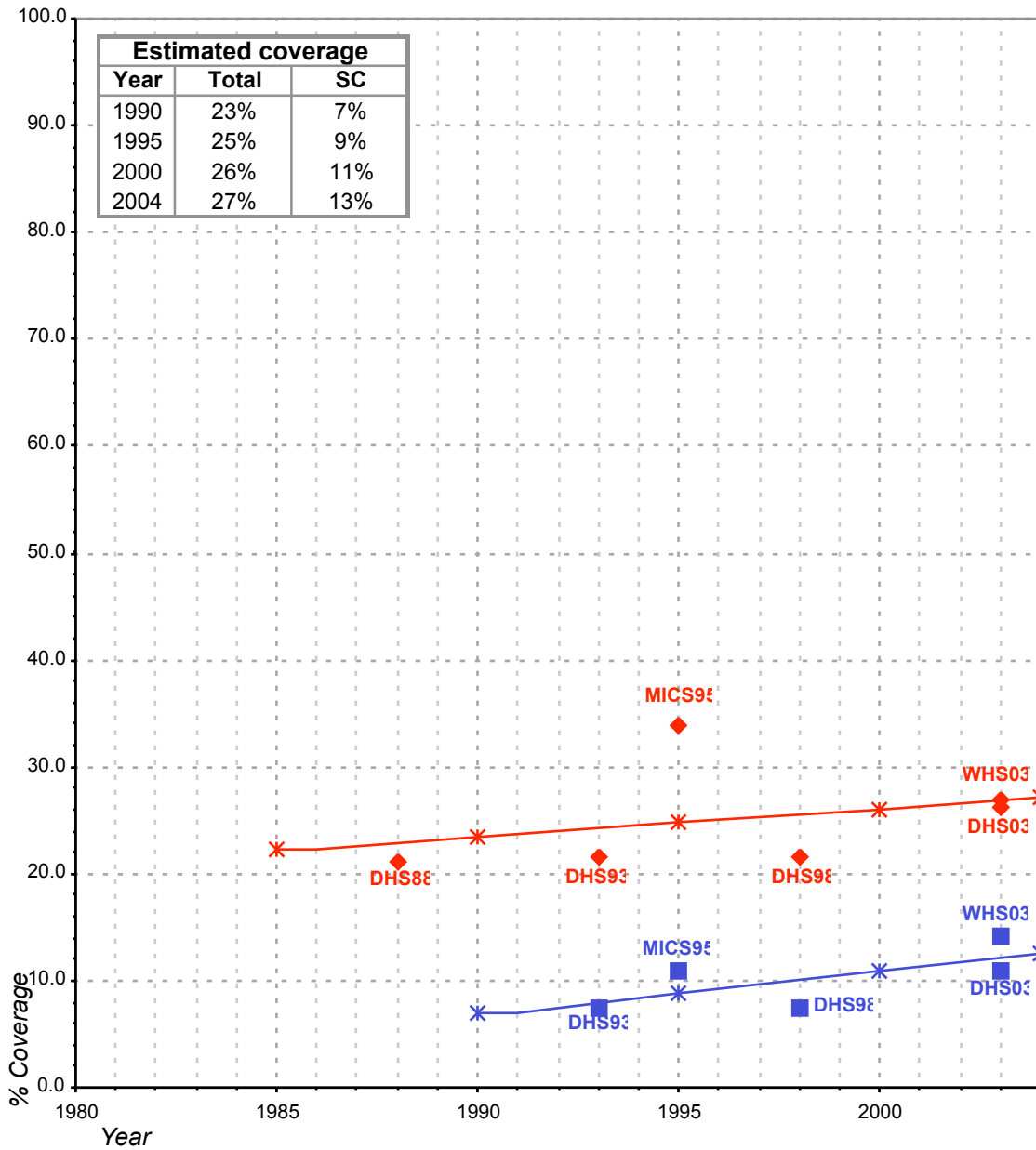
Estimate

FORM6/WHO 1999		
(Population in thousands)		
SANITATION	Urban	Rural
Population served with household connections to conventional sewers	1 844	0
Population without household connections but served with adequate, private or shared on-site system	1 574	1 254
Total population served	3 418	1 254
Total population unserved	517	7 104
Total population	3 935	8 361
Access to improved sanitation	87%	15%
% House connections	47%	0%

Source: Global Water Supply and Sanitation Assessment 2000. Water Supply and Sanitation

Ghana			SANITATION							
			URBAN				RURAL			
			HC		Total		HC		Total	
Source	Code	Year	Used for estimates	Not used for estimates	Used for estimates	Not used for estimates	Used for estimates	Not used for estimates	Used for estimates	Not used for estimates
The International Drinking Water Supply and Sanitation Decade. Review of National Baseline Data (as at December 1980). WHO 1984	WHO80	1980		4.0		47.0				17.0
The International Drinking Water Supply and Sanitation Decade. Review of National Progress (as at December 1983). WHO 1986.	WHO83	1983		4.0		47.0				16.0
The International Drinking Water Supply and Sanitation Decade. Review of Mid-Decade Progress (as at December 1985). WHO 1987.	WHO85	1985		4.0		61.0				16.0
Source: Ghana Living standards Survey, 1988	LSS88	1988				45.3				37.3
Ghana Demographic and Health Survey 1988.	DHS88	1988			21.1				8.9	
The International Drinking Water Supply and Sanitation Decade. Review of National Progress (as at December 1988). WHO 1990.	WHO88	1988		4.0		64.0				15.0
The International Drinking Water Supply and Sanitation Decade. End of Decade Review (as at December 1990). WHO1992.	WHO90	1990		13.0		63.0				60.0
Water Supply and Sanitation Sector Monitoring Report 1993 (Sector Status as of 31 December 1991)	JMP93	1991				64.0				32.0
Ghana Demographic and Health Survey 1993.	DHS93	1993	7.4		21.6		0.4		9.4	
Water Supply and Sanitation Sector Monitoring Report - 1996. Sector Status as of 31 December 1994. WHO/UNICEF 1996.	JMP96	1993				53.0				36.0
MICS Survey 1995	MICS95	1995	10.8		33.8		1.6		10.6	
Ghana Demographic and Health Survey 1998	DHS98	1998	7.5		21.5		1.1		11.6	
Global Water Supply and Sanitation Assessment 2000. Water Supply and Sanitation Sector Questionnaire - 1999. (Form 6 sent to WHO)	JMP99	1999		46.9		87.0		0.0		15.0
Ghana Demographic and Health Survey 2003.	DHS03	2003	10.9		26.3		1.4		11.0	
World Health Survey, WHO, 2003.	WHS03	2003	14.1		26.9		2.9		9.9	

Ghana - urban - Access to improved sanitation coverage



Total improved access

◆ Used for estimates

✱ Estimates

Sewerage connections (SC)

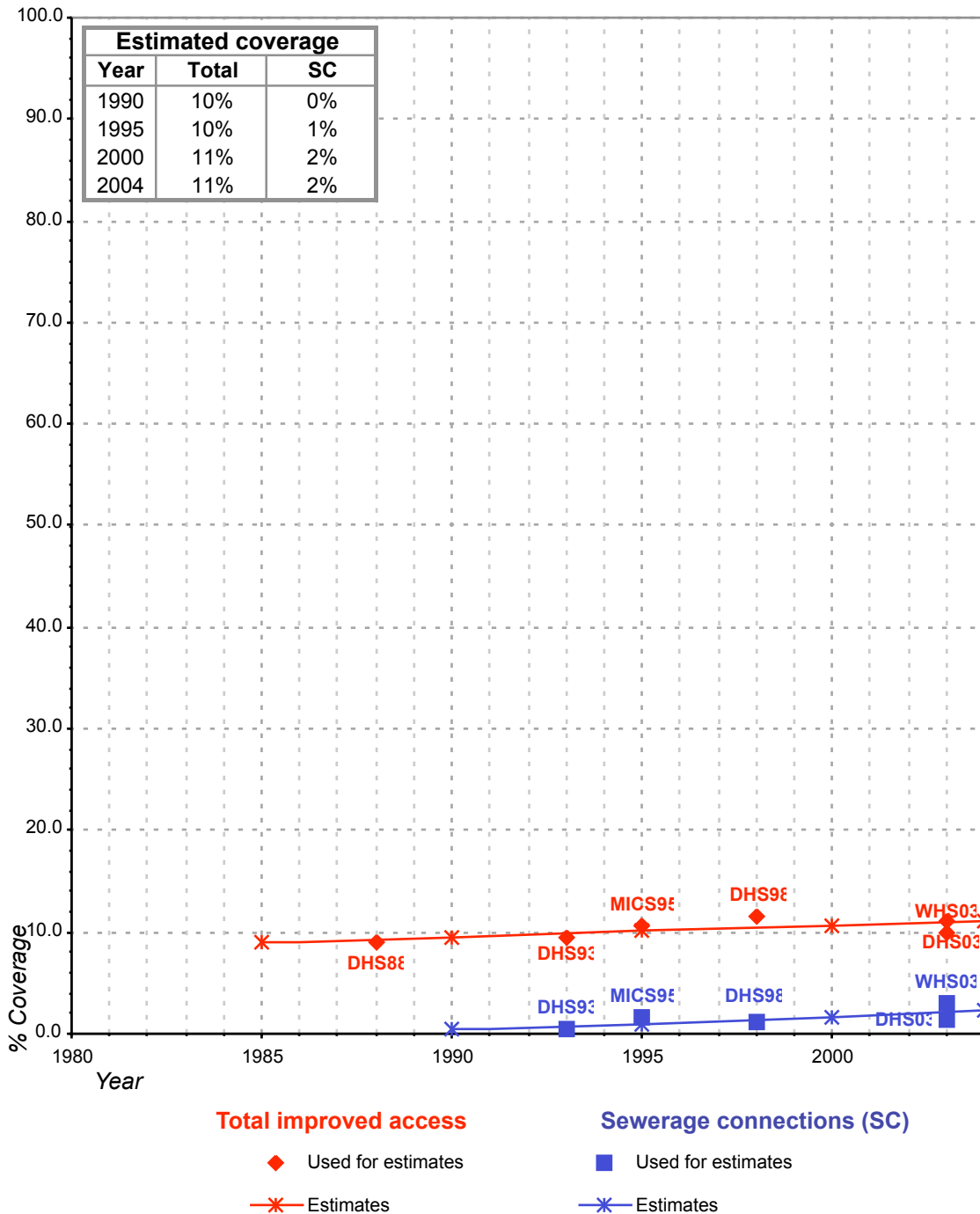
■ Used for estimates

✱ Estimates

Total access :

Sewerage connections :

Ghana - rural - Access to improved sanitation coverage



Total access :

Sewerage connections :