



WHO / UNICEF

**Joint Monitoring Programme
for Water Supply and Sanitation**

Coverage Estimates
Improved Drinking Water

Updated in June 2006

Ghana

Rural Water -

Surveys

LS Survey 1988			
WATER	Urban	Rural	Total
Inside plumbing	28,6	1,0	10,0
Water vendor or truck	10,5	0,0	4,0
Natural sources	15,6	70,0	52,0
Other sources	45,4	29,0	34,0
TOTAL	100,0	100,0	100,0
Protected "Natural sources" estimated at 50% of all natural sources	7,8	35,0	26,0
Improved drinking water source	36%	36%	36%
% House connections	29%	1%	

Source: Ghana Living standards Survey, 1988

DHS 1988		
WATER	Urban	Rural
Standpipe in House	36,34	1,88
Standpipe outside house	34,49	10,33
Rainwater	2,11	0,06
Borehole	1,98	13,38
Well	11,74	5,87
Stream/Lake/River	13,34	66,91
Other	0	1,57
TOTAL	100	100
Protected Wells (estimated using MICS95)	9,13	2,71
Improved drinking water (excl. wells)	74,92	25,65
Improved drinking water (incl Wells)	87	32
Improved drinking water (incl 50%Wells)	84%	28%
% House connections	36%	2%

Source: DHS Ghana, 1988

DHS 1993		
WATER	Urban	Rural
Piped into residence	37,2	2
Public Tap/Neighbour	38,6	10,8
Rainwater	0,7	0,9
Borehole	3,7	26,6
Well in Residence	2,1	1,4
Public Well	7,9	12,3
Spring	0,5	0,9
River/Stream	5,8	36,6
Other	3,2	5,8
Missing Information	0,3	2,8
TOTAL	100	100,1
	0,4908	
Protected Wells (estimated using MICS95)	7,8	6,3
Protected Springs (estimated at 50% of all springs)	0,25	0,45
Improved drinking water (incl %Wells & Springs)	88%	47%
% House connections	37%	2%

Source: DHS Ghana, 1993

MICS 1995			
WATER	Urban	Rural	Total
Piped	48	1	18
Public Tap	26	15	20
Borehole	3	27	18
Protected well	7	6	6
Unprotected well	2	7	5
Rain water	0	1	1
Pond/River	1	41	26
Tanker/ vendor	3	2	2
Other	8	0	3
TOTAL	98	100	99
Ratio protected wells	0,78	0,46	
Improved drinking water	84%	50%	63%
% House connections	48%	1%	

--

Estimate

DHS 1998		
WATER	Urban	Rural
Piped into residence	41,4	3,5
Public tap/neighbour's house	42,6	12,2
Bore hole	3,2	29,6
Rainwater	0,5	0,9
Well in residence	0,8	1,9
Public well	5,2	14,8
Spring	0,4	1,4
River/stream	3,4	25,5
Pond/lake	0,1	2,5
Dam	0,9	4,4
Dugout	0,3	2,8
Tanker/truck	1,2	0,5
TOTAL	100	100
Protected Wells (estimated using MICS95)	4,7	7,7
Estimated 50% of protected springs	0,2	0,7
Access to improved drinking water sources	93%	55%
% House connections	41%	4%

Source: Ghana Demographic and Health Survey 1998.

DHS 2003		
WATER	Urban	Rural
Piped into dwelling	11,5	0,7
Piped into compound/plot	21,9	1,2
Public tap	39,1	8,9
Protected well in dwelling/yard	2,4	1,7
Protected public well	7,8	41,1
Open well in dwelling/yard	2,5	1,3
Open public well	5,9	12,8
Spring	0,3	0,9
River, stream	2	24,3
Pond, lake	0,5	2,4
Dam	0,1	3,7
Rainwater	0,5	0,2
Tanker truck	2,3	0,4
Satchel water	3	0,3
Other	0,4	0
Missing	0	0,1
TOTAL	100,2	100
Estimated 50% of protected springs	0,2	0,5
Access to improved drinking water sources	83%	54%
% House connections	33%	2%

Source: Ghana Demographic and Health Survey 2003.

WHS 2003		
WATER	Urban	Rural
Piped water through house connection or yard	35,0	5,1
Public standpipe	36,0	17,6
Protected tube well or bore hole	9,7	33,9
Protected dug well or protected spring	6,5	9,0
Rainwater (into tank or cistern)	1,3	1,0
Unprotected dug well or spring	5,1	10,7
Water taken directly from pond-water or stream	2,3	21,0
Tanker-truck, vendor	4,2	1,8
TOTAL	100,0	100,0
Ratio of protected /all wells and springs	0,76	0,80
Access to improved drinking water sources	88%	67%
% House connections	35%	5%

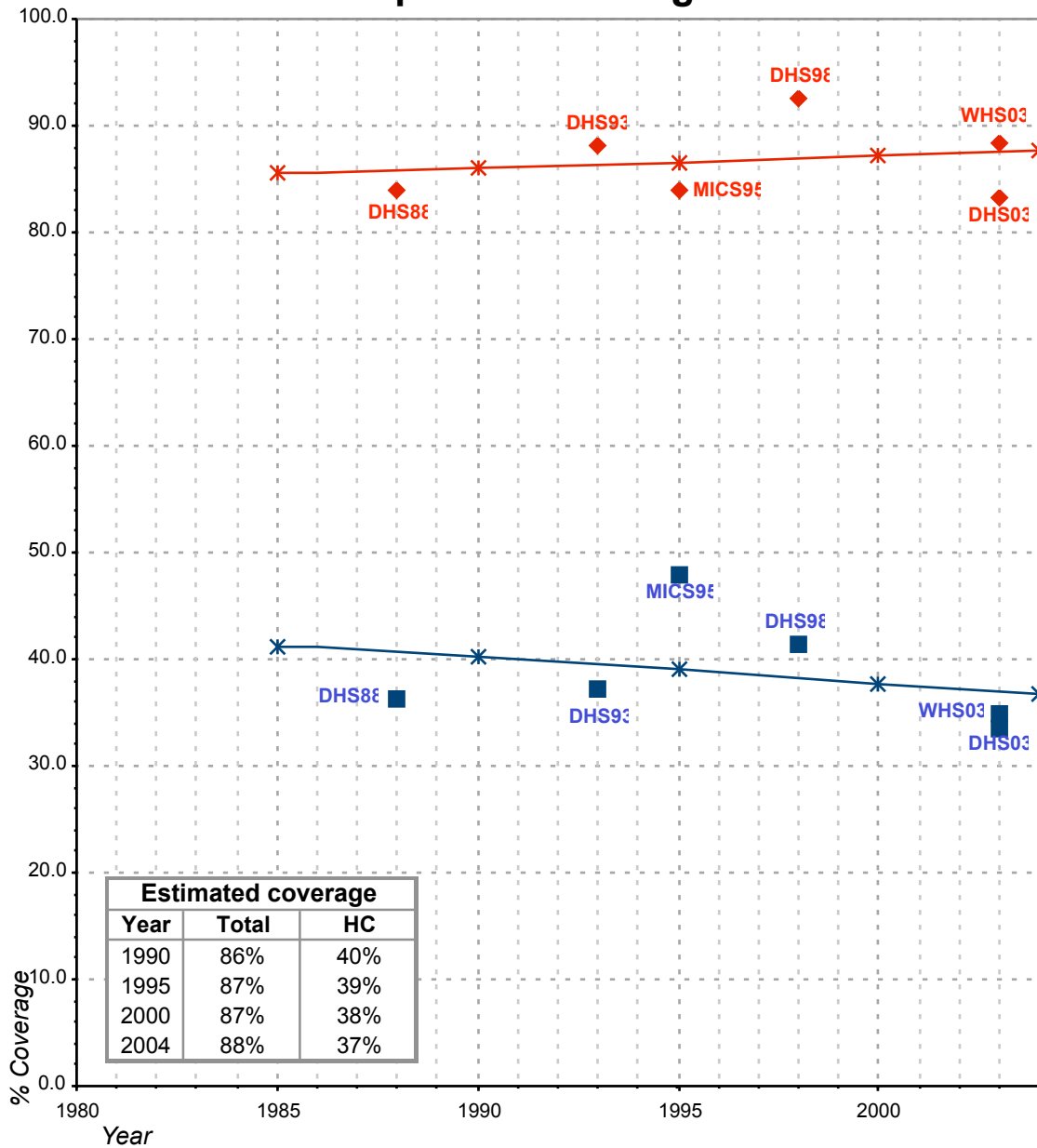
Source: World Health Survey, WHO, 2003.

FORM-6/WHO 1999		
<small>(Population in thousands)</small>		
WATER	Urban	Rural
Population served with household connection	2 100	
Population without household connection but with reasonable access to a public water point	2 700	
Total population served	4 800	4 487
Total population unserved	1 900	3 874
Total population	6 700	8 361
<small>(Total population for urban water does not match total population for urban sanitation)</small>		
Access to improved drinking water sources	72%	54%
% House connections	31%	

Source: Global Water Supply and Sanitation Assessment 2000. Water Supply and Sanitation Sector Questionnaire - 1999 (Form 6 - sent to WHO)

Ghana			DRINKING WATER							
			URBAN				RURAL			
			HC		Total		HC		Total	
Source	Code	Year	Used for estimates	Not used for estimates	Used for estimates	Not used for estimates	Used for estimates	Not used for estimates	Used for estimates	Not used for estimates
The International Drinking Water Supply and Sanitation Decade. Review of National Baseline Data (as at December 1980). WHO 1984	WHO80	1980		26.0		72.0				33.0
The International Drinking Water Supply and Sanitation Decade. Review of National Progress (as at December 1983). WHO 1986.	WHO83	1983		25.0		72.0				39.0
The International Drinking Water Supply and Sanitation Decade. Review of Mid-Decade Progress (as at December 1985). WHO 1987.	WHO85	1985		41.0		93.0				39.0
Source: Ghana Living standards Survey, 1988	LSS88	1988		28.6		36.4		1.0		36.0
Ghana Demographic and Health Survey 1988.	DHS88	1988	36.3		84.1		1.9		28.4	
The International Drinking Water Supply and Sanitation Decade. Review of National Progress (as at December 1988). WHO 1990.	WHO88	1988		42.0		93.0				39.0
The International Drinking Water Supply and Sanitation Decade. End of Decade Review (as at December 1990). WHO1992.	WHO90	1990		35.0		63.0				
Water Supply and Sanitation Sector Monitoring Report 1993 (Sector Status as of 31 December 1991)	JMP93	1991				93.0				93.0
Ghana Demographic and Health Survey 1993.	DHS93	1993	37.2		88.2		2.0		47.1	
Water Supply and Sanitation Sector Monitoring Report - 1996. Sector Status as of 31 December 1994. WHO/UNICEF 1996.	JMP96	1993				70.0				49.0
MICS Survey 1995	MICS95	1995	48.0		84.0		1.0		50.0	
Ghana Demographic and Health Survey 1998	DHS98	1998	41.4		92.6		3.5		54.6	
Global Water Supply and Sanitation Assessment 2000. Water Supply and Sanitation Sector Questionnaire - 1999. (Form 6 sent to WHO)	JMP99	1999		31.3		72.0				54.0
Ghana Demographic and Health Survey 2003.	DHS03	2003	33.4		83.4		1.9		54.3	
World Health Survey, WHO, 2003.	WHS03	2003	35.0		88.4		5.1		66.5	

Ghana - urban - Access to improved drinking water sources



Total improved access

Household connections (HC)

◆ Used for estimates

■ Used for estimates

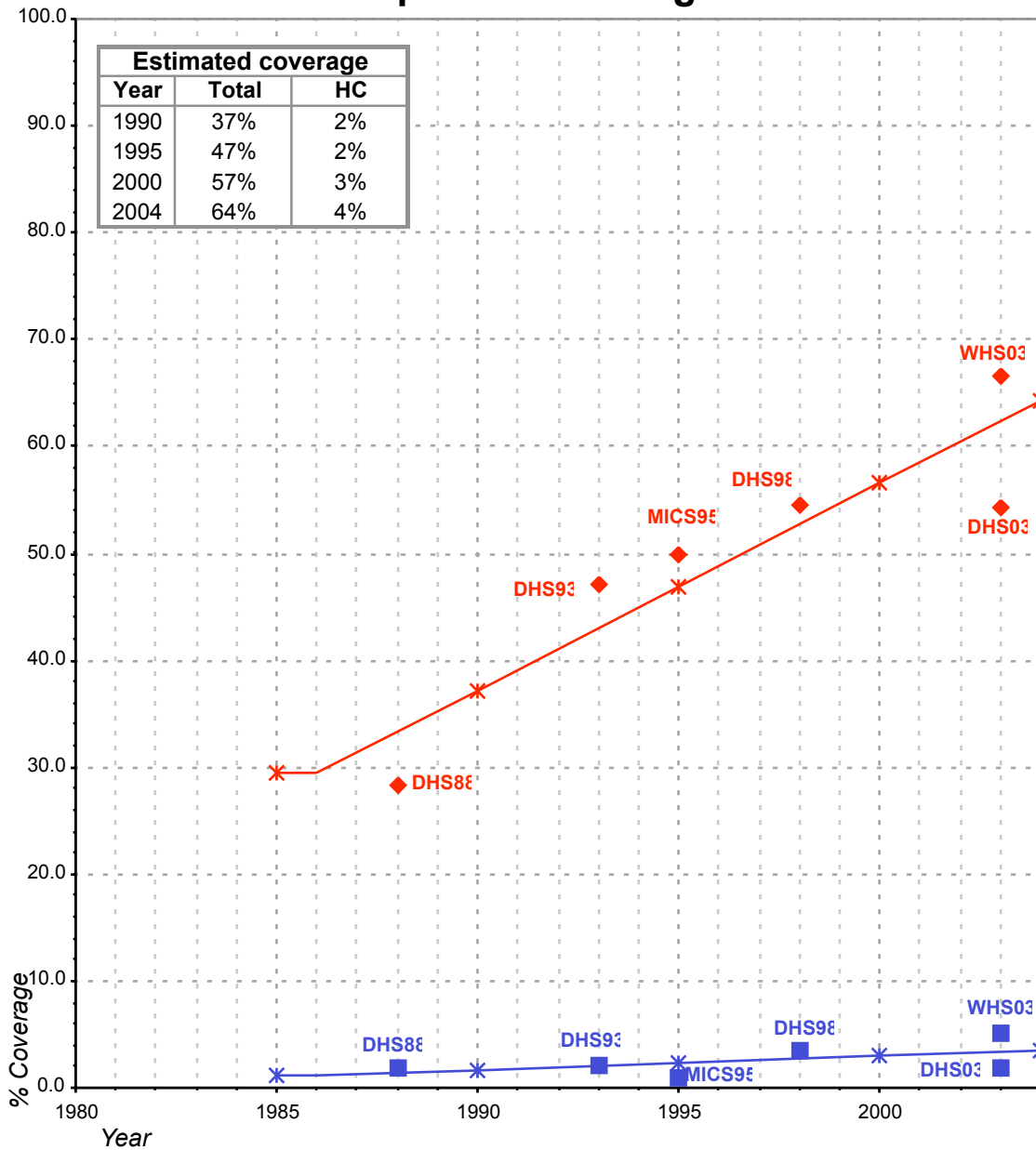
✱ Estimates

✱ Estimates

Total access :

Household connections :

Ghana - rural - Access to improved drinking water sources



◆ **Total improved access** ■ **Household connections (HC)**
◆ Used for estimates ■ Used for estimates
✱ Estimates ✱ Estimates

Total access :

Household connections :