



WHO / UNICEF

**Joint Monitoring Programme
for Water Supply and Sanitation**

Coverage Estimates

Improved Drinking Water

Updated in June 2006

Guatemala

Urban and Rural Water - Guatemala

Survey

DHS 1987		
WATER	Urban	Rural
Domestic connection	68,8	30,3
Community piped	0,4	2,9
Other piped source	5,0	5,8
Public tap	6,0	13,7
Well or cistern	7,2	24,7
River, irrigated channel or spring	2,7	19,7
Rainwater	0,3	0,3
Truckborne	0,6	0,4
Other source	9,2	2,4
TOTAL	100,0	100,0
All wells	7,2	24,7
Protected wells estimated at 50% of all wells	3,6	12,3
Improved water source (excl. wells & springs)	80,4	53,0
Improved water source (incl. wells & springs)	87,6	77,6
Access to improved drinking water sources (incl. % safe wells & springs)	84%	65%
% House connections	69%	30%

Source: Guatemala DHS, 1987

DHS 1995		
WATER	Urban	Rural
Domestic connection to network (Acueducto)	61,3	40,6
Public standpoint	5,2	6,9
Other piped source	3,6	13
Well with pump	6,1	17,7
Public trough	0,8	2,3
River, irrigation channel, spring	1,8	14,7
Truck, water carrier	2,2	0,3
Bottled water*	18,2	2,5
Rainwater	0,1	1,3
Other	0,6	0,7
TOTAL	99,9	100
Access to improved drinking water sources	95%	82%
% House connections	80%	43%

Source: Guatemala DHS 1995

DHS 1999			
WATER	Urban	Rural	Total
Red publica (acueducto)	59,1	51	54,7
Agua embotellada*	25,5	7,1	15,4
Pozo mecanica	7,6	20,8	14,9
Rio/acequia/manantial	2,1	9,8	6,3
Chorro publico	3,3	4,8	4,1
Otra fuente por tuberia	1	4,1	2,7
Pila/tanque aguateria	0,4	1,6	1
Agua lluvia	0	0,2	0,1
Camion tanque aguatero	0,2	0,1	0,2
Otra fuente	0,6	0,5	0,6
Sin informacion	0,1	0	0
TOTAL	99,9	100	100
Access to improved drinking water sources	97%	88%	92%
% House connections	85%	58%	70%

Source: Guatemala DHS 1998/99

ENSMI 2002		
WATER	Urban	Rural
Red publica	49,8	44,2
Chorro publico	2,5	3,7
Otra fuente por tuberia	5,5	13,2
Agua de lluvia	0,4	1,4
Agua embotellada	31,3	10
Pila publica	0,6	1,8
Pozo	5,8	16,1
Rio	1,6	8,3
Camion o tanque	1,7	0,2
Otro	0,9	1,2
TOTAL	100	100
Protected wells estimated, based on WHS03	5,1	13,3
Access to improved drinking water sources	95%	86%
% House connections	81%	54%

Source: Encuesta Nacional de Salud Materno Infantil, 2002

* Bottled water is considered an improved drinking water source in Guatemala, as it is mainly used as a better alternative than tap water.

WHS 2003		
WATER	Urban	Rural
Piped water through house connection or yard	93,6	68,0
Public standpipe	2,5	3,2
Protected tube well or bore hole	2,3	13,3
Protected dug well or protected spring	0,5	4,8
Rainwater (into tank or cistern)	0,1	0,4
Unprotected dug well or spring	0,4	3,9
Water taken directly from pond-water or stream	0,2	6,1
Tanker-truck, vendor	0,5	0,2
TOTAL	100,0	100,0
Ratio of protected /all wells and springs	0,87	0,82
Access to improved drinking water sources	99%	90%
% House connections	94%	68%

Source: World Health Survey, WHO, 2003.

Census 1994		
(Households in thousands)		
WATER	Urban	Rural
Red publica, chorro de uso exclusivo	387,8	255,6
Red publica, chorro para varios hogares	105,3	39,1
Red publica, chorro publico	25,7	65,0
Red privada, chorro de uso exclusivo	24,9	115,6
Red privada, chorro para varios hogares	6,7	24,5
Red privada, pozo red uso exclusivo	5,7	33,8
Pozo	23,0	303,1
Rio, lago o manantial	5,6	123,5
Camion (cisterna, tonel)	9,8	12,0
Otro	9,6	15,7
Total households	604,1	987,9
All wells	23,0	303,1
Estimation of protected wells based on WHS03	20,0	249,6
Improved water source (excl. wells & springs)	556,1	533,6
Improved water source (incl. wells & springs)	579	837
drinking water sources (incl. % safe wells & springs)	95%	79%
% House connections	68%	38%

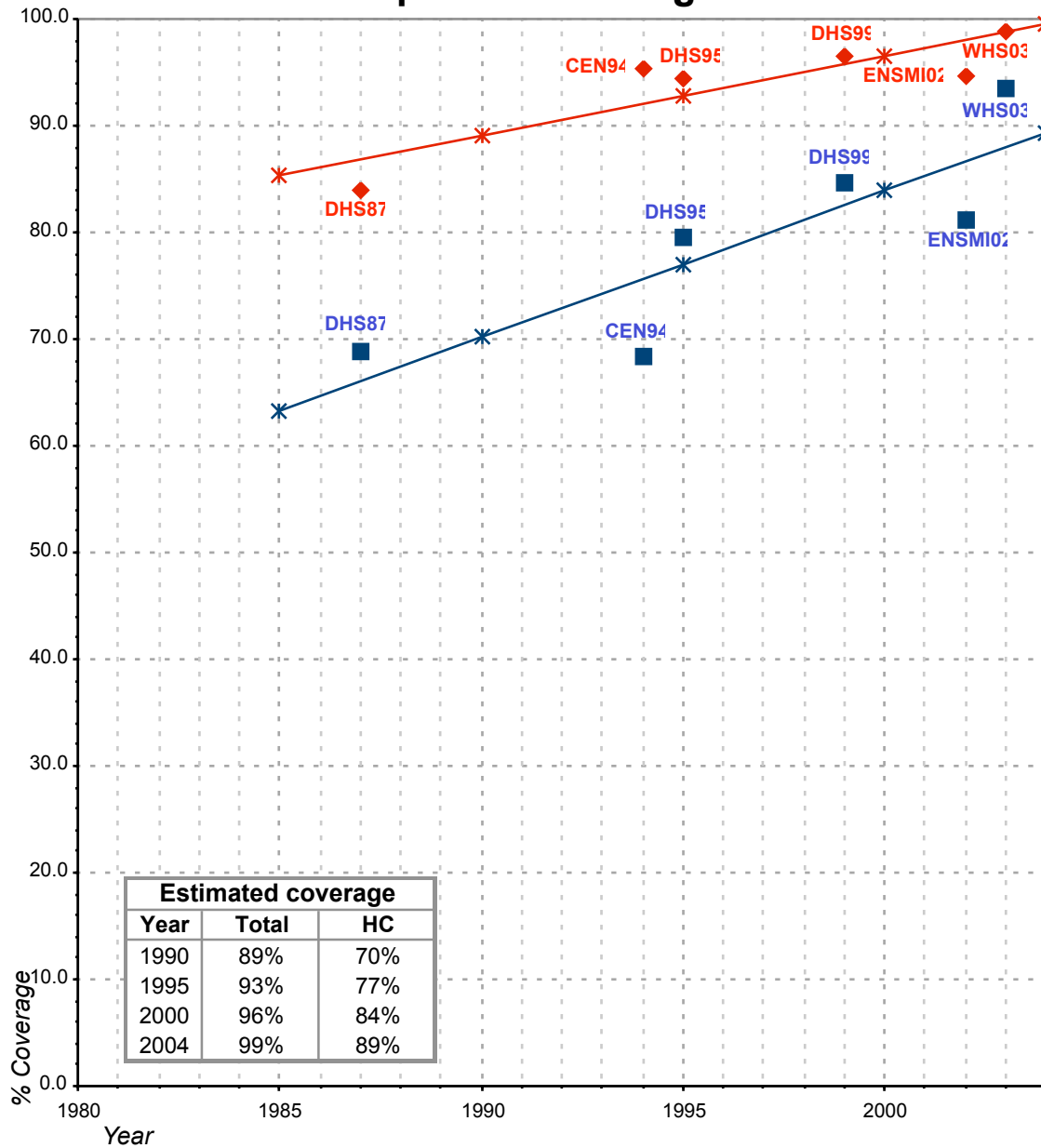
Source: X Demographic Census, April 1994

Estimate 1999		
(Population in thousands)		
WATER	Urban	Rural
Population served with household connection	2991	2421
Population without household connection but with reasonable access to a public water point	443	1614
Total population served	3434	4035
Total population unserved	355	3174
Total population	3789	7209
Access to improved drinking water sources	91%	56%
% House connections	79%	34%

Source: Global Water Supply and Sanitation Assessment 2000. Water Supply and Sanitation Sector Questionnaire - 1999 (Form

Guatemala			DRINKING WATER							
			URBAN				RURAL			
			HC		Total		HC		Total	
Source	Code	Year	Used for estimates	Not used for estimates	Used for estimates	Not used for estimates	Used for estimates	Not used for estimates	Used for estimates	Not used for estimates
The International Drinking Water Supply and Sanitation Decade. Review of National Baseline Data (as at December 1980). WHO 1984	WHO80	1980		51.0		89.0				18.0
The International Drinking Water Supply and Sanitation Decade. Review of National Progress (as at December 1983). WHO 1986.	WHO83	1983		57.0		90.0				26.0
The International Drinking Water Supply and Sanitation Decade. Review of Mid-Decade Progress (as at December 1985). WHO 1987.	WHO85	1985		63.0		89.0				39.0
Guatemala Demographic and Health Survey 1987	DHS87	1987	68.8		84.0		30.3		65.3	
The International Drinking Water Supply and Sanitation Decade. Review of National Progress (as at December 1988). WHO 1990.	WHO88	1987		73.0		91.0				41.0
The International Drinking Water Supply and Sanitation Decade. End of Decade Review (as at December 1990). WHO1992.	WHO90	1990		78.0		92.0				43.0
X Demographic Census, April 1994	CEN94	1994	68.3		95.4		37.6		79.3	
Guatemala Demographic and Health Survey 1995	DHS95	1995	79.5		94.5		43.1		82.0	
Guatemala DHS 1998/99	DHS99	1999	84.6		96.5		58.1		88.0	
Global Water Supply and Sanitation Assessment 2000. Water Supply and Sanitation Sector Questionnaire - 1999. (Form 6 sent to WHO)	JMP99	1998		76.0		87.0		29.0		51.0
World Health Survey, WHO, 2003.	WHS03	2003	93.6		98.9		68.0		89.8	
Encuesta Nacional de Salud Materno Infantil, 2002	ENSMI02	2002	81.1		94.6		54.2		85.8	

Guatemala - urban - Access to improved drinking water sources



Total improved access

◆ Used for estimates

✱ Estimates

Household connections (HC)

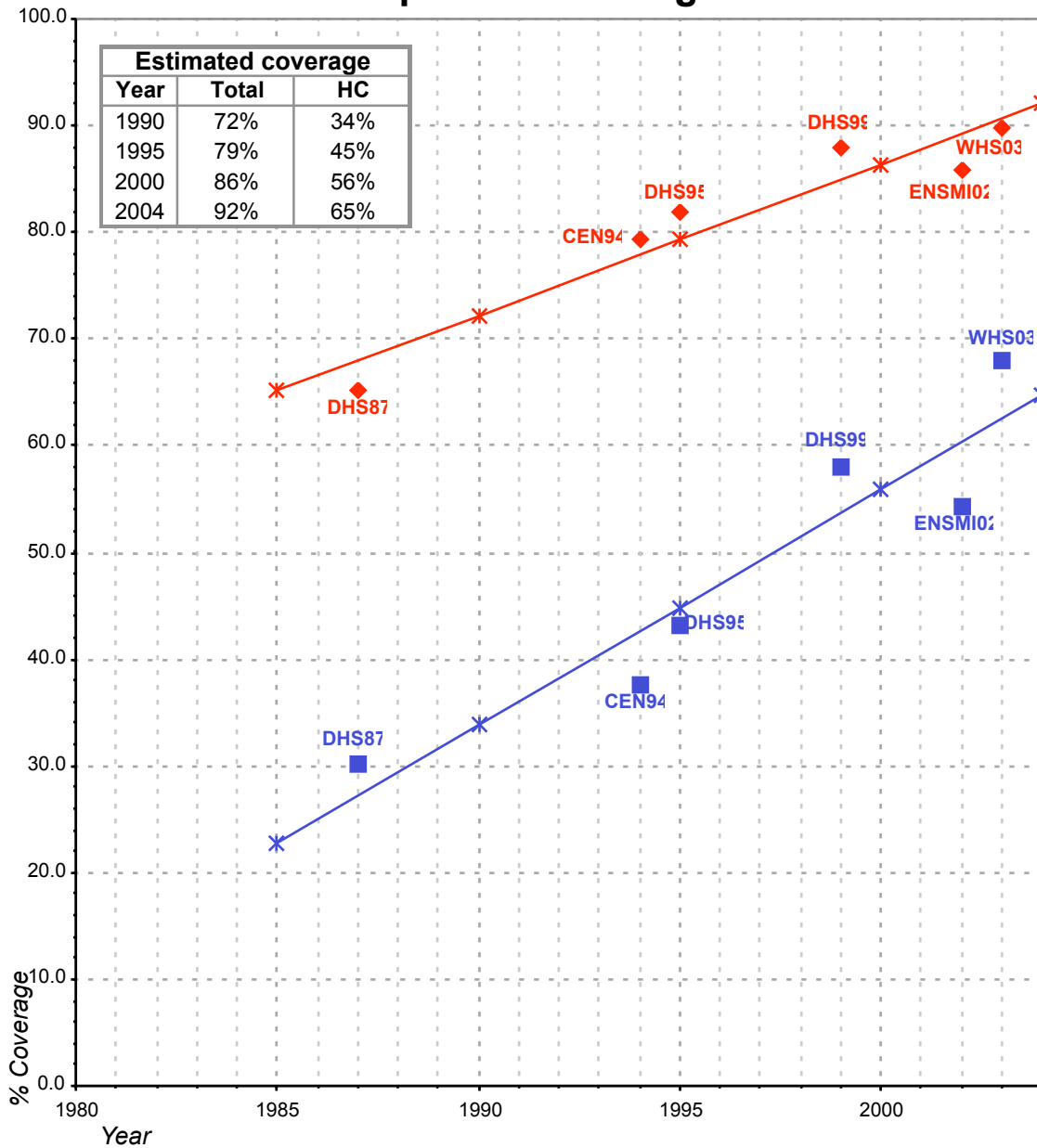
■ Used for estimates

✱ Estimates

Total access : Bottled water is considered an improved drinking water source in Guatemala, as it is m a better alternative than tap water.

Household connections : The amount of bottled water users has been added to hou

Guatemala - rural - Access to improved drinking water sources



Total improved access

Household connections (HC)

◆ Used for estimates

■ Used for estimates

✱ Estimates

✱ Estimates

Total access : Bottled water is considered an improved drinking water source in Guatemala, as it is m a better alternative than tap water.
Household connections : The amount of bottled water users has been added to hou