



WHO / UNICEF

**Joint Monitoring Programme
for Water Supply and Sanitation**

Coverage Estimates
Improved Drinking Water

Updated in June 2006

Haiti

Urban and Rural Water - Haiti

Surveys		
DHS 1994		
WATER	Urban	Rural
Private Tap	28.7	1.8
Public Standpipe	21.1	26.5
Private Well	4.1	2.9
Public Well	5.5	6.9
Spring	3.5	51.6
River/Lake	2	8.7
Tanker	3.1	0
Vendor	26	0.3
Other	6.1	1.3
TOTAL	100.1	98.4
All Well & Spring Water	13.1	61.4
Protected Spring & Well estimated at DHS00 proportion	6.0	18.1
Improved Drinking Water Excluding Well & Spring	49.8	28.3
Improved Drinking Water Including 100% Well & Spring	62.9	89.7
proportion of vendor from public standpipe+vendor	0.55	0.01
Access to improved drinking water sources	56%	46%
% House connections	29%	2%

Source: Haiti Demographic and Health Survey, Haiti 1994.

Census		
Census 1982		
(Population in thousands)		
WATER	Urban	Rural
Household connections	300	72
Public standpipe	220	1063
Protected private well	43	116.3
Protected spring	52	28
Cistern truck tanker	32.3	0
Rainwater collection	64	52
Not specified	330.802	2679.787
Total population (1982)	1042.102	4011.087
Total population served	679	1331.3
Access to improved drinking water sources	65%	33%
% House connections	29%	2%

Source: National census 1982 as recorded on the Global Water Supply and Sanitation Assessment 2000. Water Supply and Sanitation Sector Questionnaire -

Estimate		
FORM-6/WHO 1999		
(Population in thousands)		
WATER	Urban	Rural
Population served with household connection	380	1200
reasonable access to a public water point	857	1008
Total population served	1237	2208
Total population unserved	1296	2751
Total population	2533	4959
Access to improved drinking water sources	49%	45%
% House connections	15%	24%

Source: Global Water Supply and Sanitation Assessment 2000. Water Supply and Sanitation Sector Questionnaire - 1999. (Form 6 sent to WHO)

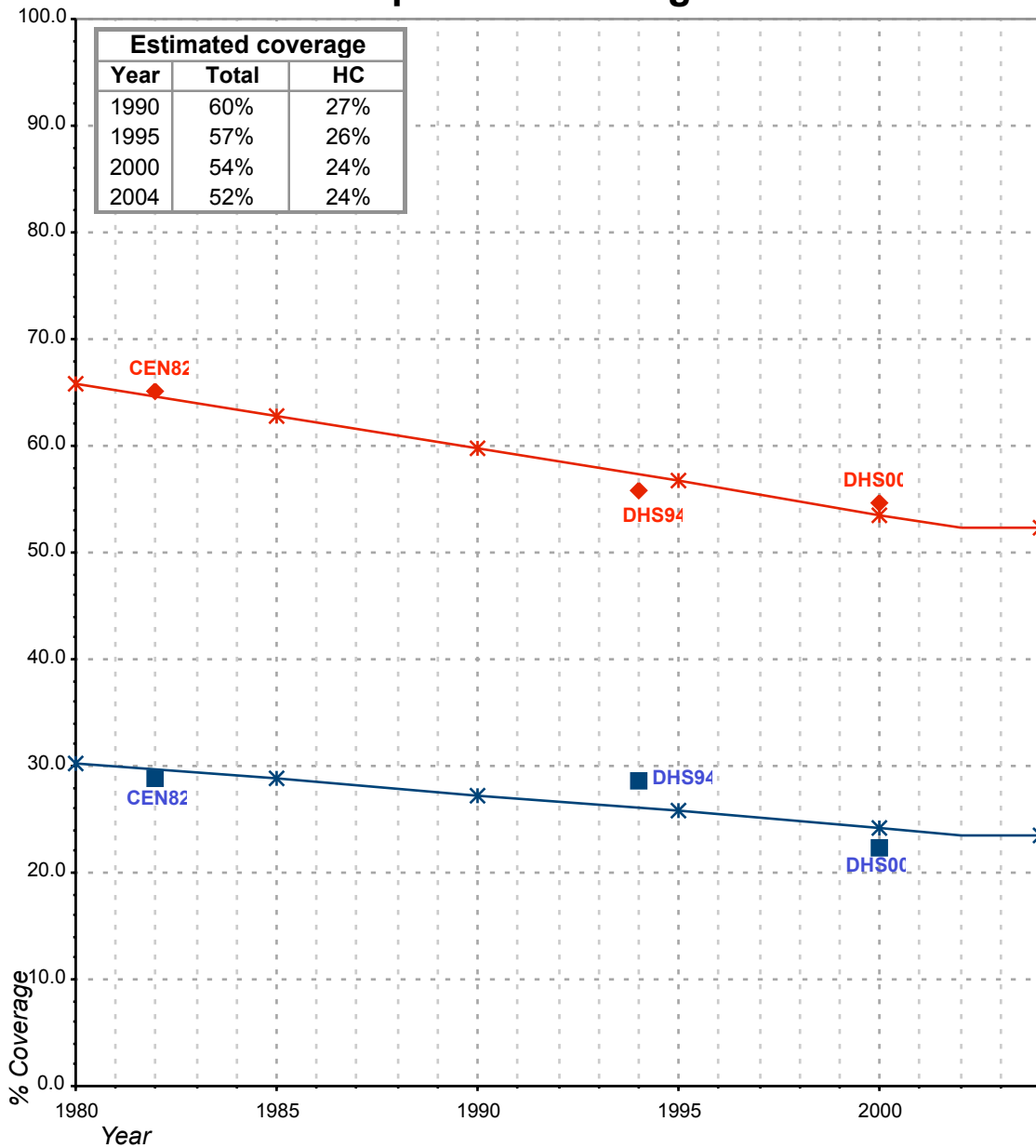
DHS 2000		
WATER	Urban	Rural
Robinet dans logement/cour	22.4	3.8
Puits protégé dans la cour	1.4	3
Puits protégé public	2.9	3.3
Source protégée	0.7	10.2
Eau de pluie	0.3	2.2
Fontaine publique/robinet du voisin/eau du robinet achetée	60	32.2
Puits ouvert dans la cour	1.4	0.9
Puits ouvert public	2.8	4.5
Source non protégée	1.4	31
Fleuve, rivière	0.3	5.1
Canal/Lac/Mare	0.5	3.7
Vendeur d'eau	2.6	0
Camion citerne	1.1	0
Eau en bouteille	2.1	0.1
TOTAL	99.9	100
proportion of vendor from public standpipe+vendor	0.04	0.00
Estimation of "Fontaine publique/robinet du voisin", not considering "eau du robinet achetée", based on ratio from DHS94	26.9	31.8
Proportion de puits protégés	0.51	0.54
Proportion de sources protégées	0.33	0.25
Access to improved drinking water sources	55%	54%
% House connections	22%	4%

Source: Enquête Mortalité, Morbidité, et Utilisation des Services, Haiti, 2000

Cistern truck tanker' earlier considered "improved"

Haiti			DRINKING WATER							
			URBAN				RURAL			
			HC		Total		HC		Total	
Source	Code	Year	Used for estimates	Not used for estimates	Used for estimates	Not used for estimates	Used for estimates	Not used for estimates	Used for estimates	Not used for estimates
Haiti 1982 Census as reported in: Global Water Supply and Sanitation Assessment 2000. Water Supply and Sanitation Sector Questionnaire - 1999. (Form 4 sent to WHO)	CEN82	1982	28.8		65.2		1.8		33.2	
The International Drinking Water Supply and Sanitation Decade. Review of National Progress (as at December 1983). WHO 1986.	WHO83	1983		31.0		58.0				25.0
The International Drinking Water Supply and Sanitation Decade. Review of Mid-Decade Progress (as at December 1985). WHO 1987.	WHO85	1985		32.0		59.0				30.0
The International Drinking Water Supply and Sanitation Decade. Review of National Progress (as at December 1988). WHO 1990.	WHO88	1988		30.0		55.0				36.0
The International Drinking Water Supply and Sanitation Decade. End of Decade Review (as at December 1990). WHO1992.	WHO90	1990		16.0		56.0				35.0
Haiti Demographic and Health Survey, Haiti 1994.	DHS94	1994	28.7		55.8		1.8		46.4	
Global Water Supply and Sanitation Assessment 2000. Water Supply and Sanitation Sector Questionnaire - 1999. (Form 6 sent to WHO)	JMP99	1998		15.0		49.0		24.2		45.0
Enquête Mortalité, Morbidité, et Utilisation des Services, Haïti, 2000	DHS00	2000	22.4		54.6		3.8		54.3	

Haiti - urban - Access to improved drinking water sources



Total improved access

Household connections (HC)

◆ Used for estimates

■ Used for estimates

✱ Estimates

✱ Estimates

Total access :

Household connections :

Haiti - rural - Access to improved drinking water sources

