



WHO / UNICEF

**Joint Monitoring Programme
for Water Supply and Sanitation**

Coverage Estimates
Improved Sanitation

Updated in June 2006

Liberia

Liberia

Survey

DHS	1986	
	Urban	Rural
SANITATION		
Flush	26.7	5.72
Outside Private	35.69	23.32
Outside Public	26	6.81
No Facilities	10.91	63.92
Other	0.49	0.21
Missing	0.22	0.02
TOTAL	100	100
ADEQUATE SANITATION	62%	29%

Source: Domestic and Household Survey, Liberia, 1986.

MICS	1996	
	Urban	Rural
INSUFFICIENT DATA		
SANITATION		
TOTAL		
ADEQUATE SANITATION		

Source: Multiple Indicator Cluster Survey, Liberia, 1996.

DHS	2000	
	Urban	Rural
SANITATION		
Flush toilet	29.8	1.9
Latrine	41.5	15.8
Others	24.4	81.2
No Facilities/Bush	4.3	1.1
50% of latrines considered improved	20.8	7.9
TOTAL	121	108
Access to improved sanitation	51%	10%

Source: Domestic and Household Survey, Liberia, 1986.

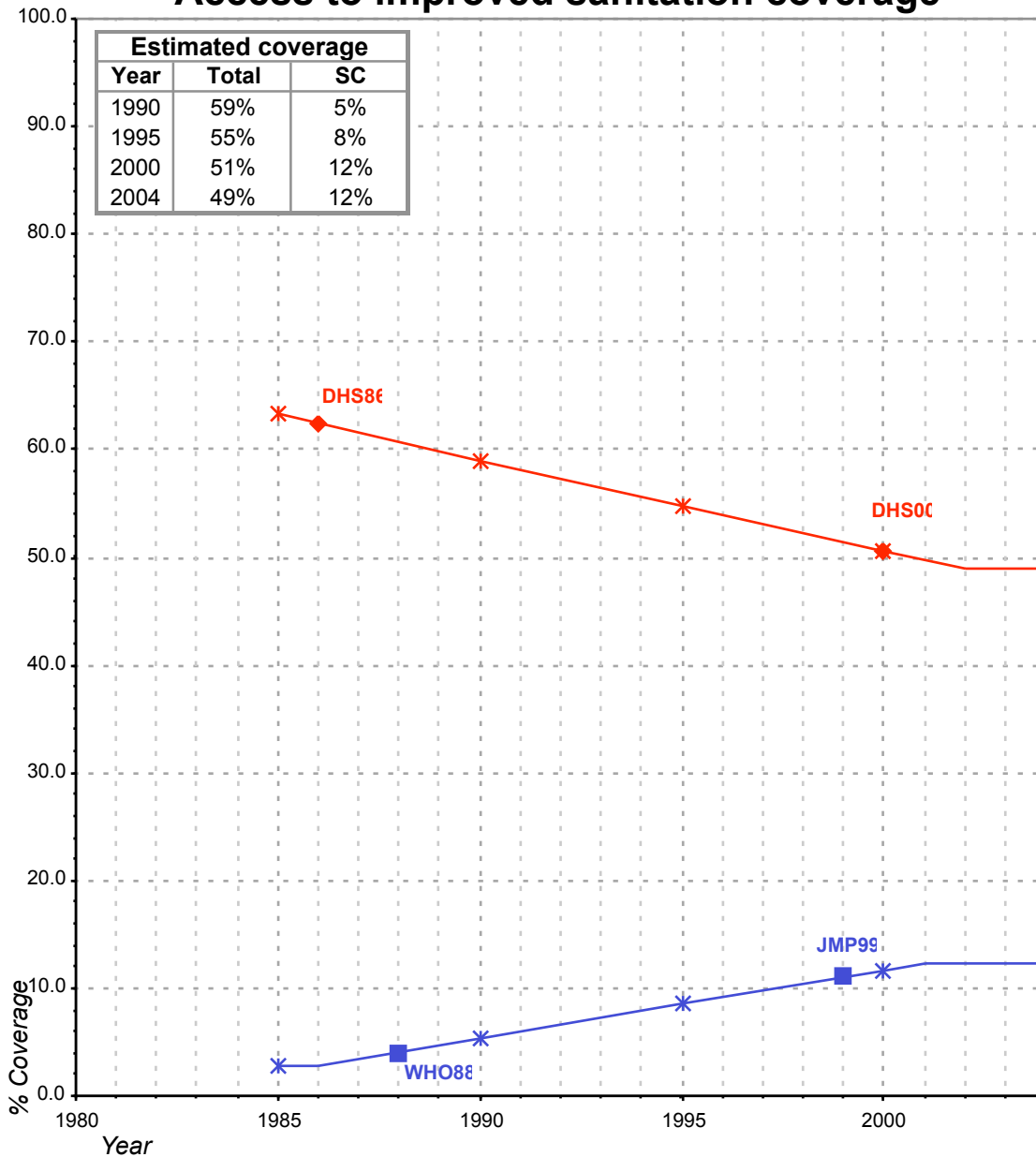
Estimate

FORM6/WHO	1999	
	Urban	Rural
(Population in thousands)		
SANITATION		
Population served with household connections to conventional sewers	221	DATA UNCLEAR
Population without household connections but served with adequate, private or shared on-site system	1'182	
Total population served	1'403	
Total population unserved	597	
Total population	2'000	
Population with Adequate Sanitation	70%	
% House connections	11%	

Source: Global Water Supply and Sanitation Assessment 2000. Water Supply and Sanitation Sector Questionnaire - 1999. Form 6 sent to WHO.

Liberia			SANITATION							
			URBAN				RURAL			
			HC		Total		HC		Total	
Source	Code	Year	Used for estimates	Not used for estimates	Used for estimates	Not used for estimates	Used for estimates	Not used for estimates	Used for estimates	Not used for estimates
The International Drinking Water Supply and Sanitation Decade. Review of National Progress (as at December 1983). WHO 1986.	WHO83	1983		24.0						20.0
The International Drinking Water Supply and Sanitation Decade. Review of Mid-Decade Progress (as at December 1985). WHO 1987.	WHO85	1985		6.0						2.0
Liberian Demographic and Health Survey 1986.	DHS86	1986			62.4				29.0	
The International Drinking Water Supply and Sanitation Decade. Review of National Progress (as at December 1988). WHO 1990.	WHO88	1988	4.0							8.0
Water Supply and Sanitation Sector Monitoring Report - 1996. Sector Status as of 31 December 1994. WHO/UNICEF 1996.	JMP96	1994				38.0				2.0
Multiple Indicator Cluster Survey, Liberia, 1996.	MICS95	1995								
Global Water Supply and Sanitation Assessment 2000. Water Supply and Sanitation Sector Questionnaire - 1999. (Form 6 sent to WHO)	JMP99	1999	11.1			70.2				
Domestic and Household Survey, Liberia, 2000	DHS00	2000			50.6				9.8	

Liberia - urban - Access to improved sanitation coverage



◆ **Total improved access** ■ **Sewerage connections (SC)**
◆ Used for estimates ■ Used for estimates
✱ Estimates ✱ Estimates

Total access :
Sewerage connections :

Liberia - rural - Access to improved sanitation coverage

