



WHO / UNICEF

**Joint Monitoring Programme
for Water Supply and Sanitation**

Coverage Estimates
Improved Sanitation

Updated in June 2006

Mali

Mali

Survey

DHS	1987	
	Urban	Rural
SANITATION		
WC / Flush	2.6	0.1
Latrine	92.2	62.5
No Facilities	2.4	32.9
Other	2.6	4.3
Missing	0.2	0.2
TOTAL	100	100
Improved	46.1	31.3
Private WC based on ratio DHS96	1.1	0.1
ADEQUATE SANITATION	47%	31%
Estimation of sewerage connections	1%	0%

Source: Demographic and Health Survey, Mali, 1987.

DHS	1996	
	Urban	Rural
SANITATION		
Private Pour-Flush	1.3	0.1
Shared Pour-Flush	1.7	0
Simple Latrine/Pit	75	56.1
Improved Latrine/Pit	15.8	4
No Facilities	5.7	39.3
Other/Not Defined	0.5	0.5
TOTAL	100	100
50% of latrines considered improved	37.5	28.1
Ratio private pour flush / all pour flush	0.43	1.00
ADEQUATE SANITATION	55%	32%

Source: Demographic and Health Survey, Mali, 1995-96.

DHS	2001	
	Urban	Rural
SANITATION		
Chasse d'eau avec évacuation	13.9	2.8
Latrines améliorées	19	6.3
Fosse/latrines en plein air	64.8	60.5
Nature/Pas de toilette	2.3	30.1
Autre/Non déterminé	0	0
TOTAL	100	100
50% of latrines considered improved	32.4	30.3
Private "Chasse d'eau à évacuation" based on DHS96	6.0	2.8
Access to improved sanitation	57%	39%
Estimation of sewerage connections	6%	0%

Source: Mali, Enquête démographique et de santé, 2001.

WHS	2003	
	Urban	Rural
Preliminary data		
SANITATION		
Private domestic connection to sewage system	2.3	0.3
Shared domestic connection to sewage system	0.4	0.1
Private flush to septic tank	1.6	0.3
Shared flush to septic tank	0.2	0.1
Private pour flush latrine	0.8	0.3
Shared pour flush latrine	0.2	0.7
Private covered dry latrine (with privacy)	25.3	13.3
Shared covered dry latrine (with privacy)	3.6	3.3
Uncovered dry latrine (without privacy)	54.5	55.0
Bucket latrine (where fresh excreta are manually removed)	2.9	0.6
No facilities (open defecation)	3.6	24.3
Other	4.7	1.9
TOTAL	100.0	100.0
Ratio of private flush	0.85	0.50
Ratio of private improved among latrines	0.30	0.19
Ratio of "Private domestic connection to sewage" among all flush	0.42	0.18
% Private improved sanitation	30%	14%
% Private sewerage connections	2%	0%

Source: World Health Survey, WHO, 2003.

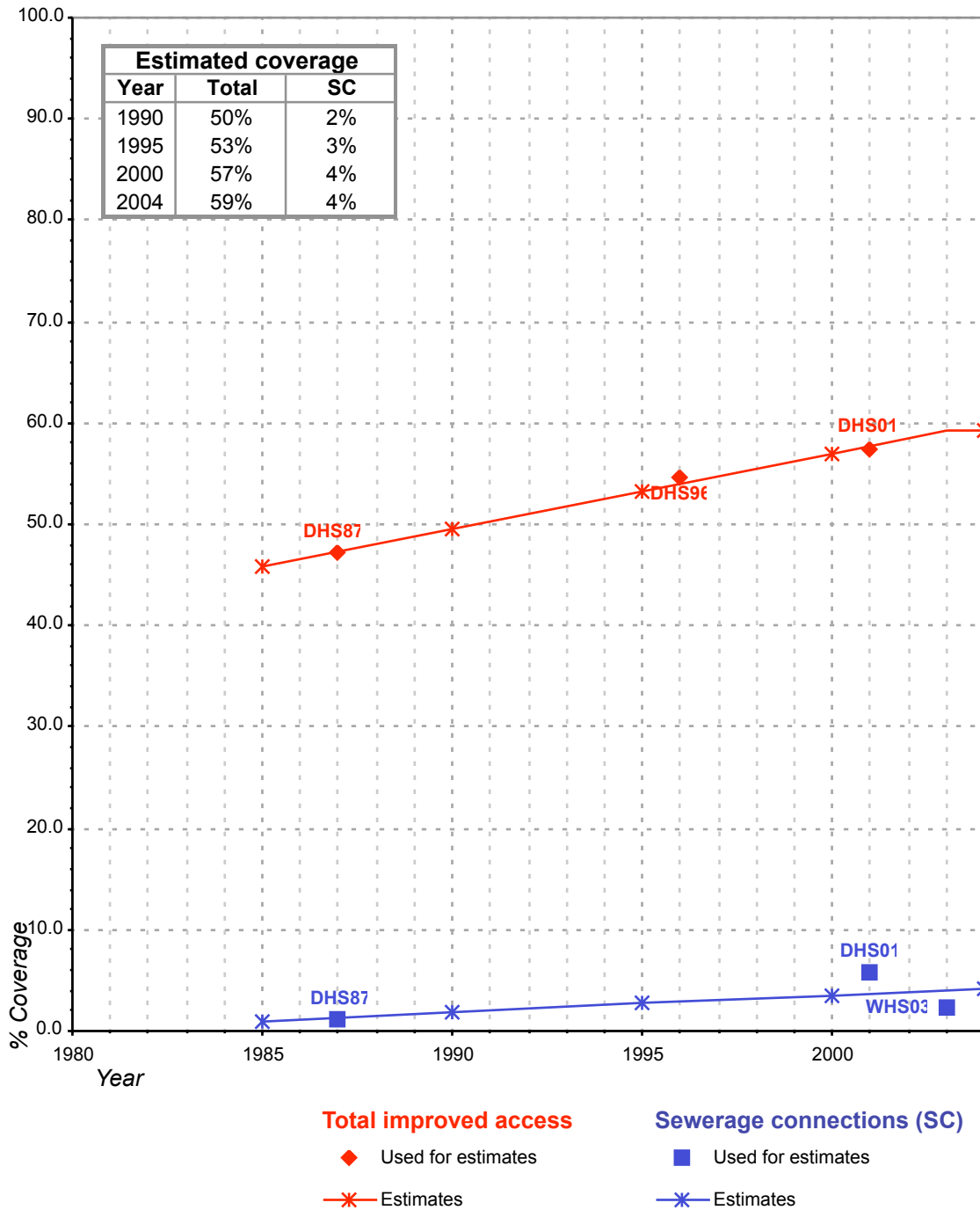
Estimate

FORM6/WHO	1999	
	Urban	Rural
SANITATION		
Population served with household connections to conventional sewers		
Population without household connections but served with adequate, private or shared on-site system		
Total population served	1'255.00	273.68
Total population unserved	284.30	6'570.62
Total population	1'539.30	6'844.30
Population with adequate sanitation	82%	4%

Source: Global Water Supply and Sanitation Assessment 2000. Water Supply and Sanitation Sector Questionnaire - 1999. (Form 6 sent to WHO)

Mali			SANITATION							
			URBAN				RURAL			
			HC		Total		HC		Total	
Source	Code	Year	Used for estimates	Not used for estimates	Used for estimates	Not used for estimates	Used for estimates	Not used for estimates	Used for estimates	Not used for estimates
The International Drinking Water Supply and Sanitation Decade. Review of National Baseline Data (as at December 1980). WHO 1984	WHO80	1980		1.0		79.0				0.0
The International Drinking Water Supply and Sanitation Decade. Review of National Progress (as at December 1983). WHO 1986.	WHO83	1983		0.0		91.0				3.0
The International Drinking Water Supply and Sanitation Decade. Review of Mid-Decade Progress (as at December 1985). WHO 1987.	WHO85	1985		1.0		90.0				3.0
Mali Demographic and Health Survey 1987.	DHS87	1987	1.1		47.2		0.0		31.3	
The International Drinking Water Supply and Sanitation Decade. Review of National Progress (as at December 1988). WHO 1990.	WHO88	1988		1.0		94.0				5.0
The International Drinking Water Supply and Sanitation Decade. End of Decade Review (as at December 1990). WHO1992.	WHO90	1990		1.0		81.0				10.0
Water Supply and Sanitation Sector Monitoring Report 1993 (Sector Status as of 31 December 1991)	JMP93	1991								
Water Supply and Sanitation Sector Monitoring Report - 1996. Sector Status as of 31 December 1994. WHO/UNICEF 1996.	JMP96	1994				58.0				21.0
Mali Demographic and Health Survey 1995.	DHS96	1996			54.6				32.2	
Global Water Supply and Sanitation Assessment 2000. Water Supply and Sanitation Sector Questionnaire - 1999. (Form 6 sent to WHO)	JMP99	1999				82.0				4.0
Mali, Enquête démographique et de santé, 2001.	DHS01	2001	5.8		57.4		0.5		39.4	
World Health Survey, WHO, 2003	WHS03	2003	2.3			30.0	0.3			14.2

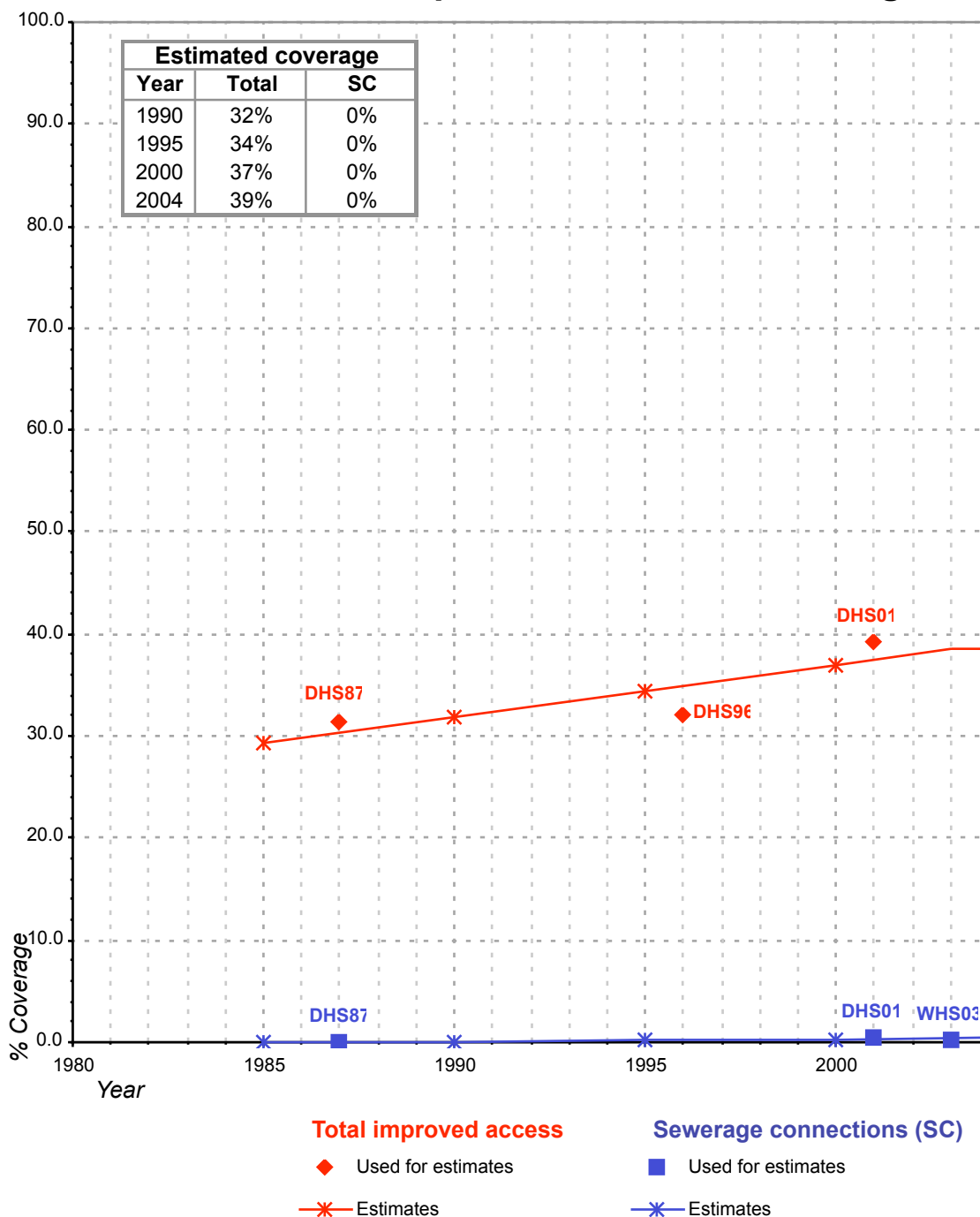
Mali - urban - Access to improved sanitation coverage



Total access :

Sewerage connections : WHS03 is preliminary data

Mali - rural - Access to improved sanitation coverage



Total access :

Sewerage connections : WHS03 is preliminary data