



WHO / UNICEF

**Joint Monitoring Programme
for Water Supply and Sanitation**

Coverage Estimates
Improved Sanitation

Updated in June 2006

Mauritania

Mauritania

Survey

MICS	1996	
SANITATION	Urban	Rural
Sewage System	5	0,8
Septic Tank/Pit	8,5	8,7
Covered Latrine	30,7	9,6
Uncovered Latrine	28,6	22,3
No Installation	23	48,6
Other	4,2	10
TOTAL	100	100
All Latrines	59,3	31,9
Ratio Covered Latrine	0,52	0,30
Access to improved sanitation	44%	19%
Sewerage connections	5%	1%

Source: Multiple Indicator Cluster Survey, Mauritania, 1996.

DHS	2001	
SANITATION	Urban	Rural
Chasse d'eau avec évacuation:	4,1	0,1
Latrines avec système d'évacuation:	8,1	0,4
Latrines sans système d'évacuation:	33,1	3,8
Fosse/Latrines rudimentaires:	30,9	21,4
Pas de toilettes/ nature	23,4	73,4
Autre	0,4	0,9
Total	100	100
Covered latrines, based on MICS96	33,1	7,6
Access to improved sanitation	45%	8%
Sewerage connections	4%	0%

Source: Mauritanie, Enquête démographique et de santé, 2001.

WHS	2003	
Preliminary data		
SANITATION	Urban	Rural
Private domestic connection to sewage system	17,4	1,7
Shared domestic connection to sewage system	1,9	0,9
Private flush to septic tank	26,3	2,4
Shared flush to septic tank	9,3	2,3
Private pour flush latrine	8,1	5,7
Shared pour flush latrine	3,1	4,2
Private covered dry latrine (with privacy)	9,1	5,4
Shared covered dry latrine (with privacy)	2,0	3,5
Uncovered dry latrine (without privacy)	5,9	4,4
Bucket latrine (where fresh excreta are manually removed)	2,5	4,4
No facilities (open defecation)	12,9	55,4
Other	1,5	9,9
TOTAL	100,0	100,0
Ratio of private sewerage among flush	0,32	0,24
Ratio of private among sewerage	0,90	0,66
Ratio of private among septic tank	0,74	0,51
Ratio of private among covered latrines	0,82	0,61
Ratio of private among flush	0,80	0,57
Ratio of private among pour flush latrines	0,72	0,58
Ratio of private covered among dry latrines	0,65	0,67
% Private improved sanitation	61%	15%
% Private sewerage connections	17%	2%

Source: World Health Survey, WHO, 2003.

EMIP 2004		
SANITATION	Urban	Rural
Chasse d'eau avec systeme d'evacuation	8,8	2,6
Latrine avec systeme d'evacuation	8,9	1,3
Latrine sans systeme d'evacuation	33,9	6,9
Fosse/ latrine rudimentaire	29,9	13,2
Pas de toilettes/ nature	17,9	75,2
Autre	0,6	0,9
Total	100,0	100,1
Covered latrines, based on MICS96	33,0	6,0
Access to improved sanitation	51%	10%
Sewerage connections	9%	3%

Source: Mauritanie, Enquête sur la Mortalité Infantile et le Paludisme, EMIP 2003-2004

Census		
CENSUS	1995	
(Population in thousands)		
SANITATION	Urban	Rural
Sewerage System	54,930	8,340
Septic Tank/Pit	93,380	90,740
Covered & Uncovered Latrine	651,490	332,700
Other	46,140	104,290
Not Specified	253,060	506,889
Total Population	1 099,000	1 042,959
Covered latrines, based on MICS96	337,3	100,1
Access to improved sanitation	44%	19%
Sewerage connections	5%	1%

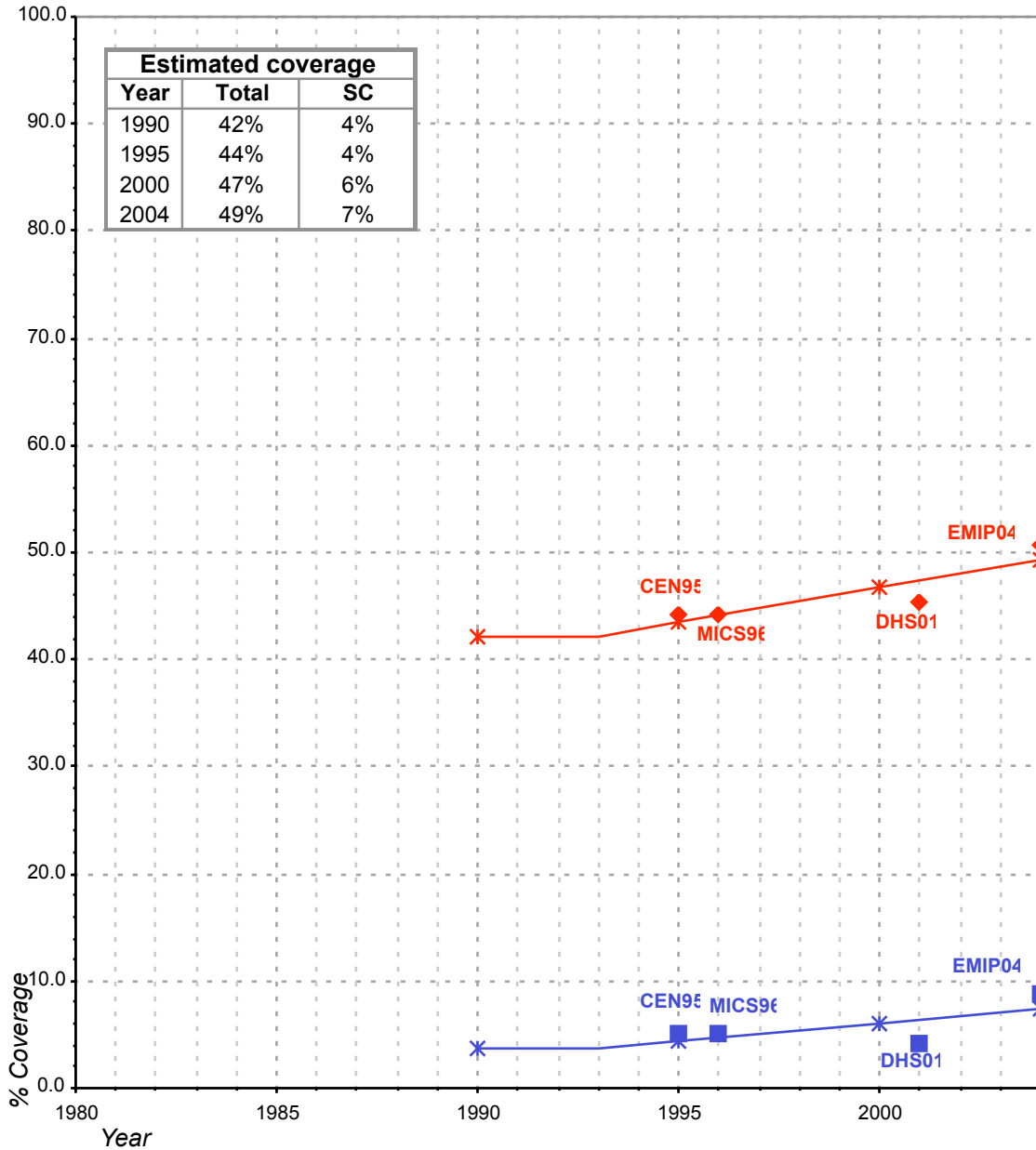
Source: 1995 National Census Data as recorded in Form 4 of the Global Water Supply and Sanitation Assessment 2000. Water Supply and

Estimate		
FORM6/WHO	1999	
(Population in thousands)		
SANITATION	Urban	Rural
Population served with household connections to conventional sewers but served with adequate, private or shared on-site system		
Total population served	533	219
Total population unserved	673	926
Total population	1 206	1 145
Access to improved sanitation	44%	19%

Source: Global Water Supply and Sanitation Assessment 2000. Water Supply and Sanitation Sector Questionnaire - 1999. Form 6 sent to WHO.

Mauritania			SANITATION							
			URBAN				RURAL			
			HC		Total		HC		Total	
Source	Code	Year	Used for estimates	Not used for estimates	Used for estimates	Not used for estimates	Used for estimates	Not used for estimates	Used for estimates	Not used for estimates
The International Drinking Water Supply and Sanitation Decade. Review of National Baseline Data (as at December 1980). WHO 1984	WHO80	1980		5.0		5.0				
The International Drinking Water Supply and Sanitation Decade. Review of National Progress (as at December 1983). WHO 1986.	WHO83	1983		4.0						0.0
The International Drinking Water Supply and Sanitation Decade. Review of Mid-Decade Progress (as at December 1985). WHO 1987.	WHO85	1985		3.0		8.0				
The International Drinking Water Supply and Sanitation Decade. Review of National Progress (as at December 1988). WHO 1990.	WHO88	1988		4.0		34.0				
Water Supply and Sanitation Sector Monitoring Report - 1996. Sector Status as of 31 December 1994. WHO/UNICEF 1996.	JMP96	1994								
National Census, Ministry of Economic Affairs & Development, Nouakchott, Mauritania, 1995.	CEN95	1995	5.0		44.2		0.8		19.1	
Multiple Indicator Cluster Survey, Mauritania 1996.	MICS96	1996	5.0		44.2		0.8		19.1	
Global Water Supply and Sanitation Assessment 2000. Water Supply and Sanitation Sector Questionnaire - 1999. (Form 6 sent to WHO)	JMP99	1999				44.0				19.0
Mauritanie, Enquête démographique et de santé, 2001.	DHS01	2001	4.1		45.3		0.1		8.1	
World Health Survey, WHO, 2003.	WHS03	2003		17.4		60.9		1.7		15.2
Enquête sur la Mortalité Infantile et le Paludisme, EMIP 2003-2004	EMIP04	2004	8.8		50.7		2.6		9.9	

Mauritania - urban - Access to improved sanitation coverage



Total improved access

◆ Used for estimates

* Estimates

Sewerage connections (SC)

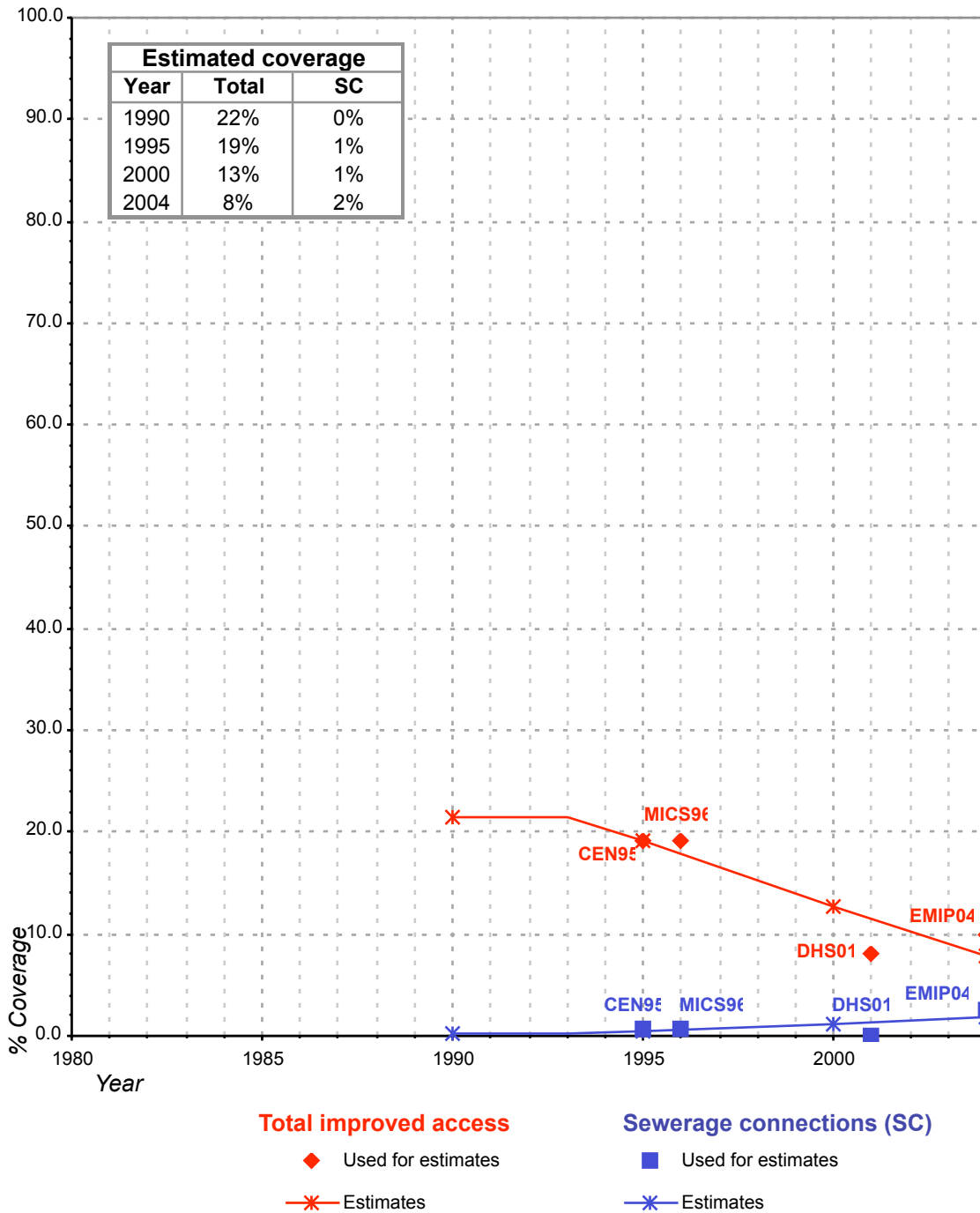
■ Used for estimates

* Estimates

Total access :

Sewerage connections :

Mauritania - rural - Access to improved sanitation coverage



Total access :
Sewerage connections :