



WHO / UNICEF

**Joint Monitoring Programme
for Water Supply and Sanitation**

Coverage Estimates
Improved Drinking Water

Updated in June 2006

Mauritania

Mauritania

Survey

MICS	1996	
	Urban	Rural
WATER		
Connection	22,4	6,6
Standpipe	6,4	11,7
Borehole	1,2	2,6
Lined Well with Parapet	3,5	19,4
Lined Well without Parapet	1,8	17,6
Simple Well	9,4	35
River	0	3,6
Vendor	53	0,9
Other	2,3	2,6
TOTAL	100	100
Total Wells	14,7	72
Ratio Wells with parapet	0,24	0,27
Estimation of simple wells being improved, based on DHS01	4,4	8,2
Safe Drinking Water	38%	49%
% House connections	22%	7%

Source: Multiple Indicator Cluster Survey, Mauritania, 1996.

DHS	2001	
	Urban	Rural
WATER		
Robinet dans le logement/cour	28,1	10,6
Fontaine publique/Robinet extérieur	24,2	9,3
Puits protégé dans la cour	3	1,7
Puits protégé/Forage public	1,2	11,2
Puits protégé extérieur à la cour	2,5	11,1
Source	0,1	2,3
Puits non protégé/traditionnel dans la cour	1,2	3,2
Puits non protégé/traditionnel extérieur	2,8	10,8
Puits non protégé/traditionnel public	2,3	27,8
Fleuve/Rivière/Mare/Lac	0,6	5,2
Revendeur des fontaines publiques	25,6	2,5
Camion Citerne	7,7	1,5
Autre/Non déterminé	0,8	2,7
TOTAL	100,1	99,9
Estimation: 50% de Source	0,05	1,15
Ratio Safe Wells	0,47	0,23
Access to improved drinking water sources	59%	45%
% House connections	28%	11%

Source: Mauritanie, Enquête démographique et de santé, 2001.

WHS	2003	
	Urban	Rural
Preliminary data		
WATER		
Piped water through house connection or yard	32,4	11,1
Public standpipe	32,0	15,8
Protected tube well or bore hole	2,5	15,6
Protected dug well or protected spring	3,2	19,5
Rainwater (into tank or cistern)	0,0	2,5
Unprotected dug well or spring	3,2	29,4
Water taken directly from pond-water or stream	6,6	2,3
Tanker-truck, vendor	20,2	3,8
TOTAL	100,0	100,0
Ratio of protected /all wells and springs	0,64	0,54
Access to improved drinking water sources	70%	65%
% House connections	32%	11%

Source: World Health Survey, WHO, 2003.

EMIP 2004		
WATER	Urban	Rural
Robinet dans le logement/cour	31,7	12,5
Fontaine publique/Robinet extérieur	19,4	7
Puits protégé dans la cour	1,5	1,5
Puits protégé/Forage public	1	9,9
Puits protégé extérieur à la cour	0,6	9,4
Source	0	3,9
Puits non protégé/traditionnel dans la cour	0,6	8,6
Puits non protégé/traditionnel extérieur	1,9	19,4
Puits non protégé/traditionnel public	2,1	17,2
Fleuve/Rivière/Mare/Lac	0,1	7,1
Revendeur des fontaines publiques	33,1	0,5
Camion CIterne	6,7	1,2
Autre/Non déterminé	1,4	1,7
TOTAL	100,1	99,9
Estimation: 50% de Source	0	1,95
Ratio Safe Wells	0,31	0,19
Access to improved drinking water sources	54%	42%
% House connections	32%	13%

Source: Mauritania, Enquête sur la Mortalité Infantile et le Paludisme, EMIP 2003-2004

Census		
CENSUS	1995	
(Population in thousands)		
WATER	Urban	Rural
Household Connection	246,0	63,0
Standpipe	70,0	122,0
Borehole	13,0	27,0
Private Well (Lined Well with or without Parapet)	58,0	386,0
Hand-dug Well (Simple Well)	103,0	365,0
Surface Water	0,0	36,0
Vendor	582,0	9,0
Other	25,0	27,0
Not Specified	1,6	8,0
Total Population	1 098,6	1 043,0
Population served (excluding wells)	329,0	212,0
Total Wells	161,0	751,0
Estimation of safe wells based on DHS96	13,8	104,0
% of Population Served Excl. Well	30%	20%
% of Population Served Incl. 100% Well	45%	92%
Estimation of simple wells being improved, based on DHS01	48,0	85,6
Safe Drinking Water	36%	39%
% House connections	22%	6%

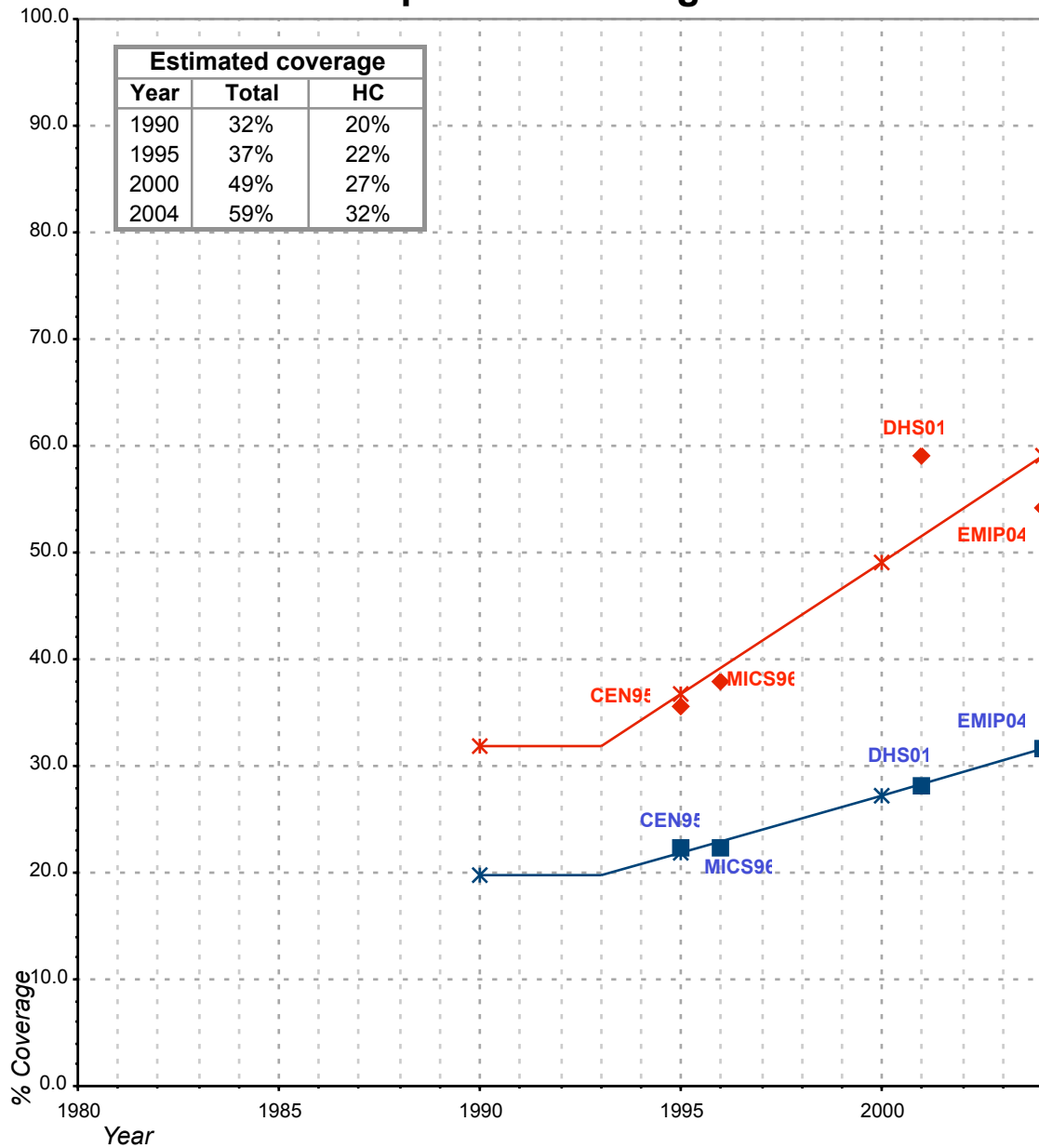
Source: 1995 National Census Data as recorded in Form 4 of the Global Water Supply and Sanitation Assessment 2000. Water Supply and Sanitation Sector Questionnaire - 1999.

Estimate		
FORM-6/WHO	1999	
(Population in thousands)		
WATER	Urban	Rural
Population served with household connection public water point		
Total population served	1 043	472
Total population unserved	163	673
Total population	1 206	1 145
Population with safe drinking water	86%	41%

Source: Global Water Supply and Sanitation Assessment 2000. Water Supply and Sanitation Sector Questionnaire - 1999. Form 6 sent to WHO.

Mauritania			DRINKING WATER							
			URBAN				RURAL			
			HC		Total		HC		Total	
Source	Code	Year	Used for estimates	Not used for estimates	Used for estimates	Not used for estimates	Used for estimates	Not used for estimates	Used for estimates	Not used for estimates
The International Drinking Water Supply and Sanitation Decade. Review of National Baseline Data (as at December 1980). WHO 1984	WHO80	1980		20.0		80.0				85.0
The International Drinking Water Supply and Sanitation Decade. Review of National Progress (as at December 1983). WHO 1986.	WHO83	1983		15.0		80.0				
The International Drinking Water Supply and Sanitation Decade. Review of Mid-Decade Progress (as at December 1985). WHO 1987.	WHO85	1985		15.0		73.0				
The International Drinking Water Supply and Sanitation Decade. Review of National Progress (as at December 1988). WHO 1990.	WHO88	1988		18.0		67.0				65.0
Water Supply and Sanitation Sector Monitoring Report - 1996. Sector Status as of 31 December 1994. WHO/UNICEF 1996.	JMP96	1994				84.0				69.0
National Census, Ministry of Economic Affairs & Development, Nouakchott, Mauritania, 1995.	CEN95	1995	22.4		35.6		6.0		38.5	
Multiple Indicator Cluster Survey, Mauritania 1996.	MICS96	1996	22.4		37.9		6.6		48.5	
Global Water Supply and Sanitation Assessment 2000. Water Supply and Sanitation Sector Questionnaire - 1999. (Form 6 sent to WHO)	JMP99	1999				86.0				41.0
Mauritanie, Enquête démographique et de santé, 2001.	DHS01	2001	28.1		59.1		10.6		45.1	
World Health Survey, WHO, 2003.	WHS03	2003		32.4		70.0		11.1		64.6
Enquête sur la Mortalité Infantile et le Paludisme, EMIP 2003-2004	EMIP04	2004	31.7		54.2		12.5		42.3	

Mauritania - urban - Access to improved drinking water sources



Total improved access

Household connections (HC)

◆ Used for estimates

■ Used for estimates

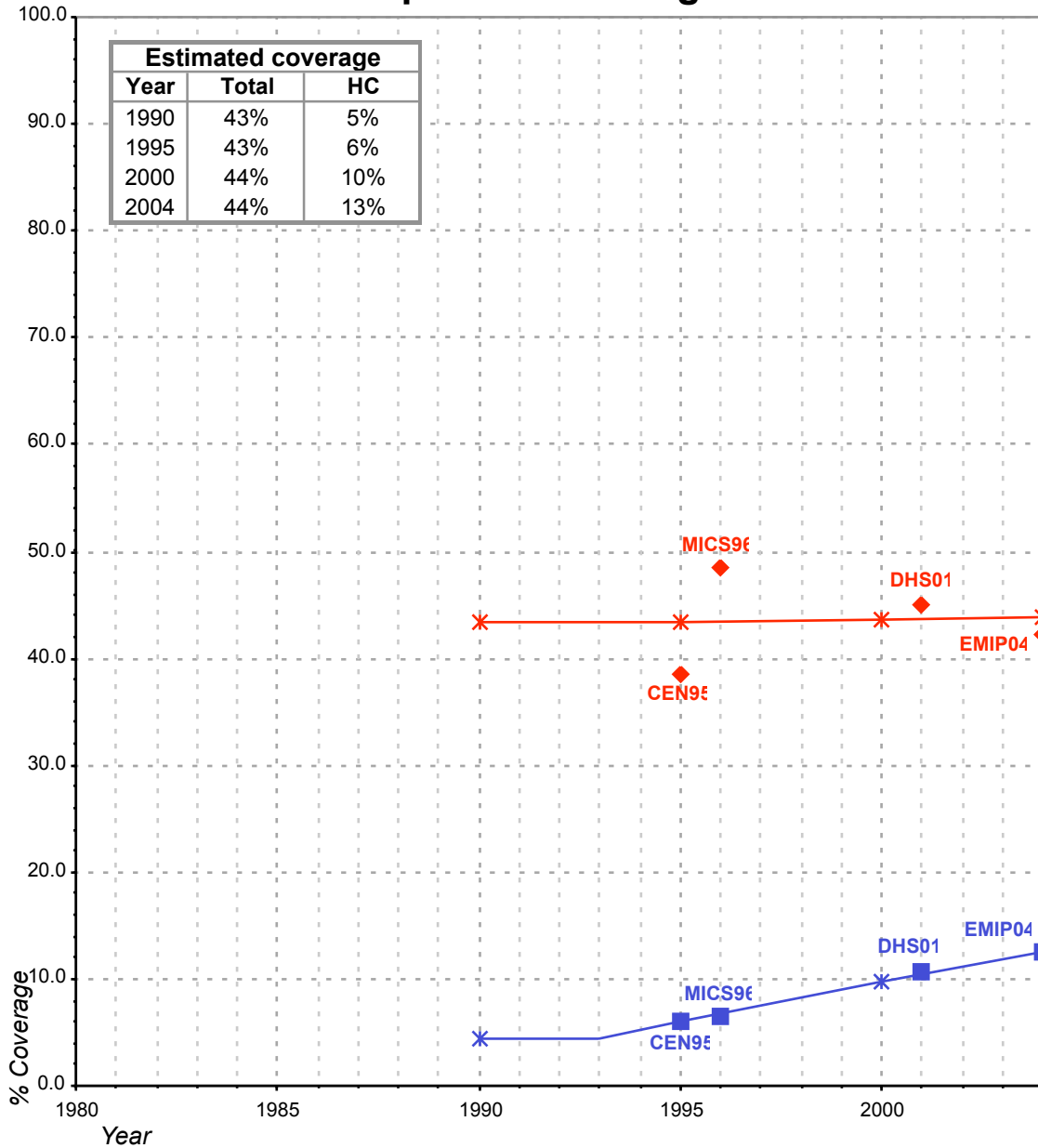
✱ Estimates

✱ Estimates

Total access :

Household connections :

Mauritania - rural - Access to improved drinking water sources



Total improved access

- ◆ Used for estimates
- ✱ Estimates

Household connections (HC)

- Used for estimates
- ✱ Estimates

Total access :
Household connections :