



WHO / UNICEF

**Joint Monitoring Programme
for Water Supply and Sanitation**

Coverage Estimates
Improved Sanitation

Updated in June 2006

Nicaragua

Urban and Rural Sanitation - Nicaragua

Survey

DHS		1992	
SANITATION	Urban	Rural	
Toilet	34,3	2,9	
Latrine	62,2	54,3	
No facility	3,5	42,8	
TOTAL	100	100	
Estimation of improved toilets, based on LSMS93	31,3	2,7	
Estimation of improved latrines, based on LSMS94	6,9	1,0	
50% of remaining private latrine considered improved	22,4	22,3	
Access to improved sanitation	61%	26%	
% Private House connections	29%	1%	

Source: Domestic and Household Survey, Nicaragua, 1992.

1993		
Total	Urban	Rural
Inodoro exclusivo, a la red publica	32,8	0,4
Letrina exclusiva, a la red publica	3,3	0,3
Inodoro exclusivo, a pozo septico	1,8	0,2
Inodoro exclusivo, a pozo ciego	3,8	1,0
Letrina exclusiva, a pozo septico	1,3	0,5
Letrina exclusiva, a pozo ciego	1,1	0,2
Inodoro no exclusivo	3,9	0,2
Inodoro sin connexion	3,0	1,2
Letrina no exclusiva	8,6	8,9
Letrina exclusiva, sin connexion	36,9	46,0
No tiene sanitario	3,4	40,7
TOTAL	100	100
Ratio of "Inodoro exclusivo, a la red publica"	0,72	0,13
Ratio of "Letrina exclusiva, a la red publica"	0,06	0,01
Ratio of improved latrines	0,11	0,02
Ratio of inodoro no exclusivo	0,09	0,07
Ratio of shared latrines	0,17	0,16
50% of "Letrina exclusiva, sin connexion" considered Improved	18,5	23,0
Access to improved sanitation	66%	27%
% Private House connections	36%	1%

Source: LIVING STANDARDS MEASUREMENT STUDY SURVEY, 1993

DHS		1998	
SANITATION	Urban	Rural	
Descarga a aguas negras	37,2	0,9	
Descarga a foso septico	1,4	1,1	
Descarga en sumidero	2,8	0,5	
Fozo con ventilacion	2,5	3,7	
Fozo sin ventilacion	51,8	61,8	
No tiene	3,3	29,8	
Otro	0,6	2	
No info.	0,3	0,2	
TOTAL	100	100	
Ratio "Descargua a aguas negras"	0,90	0,36	
Descarga a foso septico et semiduro corrected for share, based on LSMS98	3,6	1,3	
Latrines corrected for shared, among which 50% are considered improved	21,6	25,1	
Fozo con ventilacion corrected for shared, based on LSMS98	2,1	3,0	
Access to improved sanitation	59%	30%	
% Private House connections	31%	1%	

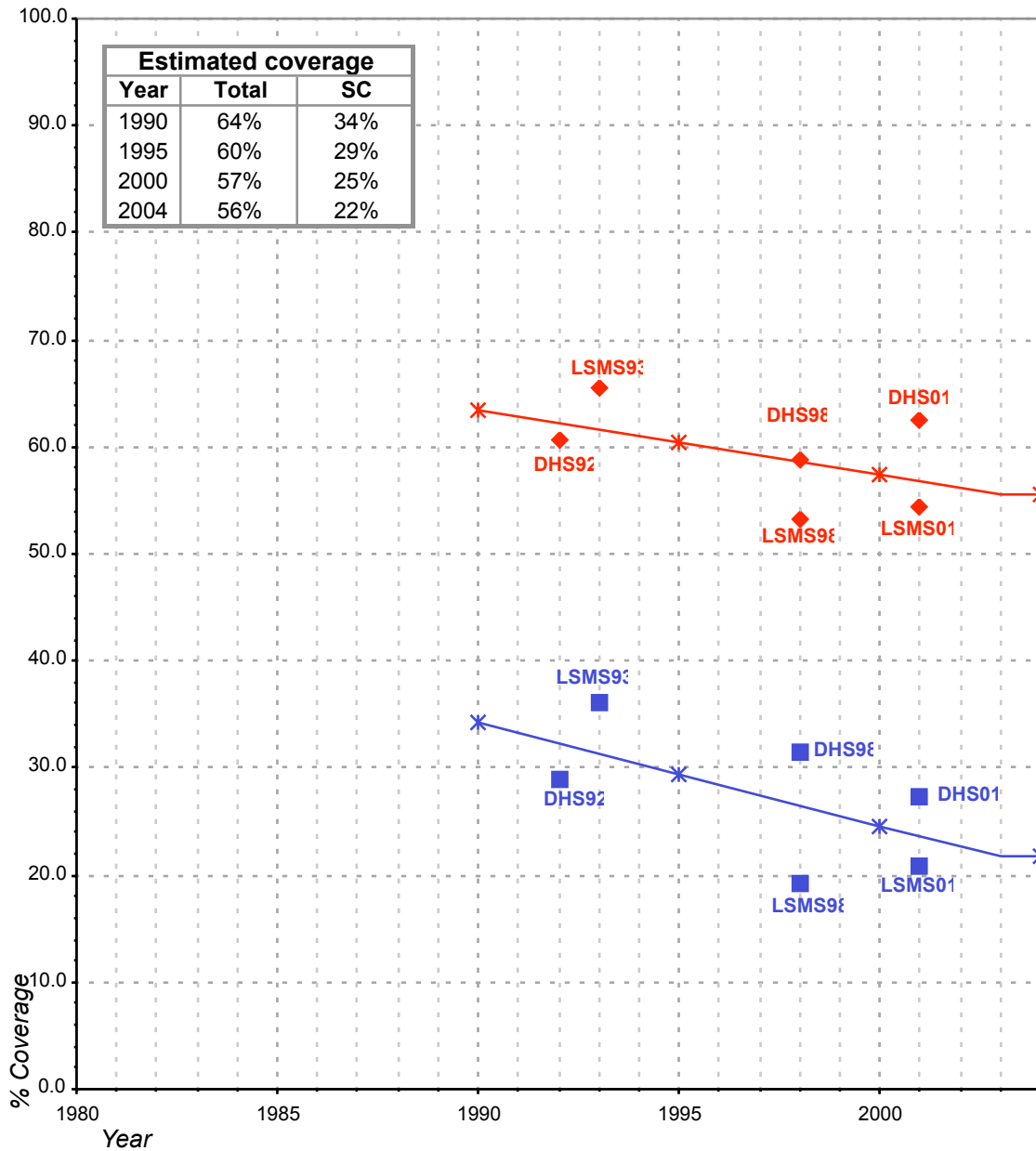
Source: Domestic and Household Survey, Nicaragua, 1998.

LSMS		1998	
SANITATION	Urban	Rural	
Private toilet connected to sewage pipe	19,3	0,2	
Private toilet connected to septic well	8,1	0,9	
Private latrine	51,6	50,7	
Shared latrine	10,4	11,8	
Shared toilet connected to sewage pipe	3,5	0,0	
Shared toilet connected to septic well	1,3	0,2	
To flow into a river	0,1	0,0	
None	5,7	36,2	
TOTAL	100	100	
Ratio of private HC	0,85	1,00	
Ratio of private toilet connected to septic well	0,86	0,82	
Ratio of private latrine	0,83	0,81	
50% of Pit considered Improved	25,8	25,4	
Access to improved sanitation	53%	26%	
% Private House connections	19%	0%	

Source: LIVING STANDARDS MEASUREMENT STUDY SURVEY, 1998

Nicaragua			SANITATION							
			URBAN				RURAL			
			HC		Total		HC		Total	
Source	Code	Year	Used for estimates	Not used for estimates	Used for estimates	Not used for estimates	Used for estimates	Not used for estimates	Used for estimates	Not used for estimates
The International Drinking Water Supply and Sanitation Decade. Review of National Baseline Data (as at December 1980). WHO 1984	WHO80	1980		35.0		35.0				
The International Drinking Water Supply and Sanitation Decade. Review of National Progress (as at December 1983). WHO 1986.	WHO83	1983		35.0						
The International Drinking Water Supply and Sanitation Decade. Review of Mid-Decade Progress (as at December 1985). WHO 1987.	WHO85	1985		35.0						
The International Drinking Water Supply and Sanitation Decade. Review of National Progress (as at December 1988). WHO 1990.	WHO88	1987		32.0						
The International Drinking Water Supply and Sanitation Decade. End of Decade Review (as at December 1990). WHO1992.	WHO90	1990		30.0						
Water Supply and Sanitation Sector Monitoring Report 1993 (Sector Status as of 31 December 1991)	JMP93	1991				78.0				78.0
Domestic and Household Survey, Nicaragua, 1992.	DHS92	1992	28.8		60.7		0.7		26.0	
Water Supply and Sanitation Sector Monitoring Report - 1996. Sector Status as of 31 December 1994. WHO/UNICEF 1996.	JMP96	1993				34.0				27.0
Living Standard Measurement Survey, 1993	LSMS93	1993	36.1		65.6		0.7		26.8	
Domestic and Household Survey, Nicaragua, 1998.	DHS98	1998	31.5		58.8		0.9		30.3	
Living Standard Measurement Survey, 1998	LSMS98	1998	19.3		53.2		0.2		26.5	
Global Water Supply and Sanitation Assessment 2000. Water Supply and Sanitation Sector Questionnaire - 1999. (Form 6 sent to WHO)	JMP99	1998		32.3		93.0		0.0		56.0
Nicaragua Demographic and Health Survey 2001.	DHS01	2001	27.4		62.4		0.1		37.0	
Living Standard Measurement Survey, 2001	LSMS01	2001	20.9		54.4		0.2		30.9	

Nicaragua - urban - Access to improved sanitation coverage



Total improved access

◆ Used for estimates

✱ Estimates

Sewerage connections (SC)

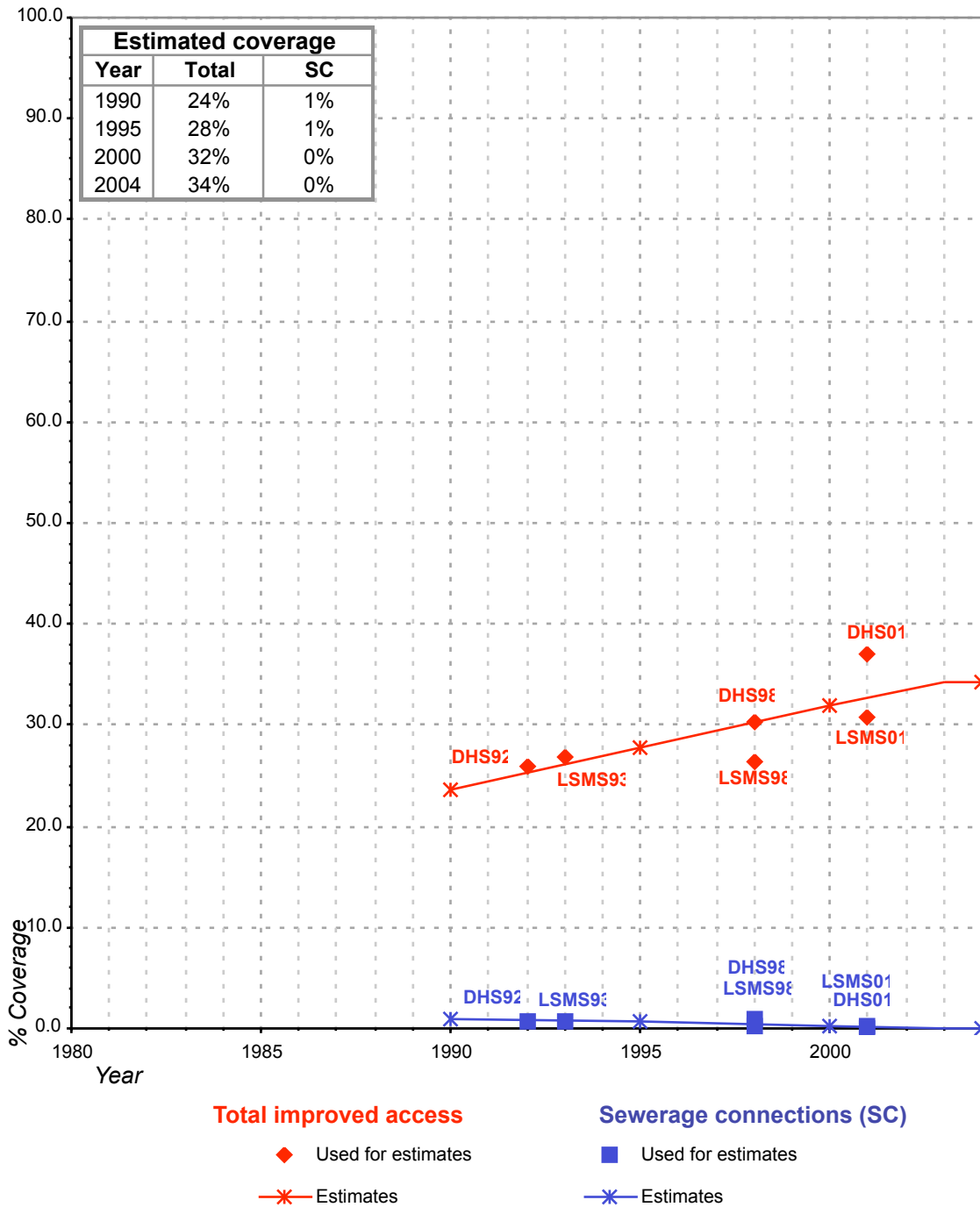
■ Used for estimates

✱ Estimates

Total access :

Sewerage connections :

Nicaragua - rural - Access to improved sanitation coverage



Total access :
Sewerage connections :