



WHO / UNICEF

**Joint Monitoring Programme
for Water Supply and Sanitation**

Coverage Estimates
Improved Sanitation

Updated in June 2006

Peru

Urban and Rural Sanitation - Peru

Survey

ESN 1986			
SANITATION	Urban*	Rural	Total
Servicio publico	70,7	6,1	40,8
Tanque septico	2,3	0,9	1,7
Pozo septico	8,8	6,3	7,6
No tiene	18,2	86,6	49,9
Access to improved sanitation	82%	13%	50%
Estimation of private facilities based on	72,9	11,7	
TOTAL	100,0	100,0	100,0
Access to improved private sanitation	73%	12%	

Source: Encuesta sobre niveles de vida y sector informal en el Peru, Primeros Resultados, 1986 Peru

* combination of capitol + other urban, assuming sample size was proportional to population

DHS 1986		
SANITATION	Urban	Rural
Domestic connection to system	59,1	2,1
Water closet (Excusado)	4,5	1,0
Pour-flush (Botadero)	4,0	0,8
Blind well (soakaway)	2,5	2,8
"Turkish chair" (Silla turca)	0,6	0,0
Other	1,5	0,4
No facility	27,5	92,9
Missing Information	0,4	0,0
Access to improved sanitation	0,7	0,1
Estimation of private facilities based on DHS92	62,9	5,9
TOTAL	100	100
Access to improved private sanitation	63%	6%
Estimation of private House connections	52%	2%

Source: DHS I, Peru, 1986

DHS 1992		
SANITATION	Urban	Rural
Private toilet	58,5	3,1
Shared toilet	5	0,2
Pour-flush (private)	4,1	1,1
Pour-flush (shared)	2,1	0,8
Simple pit (private)	10,5	19,6
Simple pit (shared)	1,9	2,5
No facility	9,1	63,4
Other	8,6	9,3
Ratio of private facilities	0,89	0,87
50% of simple pit (private) considered improved	5,3	9,8
Access to improved sanitation	68%	14%
Estimated house connections	56%	4%
TOTAL	101	100

Source: DHS 1991-92, Peru

LSMS 1994		
SANITATION	Urban	Rural
PUBLIC NETWORK CONNECTION INSIDE HOUSE	68,0	2,8
PUBLIC NETWORK CONNECTION OUTSIDE HOUSE	3,7	0,1
SEPTIC TANK	7,8	12,4
PIT LATRINE	10,2	26,5
SEWER OR CANAL	2,2	4,9
NO SANITATION FACILITIES	8,1	53,2
Estimation of private facilities based on DHS96	72,3	25,0
TOTAL	100	100
50% of Pit considered Improved	5,1	13,3
Access to improved sanitation	72%	25%
Estimated private house connections	60%	2%

Source: LIVING STANDARDS MEASUREMENT STUDY SURVEY, Peru, 1994

Urban and Rural Sanitation - Peru

DHS 1996		
SANITATION	Urban	Rural
Private toilet indoors	58,5	2,9
Shared toilet indoors	8,1	0,5
Private toilet outdoors	0,6	0,3
Shared toilet outdoors	2,2	0,4
Simple pit (private)	17,2	29,6
Simple pit (shared)	2,7	3,7
River, irrigation ditch, canal	0,6	0,8
Bush	8,6	61,2
Other	1,9	1
Ratio of private outdoors toilets	0,21	0,43
Ratio of private facilities (toilets and latrines)	0,85	0,88
Ratio of private latrines	0,86	0,89
TOTAL	100	100
Ratio private indoors toilets	0,88	0,85
50% of simple pit (private) considered improved	8,6	14,8
Access to improved sanitation	68%	18%
Estimated house connections	59%	5%

Source: DHS 1996, Peru

ENNIV 1997		
SANITATION	Urban	Rural
Red publica dentro de la vivienda ¹	73,7	9,2
Red publica fuera de la vivienda ²	3,0	0,5
Pozo septico ³	4,5	7,6
Pozo ciego o negro ³	10,6	35,1
Sobre acequia o canal	0,7	2,1
Otro	0,3	0,9
No tiene	7,3	44,6
TOTAL	100	100
1 Private Indoor toilet based on ratio DHS96	64,7	7,8
2 Privat outdoor toilet based on ratio DHS96	0,6	0,2
3 Latrines adjusted for shared proportion on basis of DHS96	9,2	31,2
4 Pozo septico adjusted for shared proportion on basis of	3,8	6,7
50% private latrines	4,6	15,6
Access to improved private sanitation	74%	30%
Estimation of private House connections	65%	8%

Source: Desigualdades en el acceso, uso y gasto con el agua potable en America Latina y el Caribe, Peru, PAHO, Feb 2001, based on ENNIV 1997

Census 1993		
(Population in thousands)		
SANITATION	Urban	Rural
Household connection (inside)	8 330,4	131,6
Household connection (outside)	789,4	31,2
Blind Well (Soakaway)	2 715,7	1 849,1
River, irrigation ditch, canal*	221,8	164,4
No Facility	2 281,3	5 286,7
Total Population Served	11 835,5	2 011,9
Access to improved sanitation	83%	27%
TOTAL	14 338,6	7 463,0
Access to improved private sanitation	68%	23%
Estimation of private House connections	52%	2%

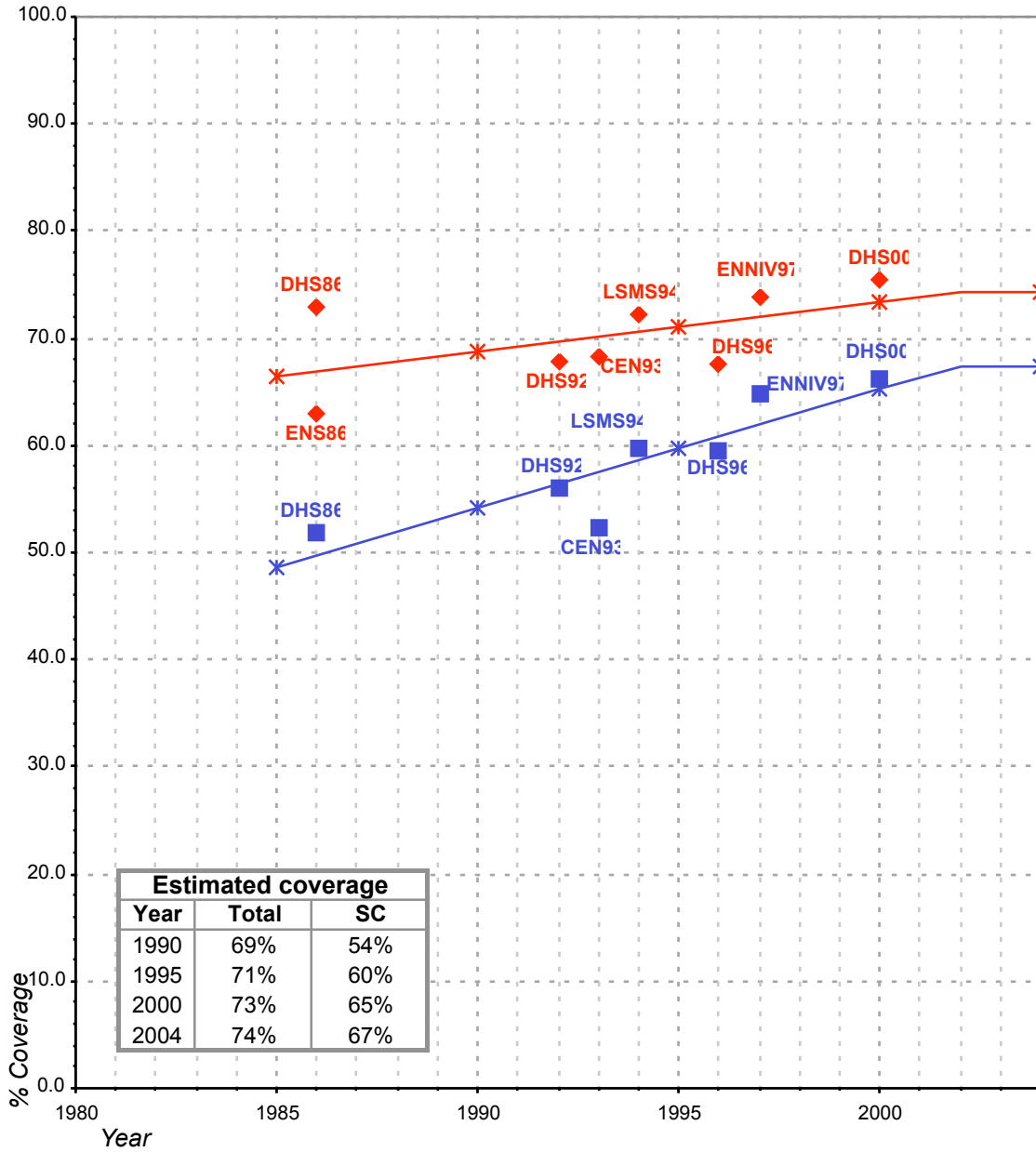
Source: 1993 census as recorded in the Global Water Supply and Sanitation Assessment 2000. Water Supply and Sanitation Sector Questionnaire - 1999

Estimate 1999		
(Population in thousands)		
SANITATION	Urban	Rural
Population served with household connections to conventional sewers	11 369,6	1 708,1
Population without household connections but served with adequate, private or shared on-site system	3 818,2	1 388,0
Total population served	15 187,8	3 096,1
Total population unserved	1 781,8	4 735,0
Total population	16 969,6	7 831,1
Access to improved sanitation	90%	40%
% House connections	67%	22%

Source: Global Water Supply and Sanitation Assessment 2000. Water Supply and Sanitation Sector Questionnaire - 1999 (Form 6 - sent to WHO)

Peru			SANITATION							
			URBAN				RURAL			
			HC		Total		HC		Total	
Source	Code	Year	Used for estimates	Not used for estimates	Used for estimates	Not used for estimates	Used for estimates	Not used for estimates	Used for estimates	Not used for estimates
The International Drinking Water Supply and Sanitation Decade. Review of National Baseline Data (as at December 1980). WHO 1984	WHO80	1980		55.0		57.0				0.0
The International Drinking Water Supply and Sanitation Decade. Review of National Progress (as at December 1983). WHO 1986.	WHO83	1983		55.0		57.0				1.0
The International Drinking Water Supply and Sanitation Decade. Review of Mid-Decade Progress (as at December 1985). WHO 1987.	WHO85	1985		49.0		67.0				12.0
Source: Encuesta sobre niveles de vida y sector informal en el Peru, Primeros Resultados, 1986 Peru	ESN86	1986			72.9				11.7	
Demographic & Health Survey, Peru 1986.	DHS86	1986	51.9		62.9		1.8		5.9	
The International Drinking Water Supply and Sanitation Decade. Review of National Progress (as at December 1988). WHO 1990.	WHO88	1988		55.0		71.0				17.0
The International Drinking Water Supply and Sanitation Decade. End of Decade Review (as at December 1990). WHO1992.	WHO90	1990		68.0		76.0				20.0
Demographic & Health Survey, Peru 1991.	DHS92	1992	56.0		67.9		4.3		14.0	
Water Supply and Sanitation Sector Monitoring Report 1993 (Sector Status as of 31 December 1991)	JMP93	1991				76.0				20.0
1993 census as recorded in the Global Water Supply and Sanitation Assessment 2000. Water Supply and Sanitation Sector Questionnaire - 1999 (Form 4 sent to WHO)	CEN93	1993	52.2		68.4		1.7		23.4	
Water Supply and Sanitation Sector Monitoring Report - 1996. Sector Status as of 31 December 1994. WHO/UNICEF 1996.	JMP96	1994				62.0				10.0
Demographic & Health Survey, Peru 1996.	DHS96	1996	59.4		67.7		4.7		18.0	
Desigualdades en el acceso, uso y gasto con el agua potable en America Latina y el Caribe, Peru, PAHO, Feb 2001, based on ENNIV 1997	ENNIV97	1997	64.7		73.8		7.8		30.3	
Global Water Supply and Sanitation Assessment 2000. Water Supply and Sanitation Sector Questionnaire - 1999. (Form 6 sent to WHO)	JMP99	1998		67.0		90.0		21.8		40.0
Peru Demographic and Health Survey 2000.	DHS00	2000	66.2		75.5		6.6		25.4	
LIVING STANDARDS MEASUREMENT STUDY SURVEY, Peru, 1994	LSMS94	1994	59.7		72.3		2.4		25.0	

Peru - urban - Access to improved sanitation coverage



Estimated coverage		
Year	Total	SC
1990	69%	54%
1995	71%	60%
2000	73%	65%
2004	74%	67%

Total improved access

◆ Used for estimates

✱ Estimates

Sewerage connections (SC)

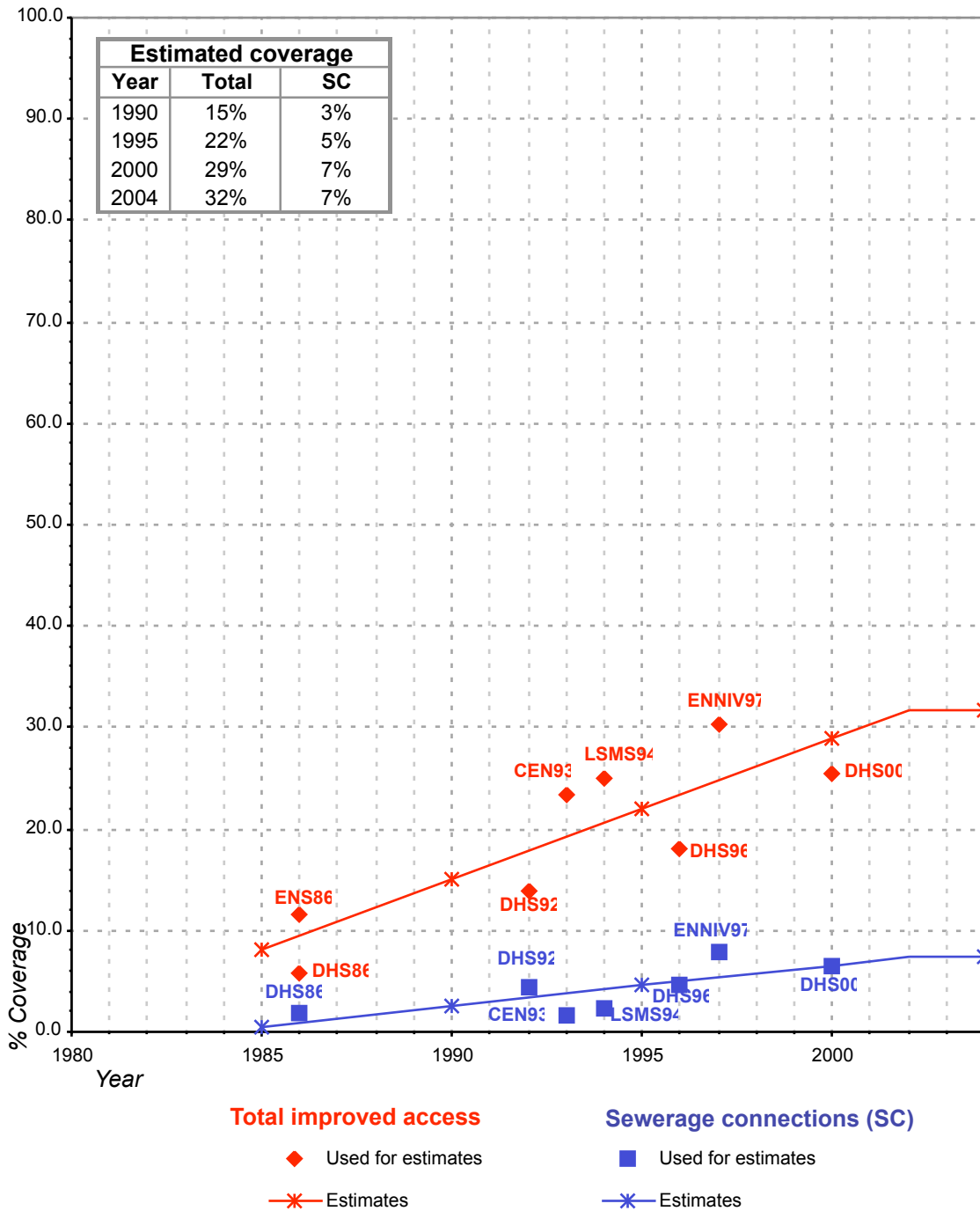
■ Used for estimates

✱ Estimates

Total access :

Sewerage connections :

Peru - rural - Access to improved sanitation coverage



Total access :

Sewerage connections :