



WHO / UNICEF

**Joint Monitoring Programme
for Water Supply and Sanitation**

Coverage Estimates

Improved Drinking Water

Updated in June 2006

Sao Tome & Principe

SAO TOME & PRINCIPE

MICS		2000	
WATER	Urban	Rural	
Piped into dwelling	9.4	2.4	
Piped into yard or plot	24.8	16.3	
Public tap	50.0	39.8	
Tubewell/ borehole with pump	0.8	2.6	
Protected dug well	3.4	11.4	
Protected spring	0.1	0.1	
Unprotected dug well/spring pond,river,stream	2.3	6.4	
Tanker truck vendor	6.2	17.6	
Other	0.1	0.0	
Other	2.9	3.4	
Missing/DK	0.0	0.0	
total	100.0	100.0	
water sources	89%	73%	
% House connections	34%	19%	

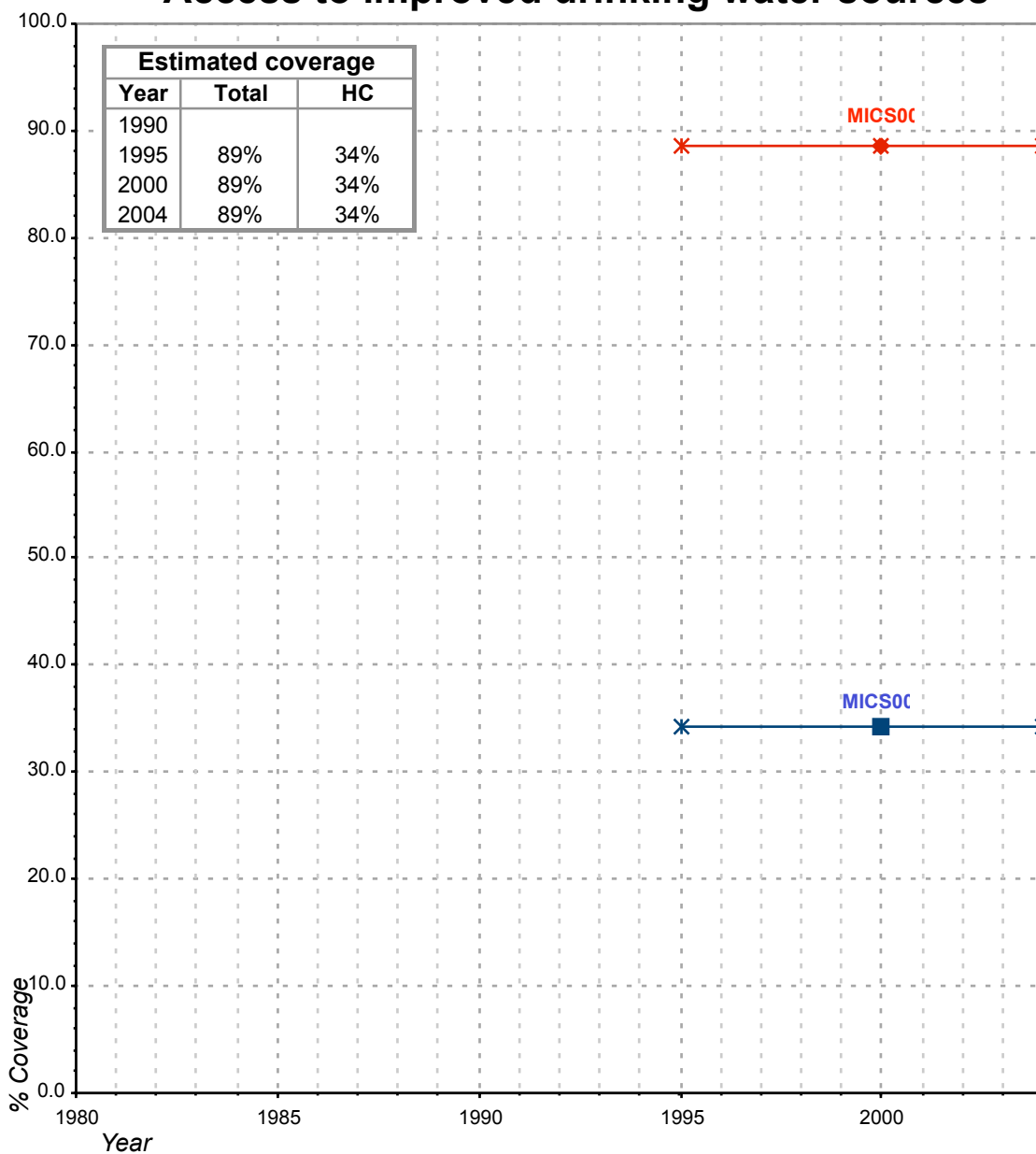
Multiple Indicator Cluster Survey, Final Report, 2000.

ENCV		2000	
WATER		Total	
Piped into dwelling		20.8	
Piece a cote du batiment principal		62.6	
Riviere		7.4	
Other		9.2	
total		100.0	
sources		83%	
% House connections		83%	

Rapport de l'enquete nationale sur les conditions de vie des menages 2000

Sao Tome and Principe			DRINKING WATER							
			URBAN				RURAL			
			HC		Total		HC		Total	
Source	Code	Year	Used for estimates	Not used for estimates	Used for estimates	Not used for estimates	Used for estimates	Not used for estimates	Used for estimates	Not used for estimates
Multiple Indicator Cluster Survey, Final Report, 2000.	MICS00	2000	34.2		88.5		18.7		72.6	

Sao Tome and Principe - urban - Access to improved drinking water sources



Total improved access

◆ Used for estimates

—*— Estimates

Household connections (HC)

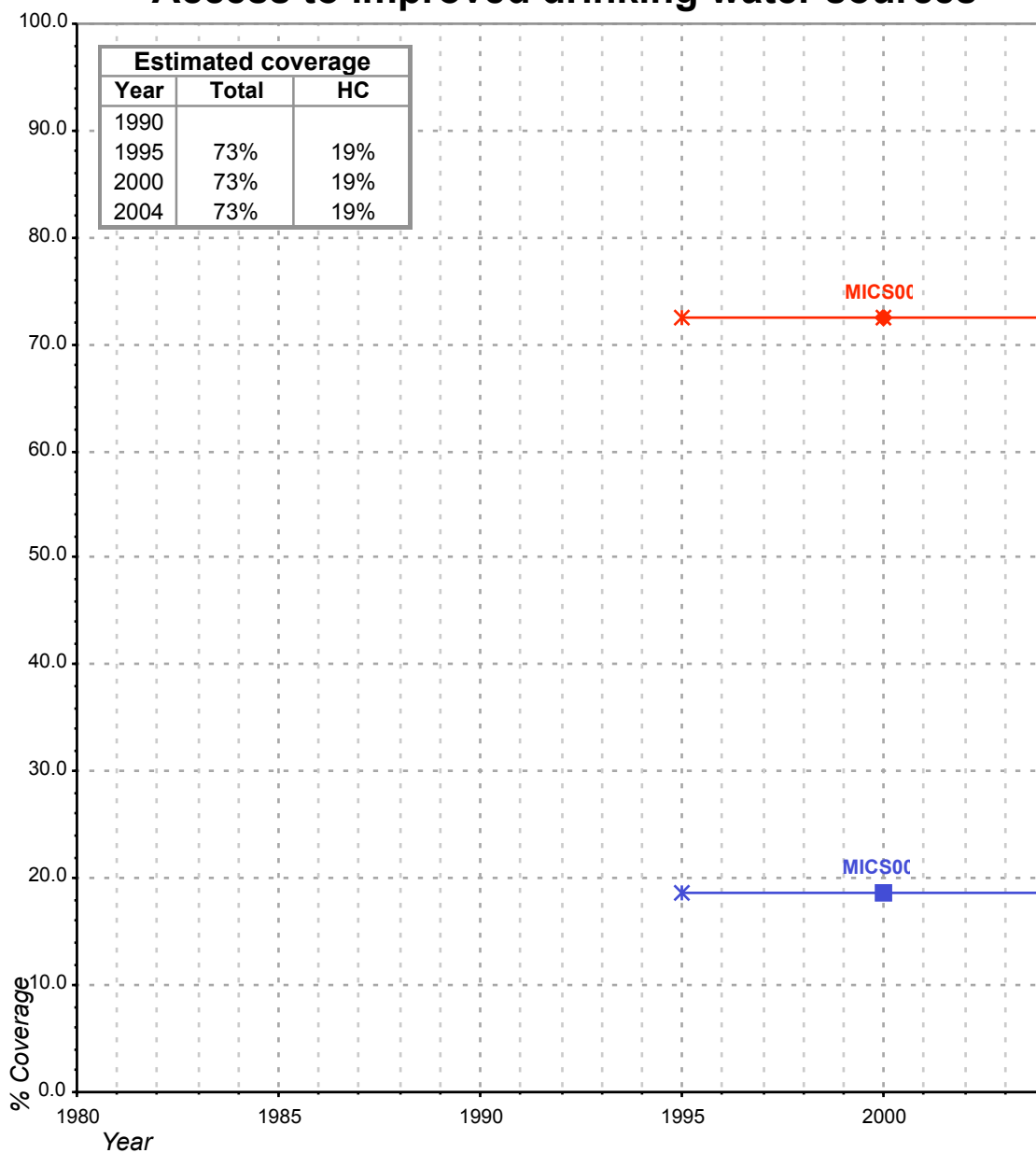
■ Used for estimates

—*— Estimates

Total access :

Household connections :

Sao Tome and Principe - rural - Access to improved drinking water sources



Total improved access

◆ Used for estimates

✱ Estimates

Household connections (HC)

■ Used for estimates

✱ Estimates

Total access :

Household connections :