



WHO / UNICEF

**Joint Monitoring Programme
for Water Supply and Sanitation**

Coverage Estimates
Improved Sanitation

Updated in June 2006

Togo

Urban & Rural Sanitation - Togo

Surveys

DHS 1988		
SANITATION	Urban	Rural
Pour-Flush	14.7	0.0
Sealed Pit	49.4	5.9
Soakaway	6.5	19.4
Nature	21.7	73.6
Other	7.8	1.0
Missing	0.0	0.1
TOTAL	100.0	100.0
sanitation	71%	25%

Source : Demographic and Health Survey, Togo, 1988.

MICS 1996		
SANITATION	Urban	Rural
Septic Tank	22	1
Sealed Pit	38.1	10.1
Covered Latrine	5.9	2.4
Soakaway	9.1	7.2
Uncovered Latrine	2.2	2.4
Pigsty (Porcherie)	0.3	3.5
Nature	22.4	73.4
TOTAL	100	100
sanitation	75%	21%

Source : Multiple Indicators Clusters Survey: MICS-Togo-96

DHS 1998		
SANITATION	Urban	Rural
Covered Latrine	8.3	2.3
Septic Tank	21.5	1.1
Sealed Pit	35.5	13.6
Uncovered Latrine	4.3	3.3
No Facilities/Nature	28.5	76.7
Other	1.5	2.5
Not Defined	0.3	0.4
TOTAL	100	99.9
sanitation	65%	17%

Source : Demographic and Health Survey, Togo, 1998.

MICS 2000		
SANITATION	Urban	Rural
Chasse d'eau ou fosse septique	20.3	0.5
Fosse étanche	42.8	8.1
Latrine couvertes	7.2	2.5
couverte	4	10.7
Autre	0.7	0.6
Pas de toilette/ brousse/ champ	24.8	77.6
NSP	0.3	0
TOTAL	100	100
couvert are estimated to be improved	2	5
Access to improved sanitation	72%	16%

Source : Togo, MICS 2000

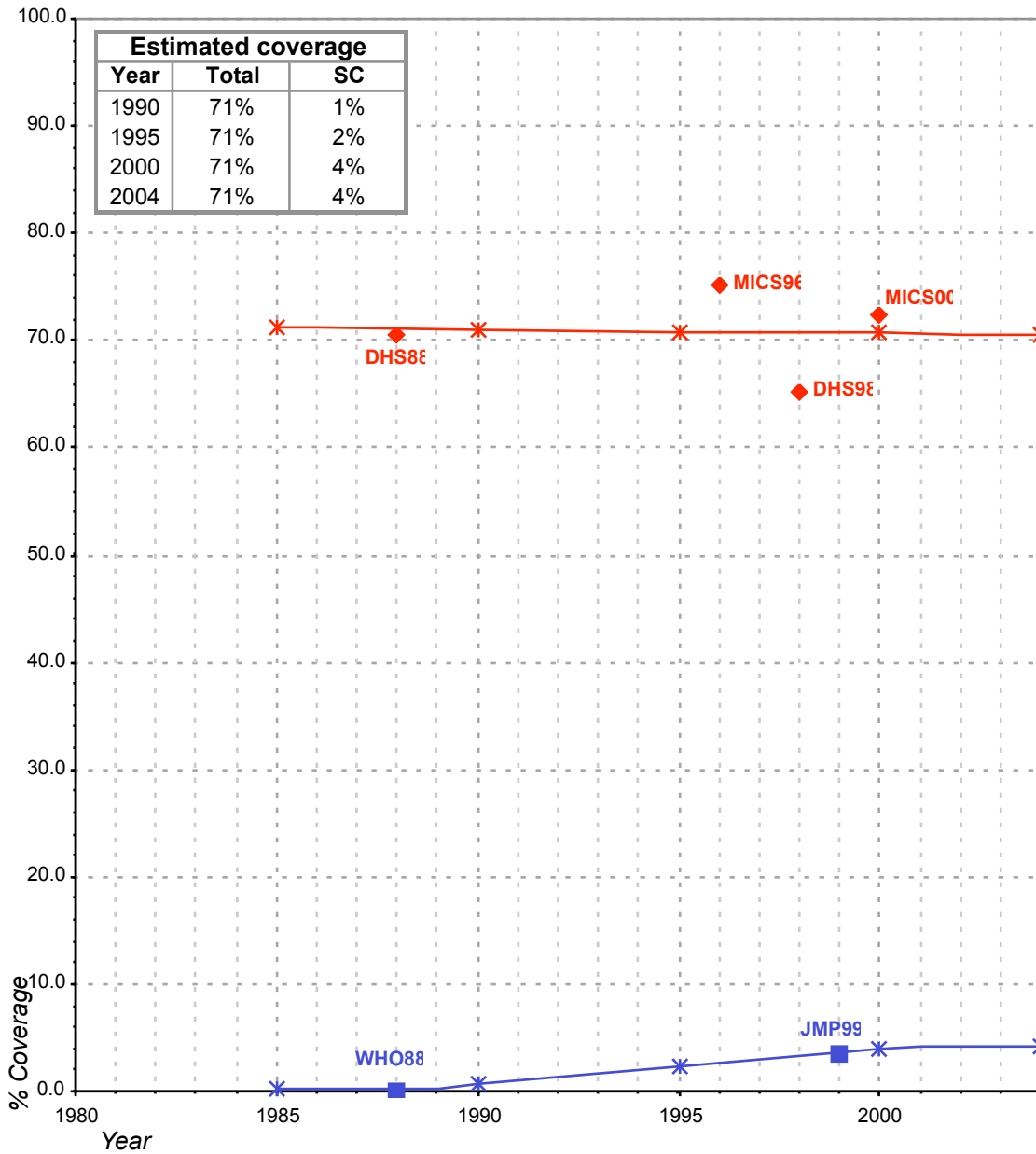
Estimate

FORM6/WHO 1999		
(Population in thousands)		
SANITATION	Urban	Rural
Population served with household connections to conventional sewers	58	0
Population without household connections but served with adequate, private or shared on-site system	1'073	750
Total population served	1'131	750
Total population unserved	505	2'020
Total population	1'636	2'770
Population with adequate sanitation	69%	27%
% House connections	4%	0%

Source: Global Water Supply and Sanitation Assessment 2000. Water Supply and Sanitation Sector Questionnaire - 1999. Form 6 sent to WHO.

Togo			SANITATION							
			URBAN				RURAL			
			HC		Total		HC		Total	
Source	Code	Year	Used for estimates	Not used for estimates	Used for estimates	Not used for estimates	Used for estimates	Not used for estimates	Used for estimates	Not used for estimates
The International Drinking Water Supply and Sanitation Decade. Review of National Baseline Data (as at December 1980). WHO 1984	WHO80	1980		0.0		24.0				10.0
The International Drinking Water Supply and Sanitation Decade. Review of National Progress (as at December 1983). WHO 1986.	WHO83	1983		0.0		24.0				8.0
The International Drinking Water Supply and Sanitation Decade. Review of Mid-Decade Progress (as at December 1985). WHO 1987.	WHO85	1985		0.0		31.0				31.0
Togo Demographic and Health Survey 1988. Published December 1989.	DHS88	1988			70.5				25.3	
The International Drinking Water Supply and Sanitation Decade. Review of National Progress (as at December 1988). WHO 1990.	WHO88	1988	0.0			42.0				16.0
Water Supply and Sanitation Sector Monitoring Report 1993 (Sector Status as of 31 December 1991)	JMP93	1991				56.0				10.0
Water Supply and Sanitation Sector Monitoring Report - 1996. Sector Status as of 31 December 1994. WHO/UNICEF 1996.	JMP96	1994				57.0				13.0
Multiple Indicators Clusters Survey: MICS-Togo-96.	MICS96	1996			75.1				20.7	
Togo Demographic and Health Survey 1998.	DHS98	1998			65.3				17.0	
Global Water Supply and Sanitation Assessment 2000. Water Supply and Sanitation Sector Questionnaire - 1999. (Form 6 sent to WHO)	JMP99	1999	3.5			69.0	0.0			27.0
Togo, MICS 2000	MICS00	2000			72.3				16.5	

Togo - urban - Access to improved sanitation coverage



◆ Total improved access ■ Sewerage connections (SC)
◆ Used for estimates ■ Used for estimates
✱ Estimates ✱ Estimates

Total access :

Sewerage connections :

Togo - rural - Access to improved sanitation coverage

