



WHO / UNICEF

**Joint Monitoring Programme
for Water Supply and Sanitation**

Coverage Estimates

Improved Drinking Water

Updated in June 2006

Thailand

DHS		1987		
Water	Urban	Rural	Total	
Piped into residence	57.9	7.8	16.8	
Bottled water	16.1	0.7	3.5	
Public tap	0.9	0.9	0.9	
Private well/pond	4.7	17.9	15.5	
Public well/pond	2.0	32.1	26.7	
River, spring, surface	0.1	4.0	3.3	
tanker, truck, other vendor	1.8	0.7	0.9	
Rainwater	13.7	26.5	24.2	
Other	0.3	0.5	0.5	
Neighbors' Well/pond	1.5	8.8	7.5	
TOTAL	99	100	100	
all wells	8.2	58.8	49.7	
50% Well	7.5	55.0	24.8	
access to improved drinking water source (incl. 50% Well)	96%	91%		
% House connections	58%	8%	17%	

Provincial Health Survey 2 - 1996			
Water	Urban	Rural	Total
access to improved drinking water source	88%	73%	81%
House connection estimation	72%	10%	

Census 1990		
Water	Urban	Rural
Rainwater collection	1'198	15'630
Private household connection	8'295	6'158
Communal protected well	659	21'086
Surface sources: streams, ponds, etc.	63	1'459
TOTAL	10'215	44'333
Ratio of protected wells and ponds	0.91	0.94
access to improved drinking water source	10152	42874
access to improved drinking water source	99%	97%
% House connections	81%	14%

Census 2000		
Water	Urban	Rural
Safe water supplies (*)	58.1	89.3
Bottled water (**)	39.8	9.2
access to improved drinking water source (*)	98%	99%
House connection estimation, based on CEN90	80%	14%

FORM-6/WHO 1999		
Sanitation	Urban	Rural
Population served with household connection	14'929	639
Population without household connection but with reasonable access to a public water point	4'224	37'385
total population served	19'153	38'024
Total population unserved	375	4'200
Total population	19'528	42'224
Population with access to improved drinking water source	98%	90%
% House connections	76%	2%

Census 2000, Department of Health, Ministry of Public Health

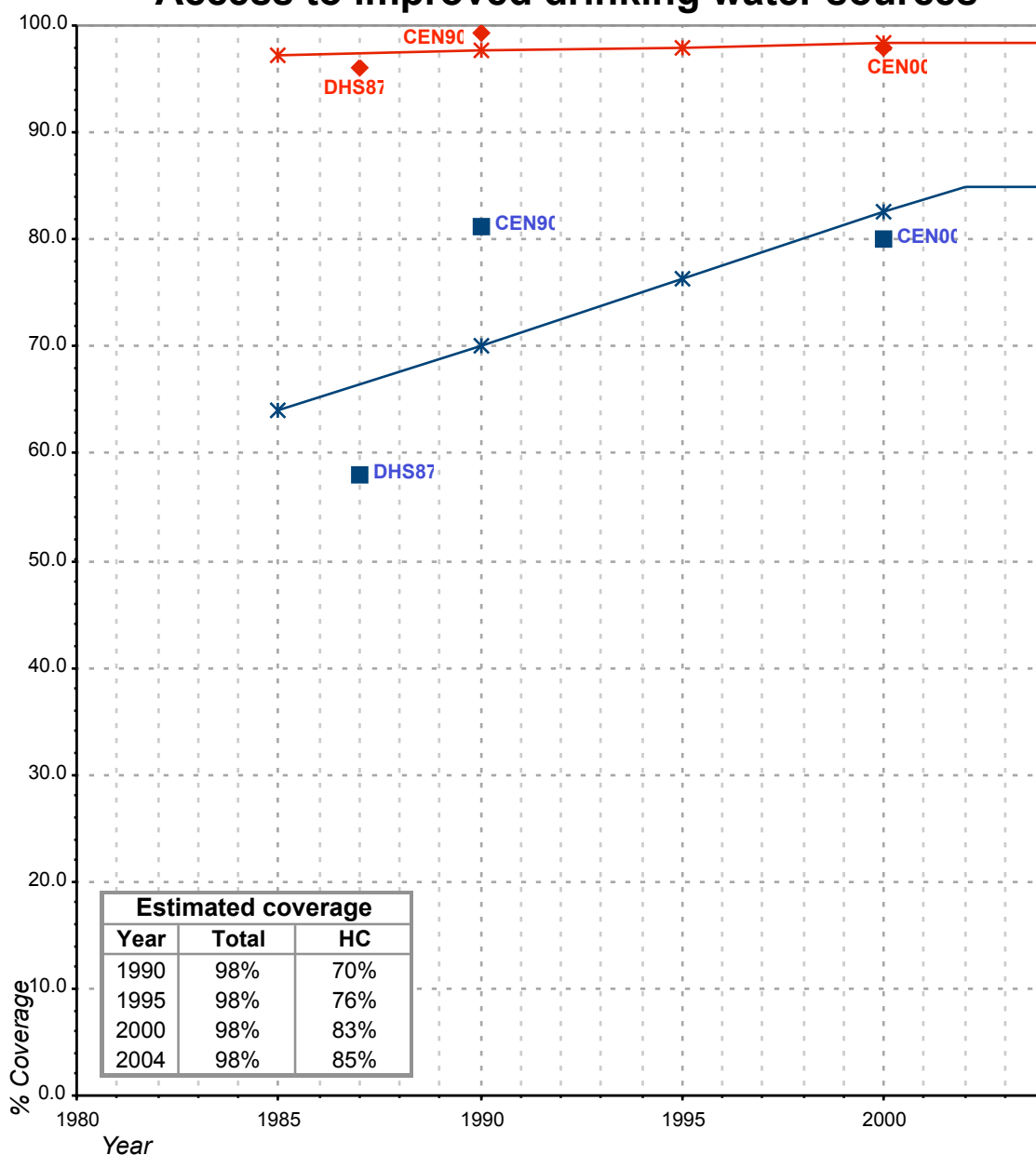
(*) Access from waterworks systems, artesian wells, sanitary shallow wells, rainwater.
 (**) Bottled water is also considered improved as much of the population drinks bottled water, even though piped water is available.

NOTE: No disaggregation of facilities.

..\\..\\Tables\\Divers\\Thailand\\Water Supply and Sanitation.pdf

Thailand			DRINKING WATER							
			URBAN				RURAL			
			HC		Total		HC		Total	
Source	Code	Year	Used for estimates	Not used for estimates	Used for estimates	Not used for estimates	Used for estimates	Not used for estimates	Used for estimates	Not used for estimates
The International Drinking Water Supply and Sanitation Decade. Review of National Baseline Data (as at December 1980). WHO 1984	WHO80	1980				65.0				63.0
The International Drinking Water Supply and Sanitation Decade. Review of National Progress (as at December 1983). WHO 1986.	WHO83	1983				50.0				70.0
The International Drinking Water Supply and Sanitation Decade. Review of Mid-Decade Progress (as at December 1985). WHO 1987.	WHO85	1985				56.0				66.0
Thailand Demographic and Health Survey 1987.	DHS87	1987	57.9		96.1		7.8		90.8	
The International Drinking Water Supply and Sanitation Decade. Review of National Progress (as at December 1988). WHO 1990.	WHO88	1988				67.0				76.0
The International Drinking Water Supply and Sanitation Decade. End of Decade Review (as at December 1990). WHO1992.	WHO90	1990								85.0
1990 Census as recorded in the Global Water Supply and Sanitation Assessment 2000. Water Supply and Sanitation Sector Questionnaire - 1999.	CEN90	1990	81.2		99.4		13.9		96.7	
Water Supply and Sanitation Sector Monitoring Report 1993 (Sector Status as of 31 December 1991)	JMP93	1991				89.0				72.0
Provincial Health Survey - 1995	PHS95	1995				94.0				88.0
Provincial Health Survey 2 - 1996	PHS96	1996				73.0				81.0
Global Water Supply and Sanitation Assessment 2000. Water Supply and Sanitation Sector Q	JMP99	1999		76.4		98.0		1.5		90.0
Population and housing census 2000, National Statistical Office.	CEN00	2000	80.0		97.9		14.1		98.5	

Thailand - urban - Access to improved drinking water sources



Total improved access

◆ Used for estimates

✱ Estimates

Household connections (HC)

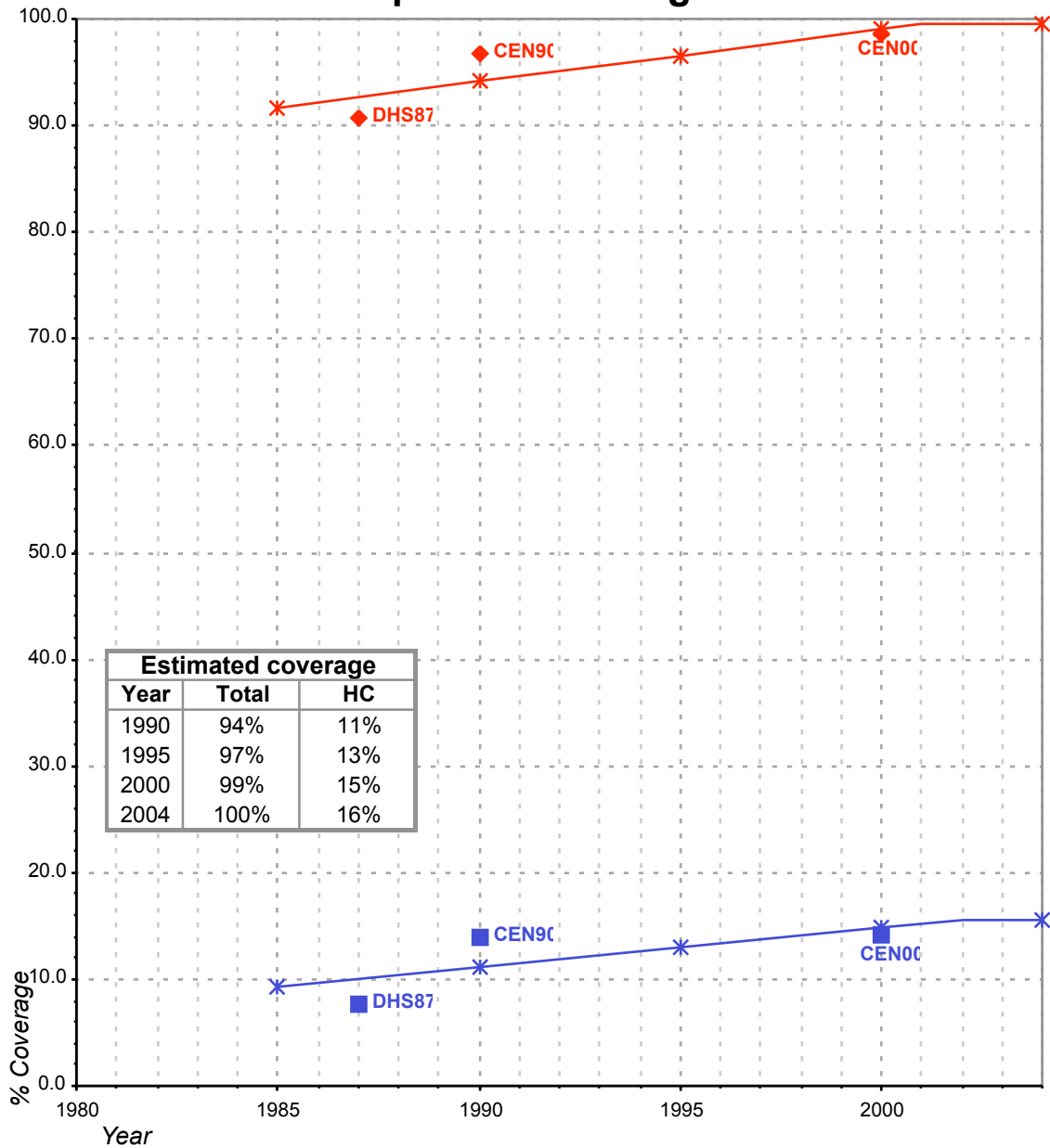
■ Used for estimates

✱ Estimates

Total access : Bottled water is also considered improved as much of the population drinks bottled though piped water is available.

Household connections :

Thailand - rural - Access to improved drinking water sources



Total improved access

◆ Used for estimates

✱ Estimates

Household connections (HC)

■ Used for estimates

✱ Estimates

Total access : Bottled water is also considered improved as much of the population drinks bottled though piped water is available.

Household connections :